
ePS Metrix 22.2

What's New



Copyright © 2004 - 2022 by eProductivity Software. All Rights Reserved.

 Metrix | What's New

November 2022 | Metrix 22.2

Document Version 1

This publication is protected by copyright, and all rights are reserved. No part of it may be reproduced or transmitted in any form or by any means for any purpose without express prior written consent from eProductivity Software. Information in this document is subject to change without notice and does not represent a commitment on the part of eProductivity Software.

Trademarks

Auto-Count, Digital StoreFront, DirectSmile, DSFdesign Studio, PrintFlow, PrintSmith, PrintSmith Site, Printstream, Radius, are trademarks of EPS US, LLC and/or its wholly owned subsidiaries or affiliates in the U.S. and/or certain other countries.

All other terms and product names may be trademarks or registered trademarks of their respective owners and are hereby acknowledged.

Table of Contents

Introduction	4
Contact Information	4
What's New in Metrix 22.2	5
About This Guide.....	5
Requirements.....	5
Additional Sources.....	5
New Features	5
Stock Information in CSV reports.....	5
Maximum Products per Layout.....	5
Allowed Overs as a Percentage Threshold	6
New User Preferences	6
Select All Option for Products	7
Layout Sort Orders.....	7
Auto Plan Option for Advanced Calculations for Irregular Shapes.....	8
Cumulative Number of Sheets and Material Costs	8
Contour Perimeter Length.....	8
Auto Plan Each Time Out (seconds)	9
Press Definition Settings to Always Center Layouts	9
No Limitation on Bleeds	10
Adding Marks Sets in Memory-only Mode.....	10
Shingling Overrides in Export Dialog	10

Introduction

ePS Metrix is an industry-leading job planning engine that transforms big data into actionable data in the most proven end-to-end integrated solution with a holistic view into manufacturing. With over 1,200 Metrix users in 25 countries and 18 years of continuous, aggressive development, Metrix is recognized as the de facto industry standard for dynamic, intelligent production planning, and automated imposition. Metrix 22.2 introduces new features and enhancements and addresses issues found in previous releases.

Contact Information

ePS Support	
Web Site:	https://communities.efi.com
US Phone:	1.855.334.4HLP (1.855.334.4457)
UK Phone:	+44 (0) 800.783.2737
EU Phone:	+49.2102.745.4500
E-Mail:	metrix.support@efi.com

Metrix Support hours are 8:00 am to 5:00 pm Eastern Standard Time (Eastern Daylight Time during summer), Monday – Friday. You may contact support at the above numbers or via our customer portal at communities.efi.com.

Regular European Service Desk hours are 9:00 am to 5:15 pm Greenwich Mean Time (British Summer Time during summer), Monday – Friday.

Note For problems involving infrastructure (i.e., computers, networks, operating systems, backup software, printers, third-party software, etc.), contact the appropriate vendor. ePS cannot support these types of issues.

What's New in Metrix 22.2

About This Guide

This guide introduces you to the new features and enhancements added to Metrix since the release of version 21.2. For more information, see the [ePS Metrix 22.2 User Guide](#).

Requirements

Metrix 22.2

Additional Sources

[ePS Metrix 22.2 User Guide](#)

[ePS Metrix Tech Note: Metrix 22.2 MXML Changes](#)

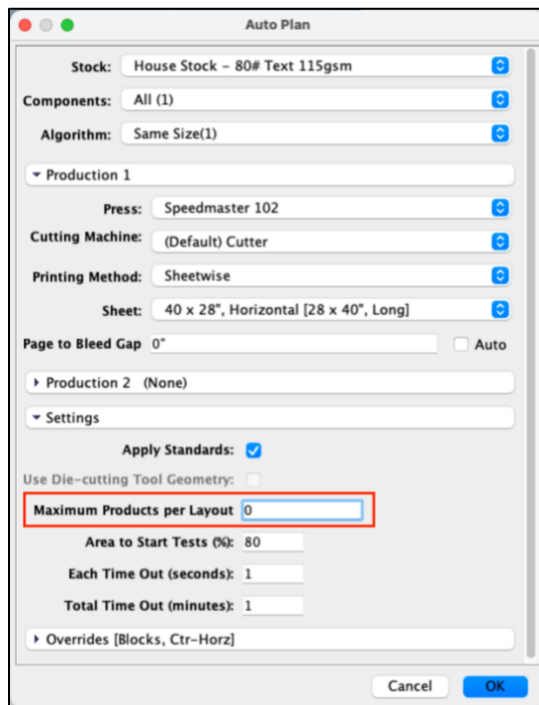
New Features

Stock Information in CSV reports

Layout stock information is now included in exported CSV reports, including stock name, weight, grain direction, sheet width and height, and number of sheets used.

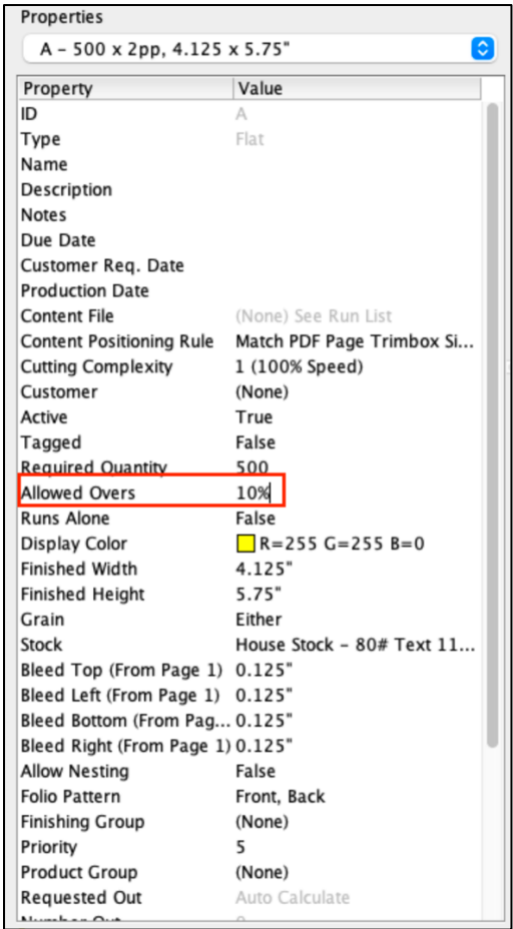
Maximum Products per Layout

There is a new setting, **Maximum Products per Layout**, in the Auto Plan dialog that allows you to specify the maximum number of unique products to be planned on each layout when using the Same Size algorithm. The MXML command is SameSizeLimit=n. Zero (0) is the default setting and sets no limit.



Allowed Overs as a Percentage Threshold

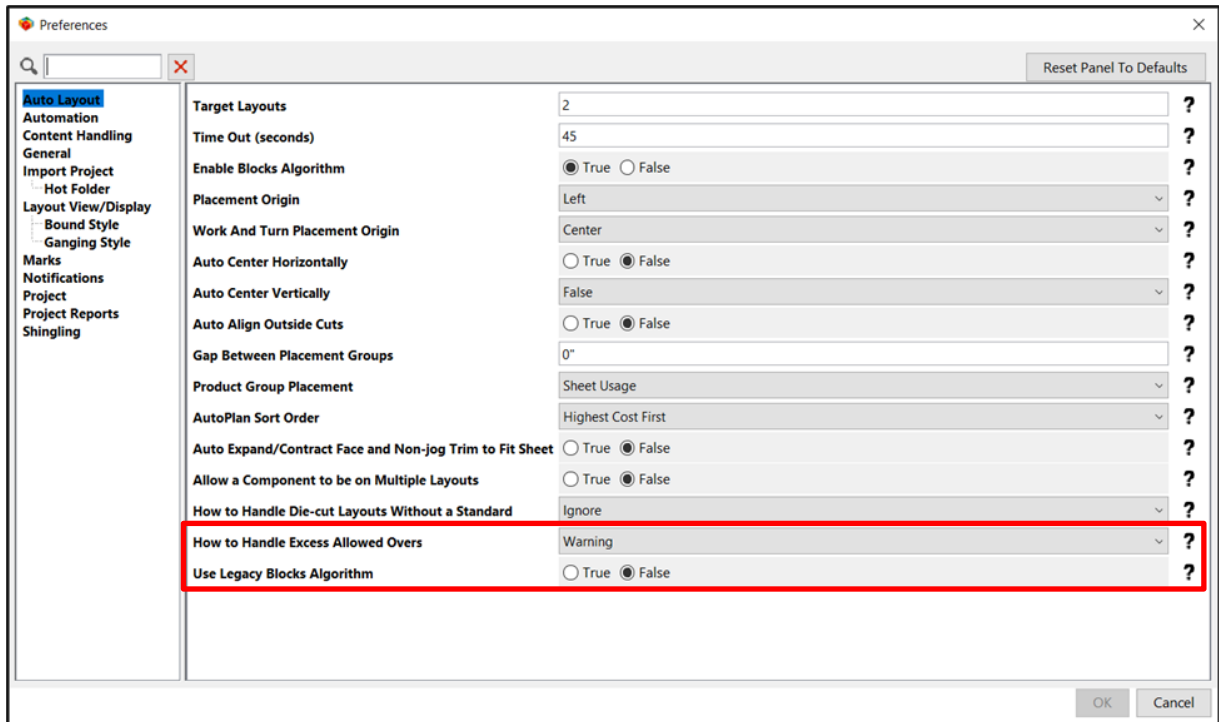
You can now specify Allowed Overs as a percentage of the Required Quantity by adding a percent symbol (%) after the number entered in the Allowed Overs product property field.



New User Preferences

There are two new options in **User Preferences > Auto Layout**.

- **How to Handle Excess Allowed Overs:** This setting determines how Metrix handles situations where more overs will be produced than the total specified for the **Required Quantity** plus **Allowed Overs**. This preference can be set to **Error**, **Warning**, or **Ignore**. When set to **Error** or **Warning**, a status message appears that says: "Rule: Produce requested quantity plus Allowed Overs."
- **Use Legacy Blocks Algorithm:** The Blocks algorithm has been updated to create more efficient layouts when planning projects on variable-length roll-fed presses. The default setting is **False**. When set to **True**, Metrix uses the earlier version of the Blocks algorithm, which sometimes creates layouts where the component instances do not fill the sheet horizontally, resulting in wasted substrate material.



Select All Option for Products

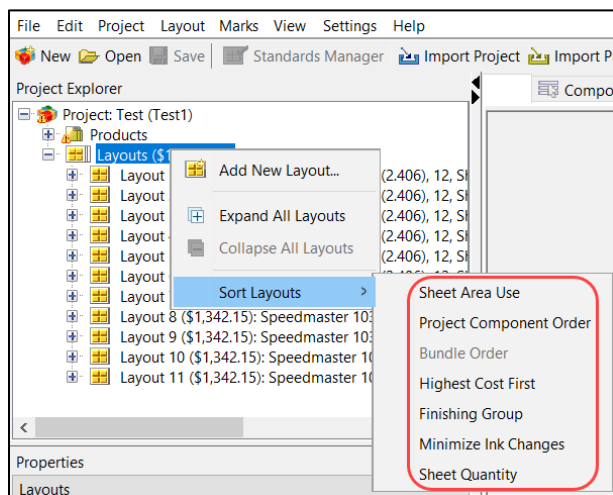
You can now right-click on the parent Products node and choose Select All. This option selects all products in the project so you can edit some of the settings simultaneously.

Layout Sort Orders

There are two new options in the Auto Plan dialog for specifying the **Layout Sort Order**.

- **Minimize Ink Changes:** When this is selected, the Auto Plan results are sorted so that there will be the fewest number of ink changes required.
- **Sheet Quantity:** When this is selected, the layouts are sorted by the number of sheets required, from highest to lowest.

You can now have a different sort order for layouts on a per-project basis. In Project Explorer, right-click on the parent Layouts node and select Sort Layouts. A contextual menu appears:



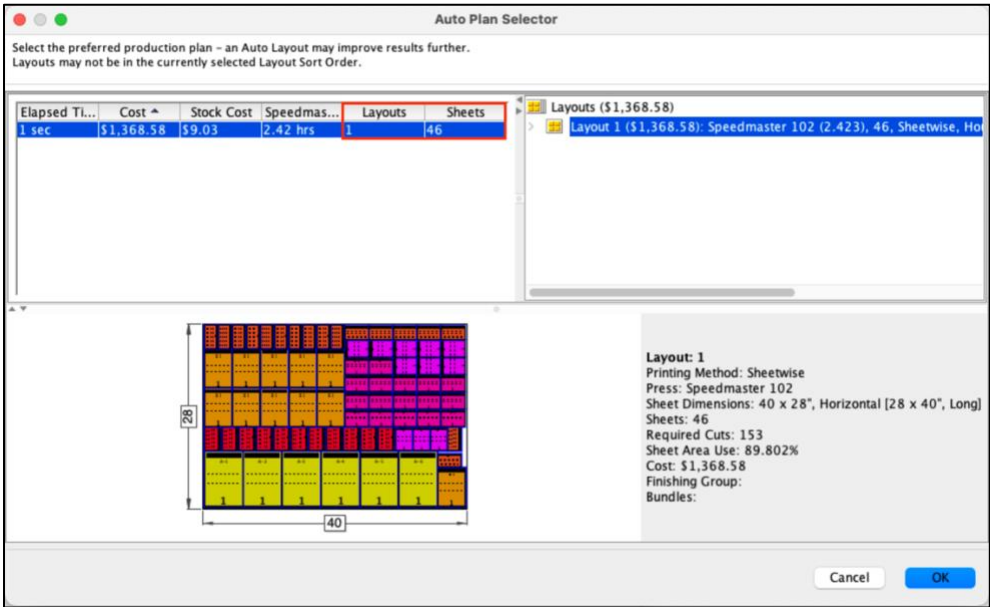
Auto Plan Option for Advanced Calculations for Irregular Shapes

There is a new setting, **Advanced Calculations for Irregular Shapes**, in the Auto Plan dialog. Selecting this allows Metrix to try additional options to create more efficient layouts for some irregular shape products and die-cut products that do not use a die-cutting tool. Using this setting requires additional time and does not guarantee better results. While this option can be used with rectangular products, there is no benefit to doing so. Improvements are most often seen with larger die-cut and irregular shape products.

When this option is selected, a message appears at the bottom of the Auto Plan dialog that says: “The Advanced Calculations option requires additional time.”

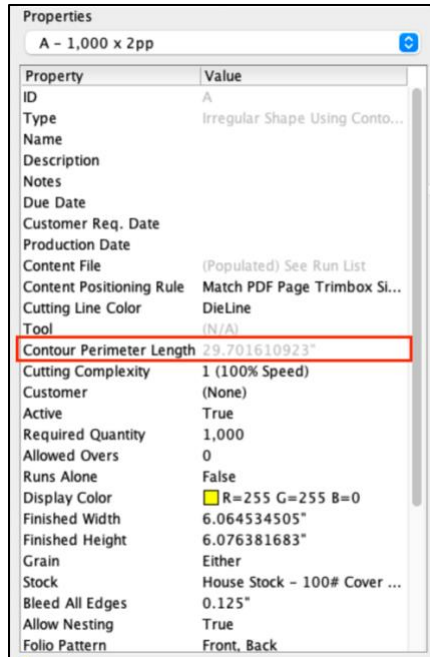
Cumulative Number of Sheets and Material Costs

The Auto Plan Selector dialog now displays the stock costs and number of sheets required for each layout.



Contour Perimeter Length

A new Product property, **Contour Perimeter Length**, displays the total length of the cutting line for die-cut and irregular shape products.



Property	Value
ID	A
Type	Irregular Shape Using Conto...
Name	
Description	
Notes	
Due Date	
Customer Req. Date	
Production Date	
Content File	(Populated) See Run List
Content Positioning Rule	Match PDF Page Trimbox Sl...
Cutting Line Color	DieLine
Tool	(N/A)
Contour Perimeter Length	29.701610923"
Cutting Complexity	1 (100% Speed)
Customer	(None)
Active	True
Required Quantity	1,000
Allowed Overs	0
Runs Alone	False
Display Color	■ R=255 G=255 B=0
Finished Width	6.064534505"
Finished Height	6.076381683"
Grain	Either
Stock	House Stock ~ 100# Cover ...
Bleed All Edges	0.125"
Allow Nesting	True
Folio Pattern	Front, Back

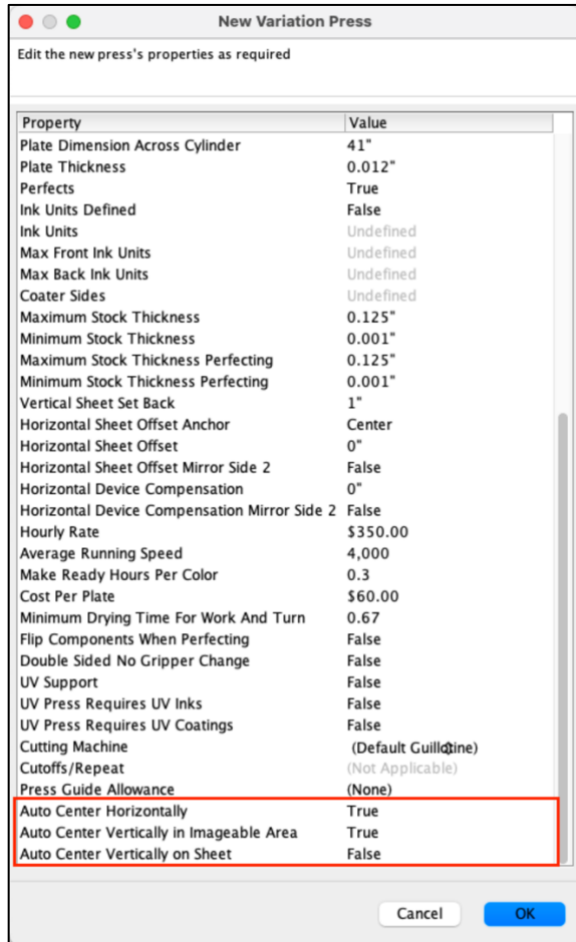
Auto Plan Each Time Out (seconds)

You can now define the **Each Time Out (seconds)** setting in the Auto Plan dialog in tenths of seconds. To enable this feature:

1. With Metrix not running, use a text editor to open the file "Metrix 2022.2.Properties" located in the Users directory.
2. Add the following line and then save the file before starting Metrix:
autoPlan.tenths=true

Press Definition Settings to Always Center Layouts

There are three new press definition settings: **Auto Center Horizontally**, **Auto Center Vertically on Sheet**, and **Auto Center Vertically in Imageable Area**. When **Auto Center Horizontally** is selected, all layouts are centered horizontally on the sheet; **Auto Center Vertically** allows you to select whether you want to center on the sheet or within the imageable area. You can override these settings in the Auto Plan dialog.



No Limitation on Bleeds

There is now no limit on the amount of bleed you can specify for a product. Previously, the valid bleed amount was restricted to -6" to 2" (-152.4mm to 50.8mm).

Adding Marks Sets in Memory-only Mode

Metrix 22.2 adds support for Marks Sets when working with MXML in memory-only mode. You can find an example of this in the "Sample Embedded Commands Job.mxml" file located in the Metrix Commands > Inches folder.

Shingling Overrides in Export Dialog

It is now possible to override the Shingling settings when exporting Imposed PDF, JDF Imposition, and MXML files. There is a **Shingling Overrides** button in the Export dialog. Clicking this button opens the Shingling Parameters dialog, where you can change the Shingling settings for the project.

