

VIRGINIA RANDOLPH CAMPUS RENOVATIONS SCHEMATIC DESIGN PRESENTATION

June 23rd, 2022



MOSELEYARCHITECTS

AGENDA

1. The Process
2. Site Plans
3. Floor Plans
4. Building Massing
5. Next Steps



THE PROCESS



VIRGINIA RANDOLPH CAMPUS

10.3 ACRES | BOUNDARIES - APARTMENTS, BUDDHIST TEMPLE, GLEN ALLEN SOFTBALL | DIVERSE SERVICES & PROGRAMS | HISTORIC COMPONENT





DEMOLITION

SWING SPACE

DESIGN WORKSHOP #1

DESIGN WORKSHOP #1 | IDEA MINING



MOSELEYARCHITECTS



DESIGN WORKSHOP #1 | PROJECT MISSION STATEMENT

The Campus of Virginia Randolph embodies the legacy of a woman who persevered and overcame many obstacles. We strive to create a welcoming and hopeful place of safety and learning focusing on student and family outcomes while providing resources for the community. With access to social, emotional and educational experts, and using evidence-based learning opportunities designed for self-regulation and growth, our students are being prepared to reach for success; not just in school but in life after.

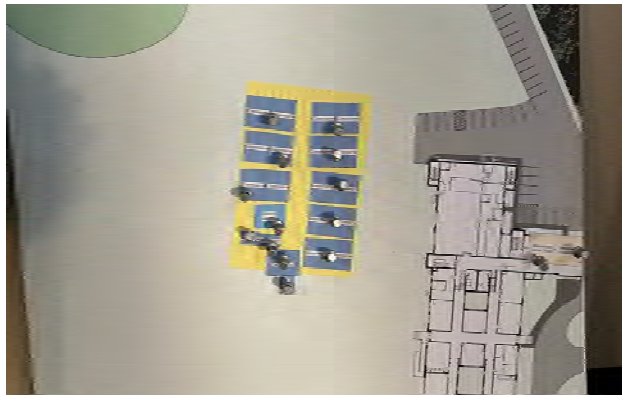
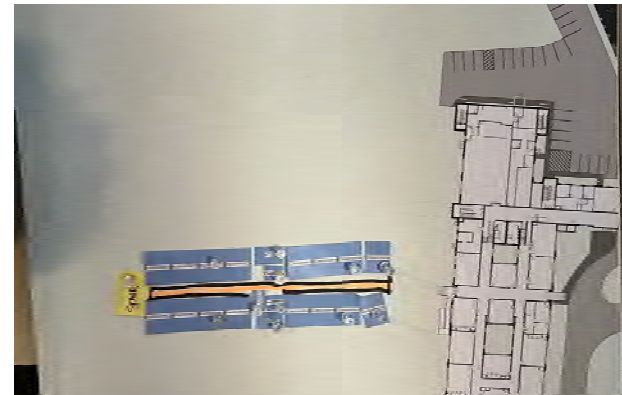
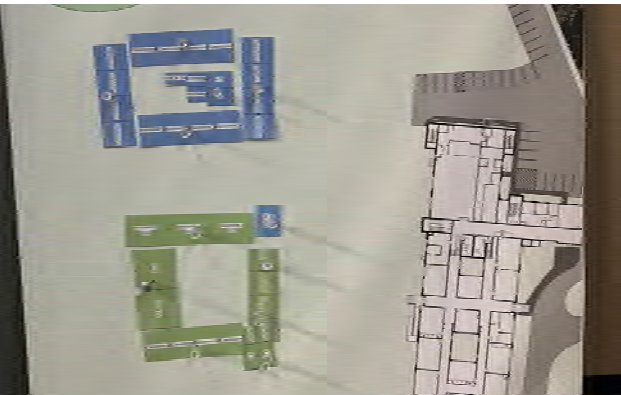
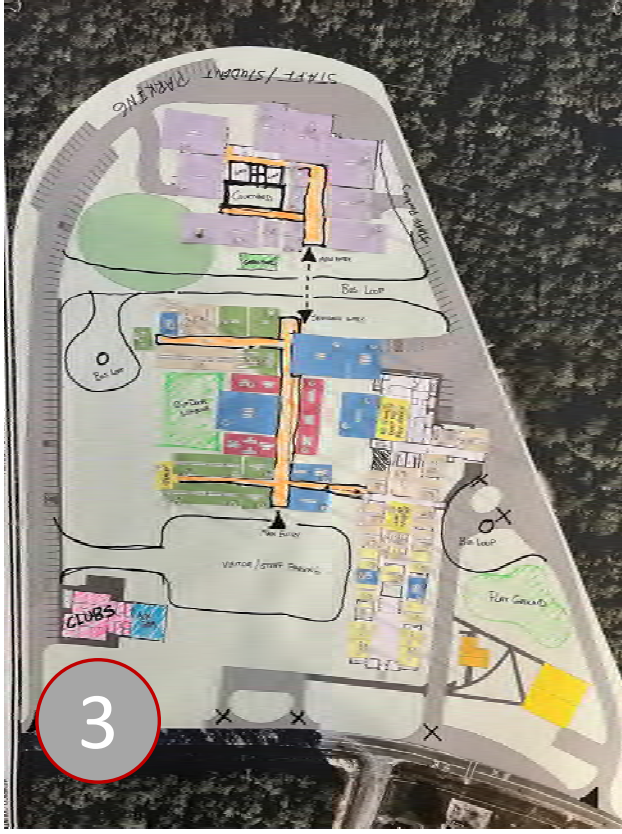


DESIGN WORKSHOP #1 | SMALL GROUPS



DESIGN WORKSHOP #1 | 5 DESIGN CONCEPTS

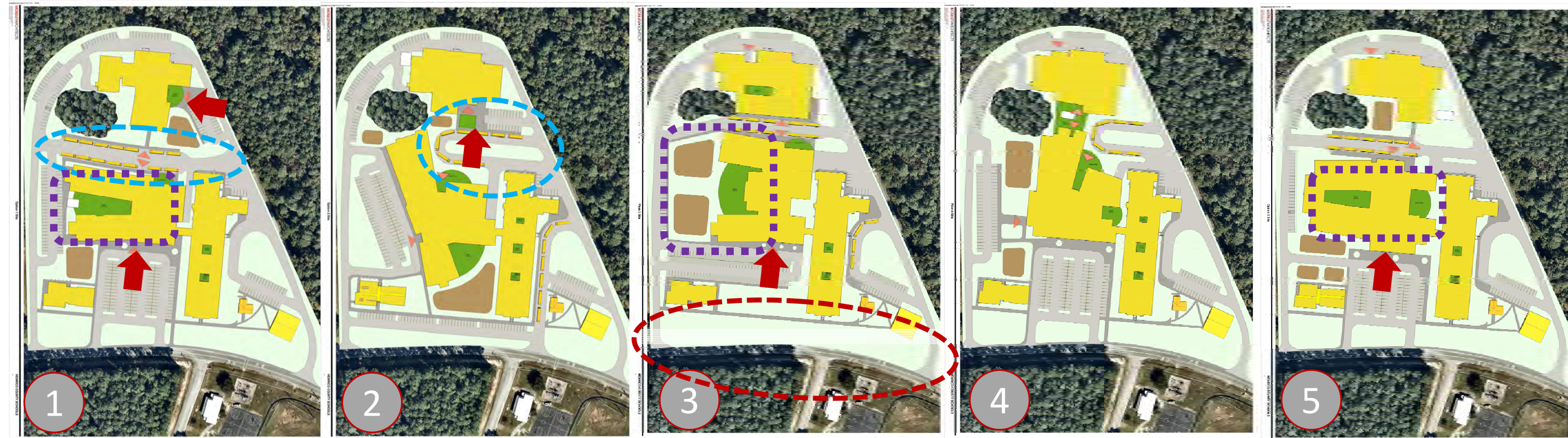
FIRST FLOOR



SECOND FLOOR

DESIGN WORKSHOP #2 | DEVELOPED SITE CONCEPTS

FIRST FLOOR

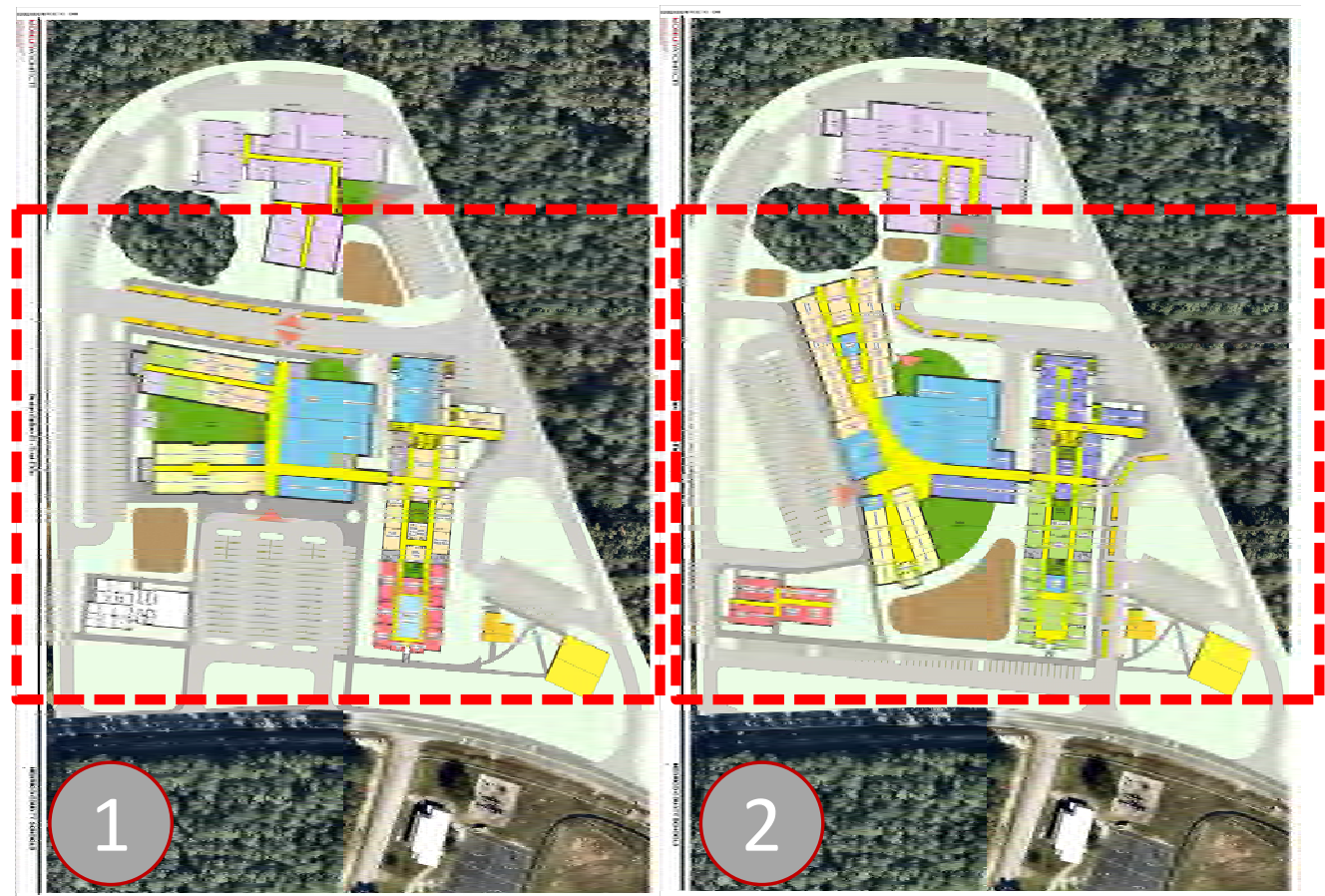


- Two Main Entrances to the site
- Boulevard Bus Loop VS. Conventional Bus Loop
- Main Building and CTE to remain separate with Identifiable Entrances
- Internally focused and secure outdoor spaces

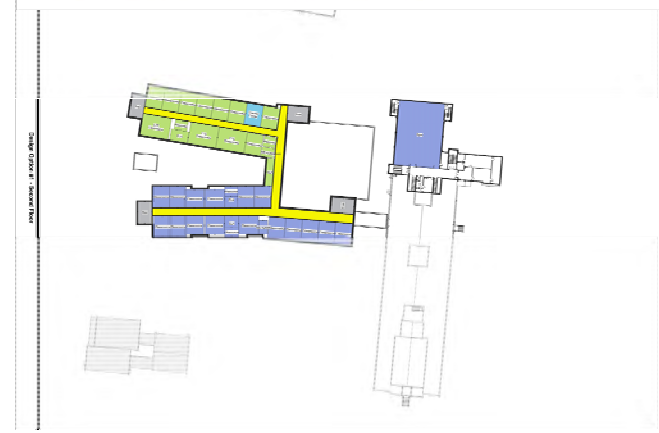
SECOND FLOOR

DESIGN WORKSHOP #2 | DEVELOPED PLAN CONCEPTS

FIRST FLOOR



SECOND FLOOR



DESIGN WORKSHOP #3 | DEVELOPED CTE CONCEPTS



FIRST FLOOR



FIRST FLOOR

DESIGN WORKSHOP #3 | DEVELOPED PLAN CONCEPTS



1

FIRST FLOOR



SECOND FLOOR



2

FIRST FLOOR

SCHEMATIC DESIGN



SITE PLAN



FIRST FLOOR



SECOND FLOOR

- LEGEND
- FAMILY AND COMMUNITY ENGAGEMENT
 - HS SCHOOL NON-TRADITIONAL
 - ADMINISTRATIVE / WORKROOM PROGRAMS
 - CIRCULATION
 - ES SCHOOL NON-TRADITIONAL
 - EXCEPTIONAL ED
 - CAFETORIUM / LIBRARY / MULTI-PURPOSE
 - MS SCHOOL NON-TRADITIONAL
 - OUTDOOR LEARNING
 - SUPPORT / MEP / STORAGE
 - CTE



NEXT STEPS

NEXT STEPS

June 2022	Schematic Design
July 2022	User Meetings
Fall 2022	Construction Documents
Late 2022	Project Bids
Early 2023	Construction Starts
August 2024	Project Complete

