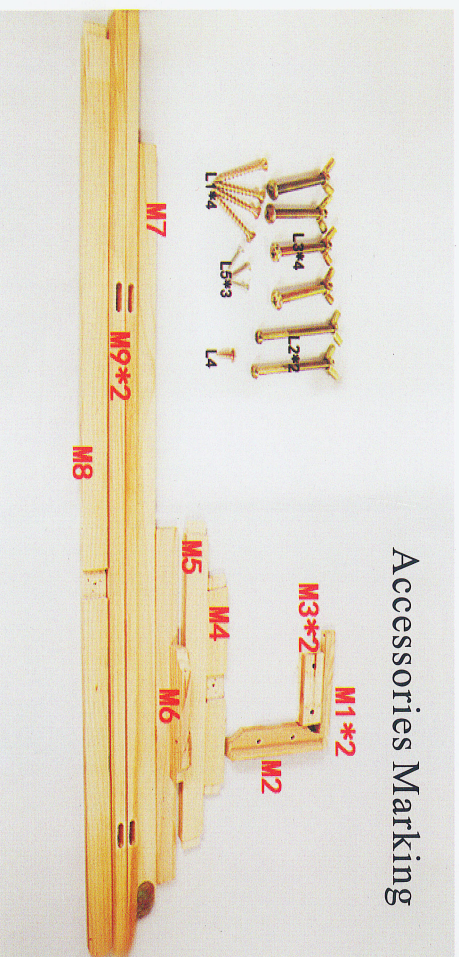


Description for installation of wooden easel(figure)

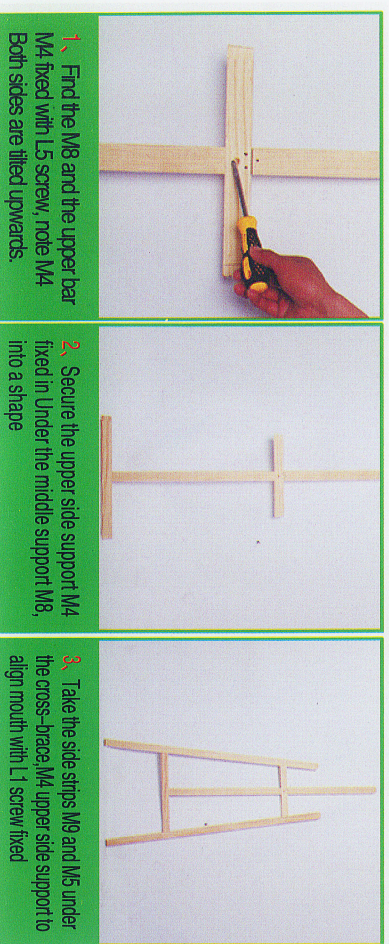


1. Please remove the sawdust from the holes above all the wood before installing;
2. Loading pages are divided into positive and negative, please refer to our photos when installing;
3. All nail screws are recommended to be screwed only 50 % first, and all are installed before tightening. (If the installation is wrong, you can remove the screw and start again from scratch);)
4. After installation, it is recommended to remove some burrs from the wood with a knife.

Install Step Gathering



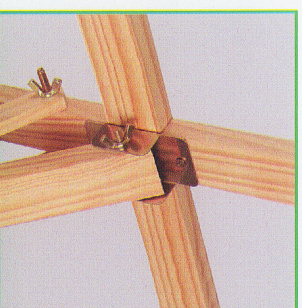
Accessories Marking



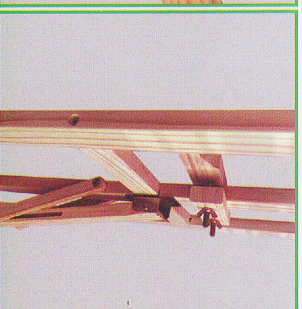
1、Find the M8 and the upper bar M4 fixed with L5 screw, note M4 Both sides are tilted upwards.

2、Secure the upper side support M4 fixed in Under the middle support M8, into a shape

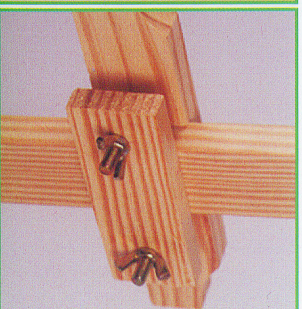
3、Take the side strips M9 and M5 under the cross-brace M4 upper side support to align mouth with L1 screw fixed



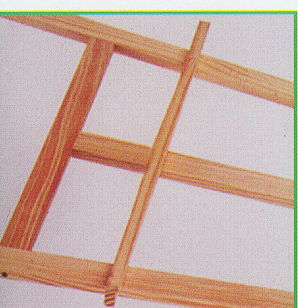
4、After the support M7 is installed in the middle support M8 and the upper horizontal support M4 has a screw side, fixed with screw L4



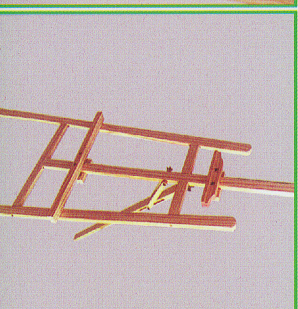
5、Take two M1 stroke rods and install them on the rear support M7 with screw L3.



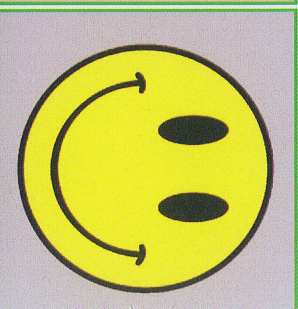
6、Take the M2 upper baffle and the M3 and install it above the support in the M8 and fix it with screw L3.



7、Remove the baffle M6 and M3 rear Shields Under the M8, with screws L3 Fixed



The assembly is complete.



It's a great sense of accomplishment!

