

SDL Trados Studio 2014

Innovation Delivered



Installation Guide

SDL | Trados
Studio 2014

SECTION 1: SDL TRADOS STUDIO
2014 SP2

Installation Guide



COPYRIGHT

SDL Trados Studio 2014 SP2 Installation Guide

Copyright © 2009–2014 SDL Group

Nothing contained herein may be reproduced, copied, modified or adapted, without the prior written consent of SDL Group. SDL Group means SDL PLC. and its subsidiaries. All intellectual property rights contained herein are the sole and exclusive rights of SDL Group. All references to SDL or SDL Group shall mean SDL PLC. and/or its subsidiaries details of which can be obtained upon written request.

All rights reserved. Unless explicitly stated otherwise, all intellectual property rights including those in copyright in the content of this documentation are owned by or controlled for these purposes by SDL Group. Except as otherwise expressly permitted hereunder or in accordance with copyright legislation, the content of this site, and/or the documentation may not be copied, reproduced, republished, downloaded, posted, broadcast or transmitted in any way without the express written permission of SDL.

SDL Trados Studio, SDL MultiTerm, SDL MultiTerm Online, SDL Studio GroupShare, PerfectMatch, SDLX, Passolo, TranslationZone, SDL Translator's Workbench, SDL TagEditor, QuickPlace, AutoSuggest, BeGlobal and GlobalConnect are registered trademarks of SDL Group. All other trademarks are the property of their respective owners. The names of other companies and products mentioned herein may be the trademarks of their respective owners. Unless stated to the contrary, no association with any other company or product is intended or should be inferred. This product may include open source or similar third-party software, details of which can be found by clicking the Acknowledgments section. Although SDL Group takes all reasonable measures to provide accurate and comprehensive information about the product, this information is provided as-is and all warranties, conditions or other terms concerning the documentation whether express or implied by statute, common law or otherwise (including those relating to satisfactory quality and fitness for purposes) are excluded to the extent permitted by law.

To the maximum extent permitted by law, SDL Group shall not be liable in contract, tort (including negligence or breach of statutory duty) or otherwise for any loss, injury, claim liability or damage of any kind or arising out of, or in connection with, the use or performance of the Software Documentation even if such losses and/or damages were foreseen, foreseeable or known, for: (a) loss of, damage to or corruption of data, (b) economic loss, (c) loss of actual or anticipated profits, (d) loss of business revenue, (e) loss of anticipated savings, (f) loss of business, (g) loss of opportunity, (h) loss of goodwill, or (i) any indirect, special, incidental or consequential loss or damage howsoever caused. Information in this documentation, including any URL and other Internet Web site references, is subject to change without notice. Without limiting the rights under copyright, no part of this may be reproduced, stored in or introduced into a retrieval system, or transmitted in any form or by any means (electronic, mechanical, photocopying, recording, or otherwise), or for any purpose, without the express written permission of SDL Group.

Acknowledgments

SDL Trados Studio includes open source or similar third-party software:

- Sharpzplib and Spring.net distributed under [GNU General Public License version 3](#) with restrictions
- Hunspell distributed under [GNU Lesser General Public License version 3](#)
- "ICU distributed under IBM ICU License
- Log4Net, Xalan and Xerces distributed under [Apache License version 2.0](#)
- "Wix distributed under Common Public License version 1.0
- Nalperion Licensing Services distributed under license

This guide ships with SDL Trados Studio 2014 SP2.

November 2014

TABLE OF CONTENTS

Chapter 1 Introducing SDL Trados Studio 2014 SP2

About this Guide	1-2
Audience for this Guide	1-2
Related Documentation	1-3
Introducing SDL Trados Studio 2014 SP2	1-4
About SDL Trados Studio 2014 SP2	1-4
Trial License	1-5
Studio Editions	1-6
SDL Trados Studio Professional	1-6
SDL Trados Studio Freelance	1-6
SDL Trados Studio Starter and SDL Trados Studio Express	1-7
SDL Trados Studio Workgroup	1-8
Regulated Industries	1-9
Upgrade and Compatibility Information	1-10
Information For Upgraders	1-10
SDL Trados Studio Project and Package Compatibility	1-11
Translation Memory Compatibility	1-12
MultiTerm Compatibility	1-13

Chapter 2 Installing SDL Trados Studio 2014 SP2

Overview	2-2
System Requirements	2-2
Operating Systems	2-2
Internet Browser	2-3
Digital Certificate Requirements	2-3
Companion Software Required by SDL Trados Studio 2014 SP2	2-4
Upgrading from an Earlier Version of SDL Trados Studio	2-4
About the SDL Trados Studio 2014 SP2 Installer	2-5
S-Tagger for FrameMaker	2-5
S-Tagger for QuickSilver	2-5
OpenExchange Apps	2-6
Prerequisite Software	2-7

Installation Location	2-7
Installing SDL Trados Studio 2014 SP2	2-8
Installation Media	2-9
Install SDL Trados Studio 2014 SP2	2-10
Before You Start	2-10
After Installation	2-14
Logging an Installation	2-14
Software Updates	2-15
Temporary Directory	2-15
Individual User Software Updates	2-15
Group Policy Software Updates	2-16
Logging a Software Update	2-20
Removing your Software Update	2-20
Maintaining your Installation	2-21
Repairing your SDL Trados Studio 2014 SP2 Installation	2-21
Removing SDL Trados Studio 2014 SP2	2-21
Technical Support	2-22
What's Next?	2-23



INTRODUCING SDL TRADOS STUDIO 2014 SP2

This chapter gives you an overview the of SDL Trados Studio 2014 SP2 client installation procedure and the SDL Trados Studio 2014 SP2 system. Sections include:

- ❑ About this Guide
- ❑ Introducing SDL Trados Studio 2014 SP2
- ❑ Studio Editions
- ❑ Upgrade and Compatibility Information

Chapter

1

ABOUT THIS GUIDE

This guide describes how to install and license SDL Trados Studio 2014 SP2 client.

This guide does NOT cover:

- ❑ Installing the server components of SDL Trados Studio 2014 SP2
- ❑ Installing the SDL MultiTerm 2014 SP2 application
- ❑ Converting or upgrading existing translation resources to use with SDL Trados Studio 2014 SP2
- ❑ Using SDL Trados Studio 2014 SP2

Audience for this Guide

This guide is for anyone who is installing any edition of SDL Trados Studio on a personal computer.

Related Documentation

- ❑ *SDL GroupShare Installation Guide* - contains information about installing the server components of SDL Trados Studio 2014 SP2 and how to upgrade server-based translation memories from SDL Server 2009.
- ❑ *SDL Trados Studio Migration Guide* - contains information about converting or upgrading existing translation resources from SDL Trados 2007 and SDLX so that you can work with them in SDL Trados Studio 2014 SP2.
- ❑ *SDL Trados Studio Help* - contains information about using SDL Trados Studio 2014 SP2.
- ❑ *Translating and Reviewing Documents Quick Start Guide* - contains information for translators and reviewers. It focuses on how to translate and review files.
- ❑ *Project Management Quick Start Guide* - contains information for project managers. It focuses on the project lifecycle.
- ❑ *Translation Memory Management Quick Start Guide* - contains information for users who create and maintain translation memories.
- ❑ *SDL MultiTerm Client Installation Guide* - contains information about installing SDL MultiTerm 2014 SP2 client.

INTRODUCING SDL TRADOS STUDIO 2014 SP2

SDL Trados Studio 2014 SP2 is an integrated environment that enables translation teams to share translation tools, resources and project files. Resources such as translation memories can be shared over an intranet or over the Internet.

You can also use SDL Trados Studio 2014 SP2 as a single-user tool where the SDL Trados Studio 2014 SP2 software and translation memories are located on your computer and there is no interaction with translation memories or projects over an intranet or the Internet. Single users can open and work with project packages created in other SDL Trados Studio 2014 SP2 installations.

About SDL Trados Studio 2014 SP2

The SDL Trados Studio 2014 SP2 client contains tools that enable you to:

- ❑ Create and maintain local and server-based translation memories.
- ❑ Create and manage translation projects.
- ❑ Open documents and translate them.
- ❑ Open server-based and local translation memories and apply them to documents.
- ❑ Open local and server-based termbases and apply them to documents.
- ❑ Update translation memories and termbases during translation.
- ❑ Align existing translated documents to generate translation memory content.

In a setup that includes server components, the SDL Trados Studio 2014 SP2 client communicates with server components through an intranet (through a LAN or WAN) or through the Internet using SDL GroupShare. SDL GroupShare includes the following components:

- ❑ Project Server
- ❑ TM Server
- ❑ MultiTerm Server

Trial License

SDL Trados Studio 2014 SP2 includes a 30 days trial license. At the end of 30 days, purchase a license if you want to continue using Studio.

As a service pack for Studio 2014, Studio SP2 does not extend the Studio 2014 trial. If you have already used the 30 days trial in Studio 2014, you cannot use the trial mode in Studio 2014 SP2.

STUDIO EDITIONS

The following editions of SDL Trados Studio 2014 SP2 are available:

- ☐ Professional
- ☐ Freelance
- ☐ Starter
- ☐ Express
- ☐ Workgroup
- ☐ Regulated Industries

SDL Trados Studio Professional

SDL Trados Studio Professional is the complete package that includes all available features. If you are also working with SDL GroupShare the server component of Studio, this edition gives you project manager functionality designed for use in GroupShare environments.



NOTE

If you are translating for a regulated industry, a separate license enables you to create regulator review bundles. These bundles contain a specific collection of documents needed by the regulator for review.

SDL Trados Studio Freelance

SDL Trados Studio Freelance is limited in the following ways:

- ☐ You can only work with five languages. To change your language selection at a later point, return the license, uninstall and reinstall, then activate your license again. This will take you back to the language selection window.
- ☐ You can use AutoSuggest dictionaries but you cannot create them. If you want to create AutoSuggest dictionaries, a separate AutoSuggest license enables you to do this.
- ☐ You cannot use SDL Trados Studio Freelance on a computer that is part of a domain-based corporate network.
- ☐ You can open and work with project packages, but you cannot create them.
- ☐ You cannot create custom task sequences.

- ❑ You cannot apply PerfectMatch to project files.
- ❑ You cannot publish GroupShare server-based projects.

SDL Trados Studio Starter and SDL Trados Studio Express

SDL Trados Studio Starter and SDL Trados Studio Express both have similar functionality to Freelance. What you can do in Starter and Express depends on which workflow you are using. The following list shows the key tasks that you can perform in each workflow. Express also allows you to run Studio as part of a domain-based corporate network and have use of an unlimited number of languages.

What you can do in Starter and Express

Single-File Translation Workflow in Starter

You can perform the following actions when you are in a single-file translation workflow. A single-file translation workflow occurs when you open a single file for translation using the **Translate Single Document** command.



NOTE

This workflow is not available in Express.

- ❑ Open a single file for translation.
- ❑ Create file-based translation memories.
- ❑ Add a single file-based translation memory to use during translation (The size of the translation memory is specified by your license).
- ❑ Add and remove termbases for translation.
- ❑ Edit translation units in a translation memory during translation.
- ❑ Edit translation memory settings.
- ❑ You can import and export translation memory data to or from a translation memory.
- ❑ Update the translation memory during translation.
- ❑ Generate a translated document.

Project Package Translation: Offline Workflow in Starter and Express

You can perform the following actions when you are in a project using packages in an offline workflow:

- ❑ Open project packages. (In Express, you can only open packages created in an SDL enterprise product. Enterprise products include WorldServer, TeamWorks and TMS.)
- ❑ Open files for translation or review from a project package.
- ❑ Disable or enable termbases in the package for translation.
- ❑ Disable or enable translation memories in the package for translation.
- ❑ Remove AutoSuggest dictionaries in the project for translation.
- ❑ Edit translation units in a translation memory during translation.
- ❑ Update the translation memory during translation.
- ❑ Return completed work in return packages.

Restrictions in Starter and Express

- ❑ The **Pre-translate**, **Populate Project TMs**, **Update Main TMs** and **Update Project TMs** batch tasks are disabled.
- ❑ The **Add Files**, **Add Folders**, **Add New Folder** and **Remove Files** commands in the **Files** view are disabled.
- ❑ You cannot specify custom settings when upgrading translation memories from previous editions of SDL Trados or SDLX.
- ❑ Translation memory maintenance in the **Translation Memories** view is disabled.
- ❑ The **Align Single File Pair**, **Align Multiple Files** and **Open Alignment** commands along with the **Alignment** view are disabled.

SDL Trados Studio Workgroup

If you are working with SDL GroupShare, the server component of Studio, the SDL Trados Studio Workgroup edition gives you functionality designed for use in GroupShare environments.

- ❑ You can open GroupShare projects.
- ❑ You can translate or review documents from GroupShare projects.

Other standard Studio functionality is available with the following limitations:

- ❑ You cannot create new projects.
- ❑ You cannot publish projects to SDL GroupShare.
- ❑ You cannot perform TM maintenance in **Translation Memories** view in Studio.

Regulated Industries

If you are translating for a regulated industry, you can purchase an additional license that enables you to create regulator review bundles. These bundles contain a specific collection of documents needed by the regulator for review. This license is an add-on for a Professional edition of Studio.

UPGRADE AND COMPATIBILITY INFORMATION

Information For Upgraders

If you currently have a previous version of SDL Trados or SDLX installed, you do not need to uninstall them before installing SDL Trados Studio 2014 SP2. The new version of the software will be installed side-by-side with previous versions of the software.

However, as a service pack for 2014, Studio 2014 SP2 installs on top of previous Studio 2014 versions and cannot run alongside these. Studio keeps all the configurations set in your 2014 version when you upgrade to Studio 2014 SP2.

If you want to install SDL Trados Studio 2011 and SDL Trados Studio 2014 SP2 on the same computer, make sure that you install the 2011 version first.

SDL Trados Studio Project and Package Compatibility

Projects

Projects in the 2011 and 2014 versions of SDL Trados Studio are the same format.

Projects created in SDL Trados Studio 2009 SP3 can be upgraded for use in SDL Trados Studio 2014. When you open a 2009 SP3 project in SDL Trados Studio 2014 SP2, you are asked if you want the project to be upgraded to the 2014 format. When you upgrade the project, the converted 2014 project is saved in the location of your choice and you can then choose if you want to archive the old 2009 project. If you do not archive the project, it is left in the 2009 project folder and can still be opened in SDL Trados Studio 2009 SP3.



NOTE

If you still need to work with SDL Trados Studio 2009 SP3 users who have not upgraded to a 2014 version of SDL Trados Studio, you can do this through the use of packages.

Packages

Packages in the 2011 and 2014 versions of SDL Trados Studio are the same format so you can easily work in a workflow between the two versions.

SDL Trados Studio 2014 SP2 supports a project package workflow between any 2014 version of SDL Trados Studio to SDL Trados Studio 2009 SP3 and back. To send packages to a 2009 user from 2014, select **Projects** view > **Home** tab > **Create Studio 2009 Project Package** option. For more information, see the online Help in SDL Trados Studio.

Translation Memory Compatibility

Software

SDL Trados Studio 2014 SP2 can connect to any 2011 and 2014 version of SDL TM Server. SDL Trados Studio 2014 SP2 cannot work with earlier versions of this server.

Server-based Translation Memories

You can use server-based translation memories created in SDL TM Server 2014, SDL TM Server 2011 and SDL TM Server 2009 SP3 directly in SDL Trados Studio 2014 SP2.

To use server-based translation memories created in SDL TM Server 2009 1.0, SP1 or SP2 in Studio SP2, first convert them to current SDL TM Server version format.

For information on how to upgrade these server-based translation memories, see the *SDL GroupShare Installation Guide*.

You can also use server-based translation memories created in SDLX Server, SDL TM Server 2007 or earlier versions of this product in Studio 2014 SP2 if you first convert them to the current format. To do this, use the **Upgrade Translation Memories** wizard in SDL Trados Studio. For more information, see the *SDL Trados Studio 2014 Migration Guide*.

Local (File-based) Translation Memories

If you have local translation memories from any of the SDL Trados Studio 2009 versions, you can work with them in SDL Trados Studio 2014 SP2.

You can use local translation memories that were created in SDL Trados 2007, SDLX 2007 or earlier versions of these products in SDL Trados Studio 2014 SP2 if you first convert them to Studio 2014 format. To do this, use the **Upgrade Translation Memories** wizard in Studio. For more information, see the *SDL Trados Studio 2014 Migration Guide*.

MultiTerm Compatibility

Software

SDL Trados Studio 2014 SP2 is compatible with any 2011 and 2014 version of SDL MultiTerm Client. Studio 2014 SP2 can only connect to 2011 and 2014 versions of SDL MultiTerm Server. Studio 2014 SP2 cannot work with earlier versions of this server.



NOTE

Depending on which edition of SDL Trados Studio 2014 SP2 you purchased, SDL MultiTerm 2014 SP2 may be included in the purchase. However, it is not installed automatically. If you want to install SDL MultiTerm 2014 SP2, you must run the SDL MultiTerm 2014 SP2 installer. For more information, see the *SDL MultiTerm 2014 Client Installation Guide*.

Server-based Termbases

You can use server-based termbases that were created in SDL MultiTerm Server 2014, SDL MultiTerm Server 2011 or SDL MultiTerm Server 2009 SP3 directly in SDL Trados Studio 2014 SP2.

Server-based termbases that were created in SDL MultiTerm Server 2007 and 2009 SP1 or SP2 can be used in SDL Trados Studio 2014 SP2 but they must first be converted to SDL MultiTerm Server 2014 format. To do this, use the **SDL MultiTerm Server Upgrade Wizard** in the SDL MultiTerm Server Console. For more information, see the *SDL MultiTerm 2014 online Help*.

Local (File-based) Termbases


If you have access to termbases from any version of SDL MultiTerm 2014, SDL MultiTerm 2011 SP2, or SDL MultiTerm 2009 SP3/SP4, you can work with them in SDL Trados Studio 2014 SP2. You can search termbases, insert term translations into documents, add new terms to termbases and edit or delete termbase entries.

Local termbases created in MultiTerm 2009, SDL MultiTerm 2007 (7.5 and 7.x releases) or MultiTerm iX (version 6.x) can also be used in SDL Trados Studio 2014 SP2 but they must first be converted to SDL MultiTerm 2014 format.

When you select a termbase from a version previous to SDL MultiTerm 2009 SP3/SP4 in SDL Trados Studio SP2, you are asked if you want the termbase to be converted to SDL MultiTerm 2014 format. When a termbase is converted, the converted termbase file overwrites the original termbase in the same location.

**NOTE**

- ❑ Once a termbase has been converted to SDL MultiTerm 2014 format, it cannot be reverted to an earlier format.
- ❑ If you want to work with SDL MultiTerm 2009 (1.0, SP1, SP2), SDL MultiTerm 2007 or MultiTerm iX termbases in SDL Trados Studio 2014 SP2 and you also want to be able to open the termbases in the original MultiTerm application, create copies of the termbases before you open them in SDL Trados Studio 2014 SP2.



INSTALLING SDL TRADOS STUDIO 2014 SP2

This chapter contains all the information you need to install SDL Trados Studio 2014 SP2 client. It describes the hardware and software requirements for running SDL Trados Studio 2014 SP2 and provides a step-by-step guide to installing SDL Trados Studio 2014 SP2. Sections include:

- ❑ System Requirements
- ❑ About the SDL Trados Studio 2014 SP2 Installer
- ❑ Installing SDL Trados Studio 2014 SP2
- ❑ Software Updates
- ❑ Maintaining your Installation
- ❑ What's Next?

Chapter

2

OVERVIEW

This chapter describes the system requirements and installation steps for Studio 2014 SP2.

SYSTEM REQUIREMENTS

To install and run SDL Trados Studio 2014 SP2 you need:

- ❑ A Microsoft Windows-based PC (including Intel-based Apple Mac computers running Windows as an operating system) with 1 gigahertz (GHz) or higher, 32-bit (x86) or 64-bit (x64) processor and 2 GB RAM (32-bit) or 4 GB RAM (64-bit).
- ❑ A screen resolution of 1280x1024 pixels and 256 colors or higher.
- ❑ 2 GB of available disk space to run Studio.
- ❑ Up to 2.5 GB of available disk space to run the Studio installer.

For optimum performance on 64-bit operating systems, SDL recommends a recent processor with dual or multi-core technology, 4GB of RAM and a screen resolution higher than 1280x1024.

Operating Systems

- ❑ SDL Trados Studio 2014 SP2 runs on the latest service-packed versions of Windows Vista, Windows 7 and Windows 8. Studio also supports Windows 2003 Server, Windows 2008 Server and Windows 2012 Server to facilitate certain scenarios, for example where Citrix terminal services are used.
- ❑ Studio does not support earlier operating systems such as Windows 2000, Windows NT, Windows 98 and Windows 2003 Server pre-SP2.
- ❑ Microsoft has stopped support for Windows XP. As a result, we are no longer testing or supporting Studio on Microsoft Windows XP.

We recommend that you upgrade to a newer version of Windows, or continue using the original Studio 2014 release (non-SP1 or SP2). If you no longer have the Studio 2014 installer, you can find it under **Archived Product Updates** in your **SDL Account**.

- ❑ SDL recommends that you use the same operating system as the other users with whom you are sharing packages as the number of supported languages can vary depending upon the operating system used.

Internet Browser

- ❑ Microsoft Internet Explorer 7 is the minimum requirement for SDL Trados Studio. You need this for displaying the online Help.
- ❑ If you access the Help directly in a browser instead of clicking the **Help** button inside the Studio application, you can also use Mozilla Firefox 3 or higher.

Digital Certificate Requirements

All SDL Trados Studio and installer files are digitally signed. Make sure your list of approved root certificates is up-to-date and includes the root certificate from the Certification Authority that generates SDL's code signing certificate.

- ❑ For computers with access to the Internet:
 - ❑ Windows Vista or later - Go to <https://www.digicert.com> and add the new root certificate to your **Trusted Root Certification Authorities** certificate store.
 - ❑ Windows XP or earlier - Go to <http://catalog.update.microsoft.com/v7/site/Home.aspx> and search for either root update or KB931125 to find the correct cumulative Root Update package to install.
- ❑ For computers in a locked down corporate environment without access to the Internet:

Follow the **Root update package installation on disconnected environments** instructions available at <http://support.microsoft.com/kb/931125>. The root certificate updates are available from <http://catalog.update.microsoft.com/v7/site/Search.aspx?q=KB931125>.

You can also download the specific root certificates directly from <https://www.digicert.com/digicert-root-certificates.htm> and apply the certificates to each locked down workstation manually or by group policy. At the time of writing, Studio require DigiCert Assured ID Root CA and DigiCert Assured ID Code Signing CA-1.

Companion Software Required by SDL Trados Studio 2014 SP2

Companion software is the non-SDL software that you may want to have installed on your computer so that SDL Trados Studio 2014 SP2 can function correctly.

Microsoft Office 2007-2013

SDL Trados Studio 2014 SP2 fully supports all Microsoft Office 2007, 2010 and 2013 file formats. Microsoft Office 2007, 2010 or 2013 is required to use:

- ❑ The Preview features.
- ❑ Microsoft Word spell-checking.

Microsoft Word 2003 or later

This is needed for processing RTF-based files.

The Real-time preview feature is not available for Click-to-Run versions of Word or for Word 2003.

The Microsoft Excel 2000-2003 file filter converts Microsoft Excel 2000-2003 files to Microsoft Excel 2007 documents on the fly and reconverts them back to Microsoft Excel 2000-2003 after translation. This speeds up the conversion for Microsoft Excel 2000-2003 documents significantly. For this file type to work correctly:


- ❑ On computers with Microsoft Excel 2000-2003 installed, install the Microsoft Office 2007 compatibility pack available from <http://www.microsoft.com/downloads>. This will ensure that SDL Trados Studio 2014 SP2 can do the on-the-fly conversion. If the compatibility pack is not installed, the previous, slower Microsoft Excel 2000-2003 filter will be used.
- ❑ On computers with Microsoft Excel 2007 installed, you do not need to do anything. The conversion will happen in the background.

Upgrading from an Earlier Version of SDL Trados Studio

You do not have to uninstall an earlier SDL Trados version before installing SDL Trados Studio 2014 SP2.

ABOUT THE SDL TRADOS STUDIO 2014 SP2 INSTALLER

The installer for SDL Trados Studio 2014 SP2 contains the following items:

SDL Trados Studio 2014 SP2	This is the SDL Trados Studio 2014 SP2 product.
SDL MultiTerm 2014 SP2 settings including SDL MultiTerm 2014 SP2 Core	<p>These enable you to work with SDL MultiTerm termbases without having SDL MultiTerm Desktop installed.</p> <p> NOTE</p> <p>SDL MultiTerm Desktop 2014 SP2 is not included in the SDL Trados Studio 2014 SP2 installer. For more information, see the <i>SDL MultiTerm 2014 Client Installation Guide</i>.</p>
SDL Trados Legacy Compatibility Module for Studio 2014 SP2	This contains S-Tagger for FrameMaker and S-Tagger for QuickSilver . You can launch these applications from File > Legacy DTP Formats .
OpenExchange Apps	There are four OpenExchange Apps included in the installation. These are add-ons to enhance the existing Studio functionality.
Prerequisite software	<p>For Studio 2014 SP2 to work, there are a number of other pieces of software that need to be present on your computer. Most of these are also used by other applications and you probably have them already. However, if they are not present, they will be installed automatically.</p> <p>A complete list of the prerequisite software is given below.</p>

S-Tagger for FrameMaker

This is a conversion tool, used to prepare FrameMaker MIF files for translation with SDL Translator's Workbench, SDL TagEditor and Word.

S-Tagger for QuickSilver

This is a conversion tool used to prepare Interleaf IASCII files for translation with SDL Translator's Workbench, SDL TagEditor and Word. Interleaf is part of the QuickSilver XML application suite.

OpenExchange Apps

- ❑ [SDL Batch Find and Replace.](#)
- ❑ [SDL TTX IT!](#)
- ❑ [SDL T-Window for Clipboard.](#)
- ❑ [SDL XLIFF Converter for Microsoft Office.](#)

Prerequisite Software

The SDL Trados Studio 2014 SP2 installer will install the following software, if it is not already present on your computer:

- ☐ Microsoft .NET Framework 4
- ☐ Windows Imaging Component (32-bit) if you have a Windows 2003 Server.
- ☐ Windows Imaging Component (64-bit) if you have a Windows 2003 Server.
- ☐ Windows installer 4.5
- ☐ Microsoft Visual C++ 2008 Redistributable SP1
- ☐ Microsoft Visual C++ 2010 Redistributable
- ☐ Microsoft Office 2003 Primary Interop Assemblies (only required if Microsoft Office 2003 is installed on the computer where SDL Trados Studio is being installed)
- ☐ Microsoft Office 2007 Primary Interop Assemblies (only required if Microsoft Office 2007 is installed on the computer where SDL Trados Studio is being installed)
- ☐ Microsoft Web Services Enhancements 2.0 SP3
- ☐ Open XML SDK 2.0 for Microsoft Office

Installation Location

The default installation location for SDL Trados Studio 2014 SP2 components is:

```
%programfiles(x86)%\SDL\SDL Trados Studio\Studio3
```

The Program Files folder on your computer may have a different name if you are using a non-English operating system.

INSTALLING SDL TRADOS STUDIO 2014 SP2

Installing SDL Trados Studio 2014 SP2 involves the following steps:

- Step 1** Install SDL Trados Studio 2014 SP2.
The installer contains a number of compressed files which Studio decompresses when you start the installation. Next, the actual installation takes place.
- Step 2** Once installed, you can start SDL Trados Studio 2014 SP2. The **Product Activation** dialog box is displayed. Here you can activate your product or choose to use the 30 days trial. The trial license runs SDL Trados Studio in Professional mode for 30 days. At the end of 30 days you must activate your own license. If you do not have a valid license at that time, you can no longer use Studio. If you have purchased a Freelance, Starter or Express license, you may want to take advantage of the trial license as it will give you access to more functionality than your own license. For more information, see *Studio Editions* on page 16.

Installation Media

When you purchase SDL software, you can download the software from the Internet.

- ❑ If you downloaded the software, go to the location where you stored the downloaded files and run the installer from there.
- ❑ If you are installing the software from a network resource, ask your system administrator for the network location of the SDL Trados Studio 2014 SP2 installer setup program.

INSTALL SDL TRADOS STUDIO 2014 SP2

The installation routine for SDL Trados Studio 2014 SP2 is based on an installation wizard which guides you through the process.

- ❑ To install SDL Trados Studio 2014 SP2, you must have local administrator rights on your computer.
- ❑ The installer also supports administrative and silent installations. You can find instructions for administrative and silent installations in the Studio Enterprise Deployment Guide which is available from SDL Customer Support. For information on how to contact Customer Support, see www.sdl.com/support/language-technology-products.

Before You Start

To install SDL Trados Studio 2014 SP2:

- 1 In the **Downloads** area of the [SDL Account](http://www.sdl.com) website, click the **Download** button next to SDL Trados Studio 2014 SP2:

A blue rectangular button with the word "Download" in white text.

 [Alternative download via FTP](#)

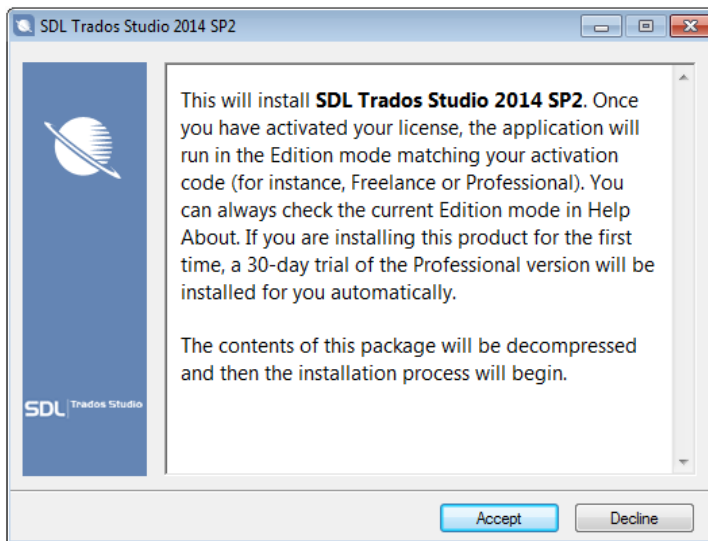
- 2 Click **Run** to download the self-extracting installation executable file.



NOTE

If you encounter any problems downloading the file, click the **Alternative download via FTP** link to download the file from an FTP side instead.

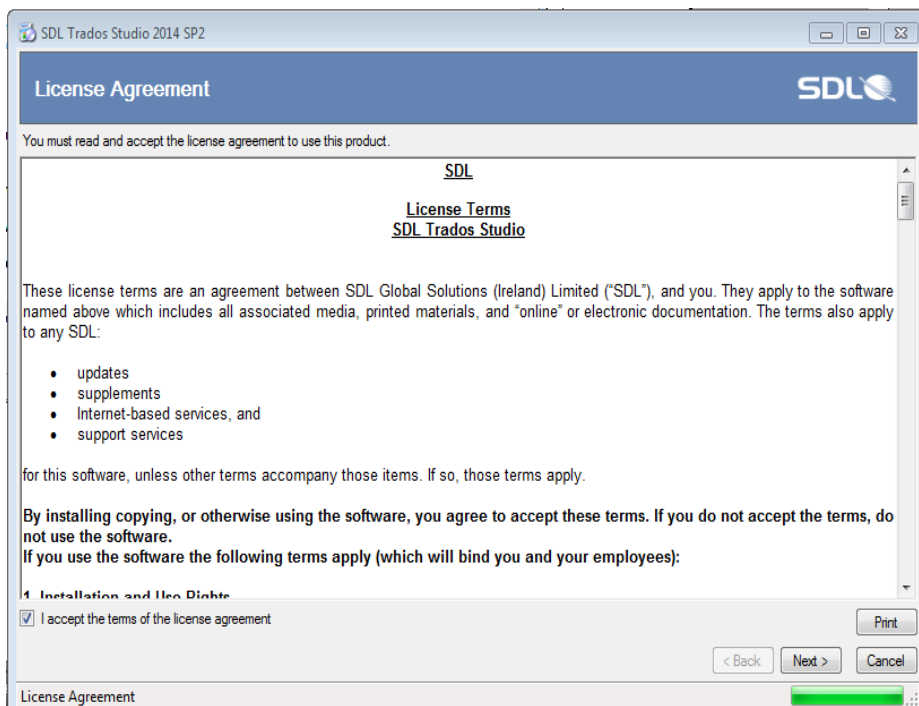
When all of the installation files have been decompressed, the first page of the **SDL Trados Studio 2014 SP2** installer is displayed.



- 3 Click **Accept**. The installer files are extracted to your computer. When all of the installer files have been extracted, the **License Agreement** page is displayed.

**NOTE**

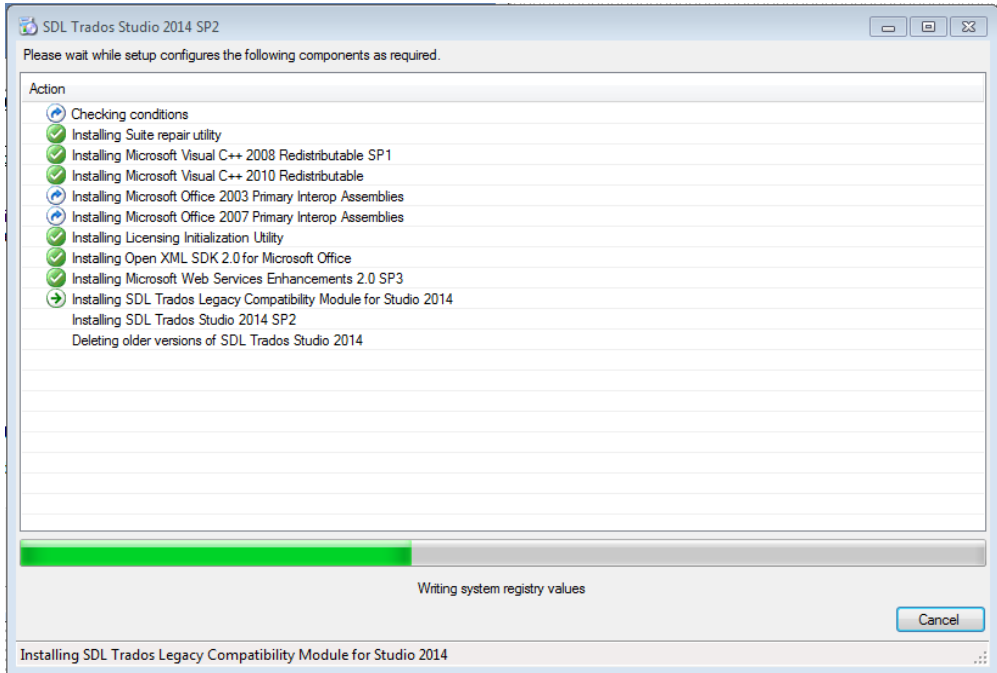
If you do not have Microsoft .NET Framework 4 and Windows installer 4.5 installed, these are installed now and you may be asked to restart your computer.



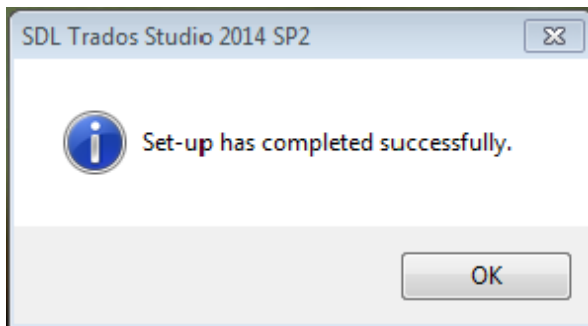
- 4 Accept the license agreement and click **Next**.

A screen listing all of the components that will be installed is displayed.

- 5 The installer installs the components and indicates the progress of the installation.



- 6 When the installation is complete, a confirmation dialog box is displayed. Click **OK**.



SDL Trados Studio 2014 SP2 is now added to the **Start** menu under **Programs > SDL > SDL Trados Studio 2014**.

After Installation

When you first start Studio, the following windows help you set up Studio for first time use:

- 1 The **Product Activation** dialog box, where you can activate Studio or choose to use the 30 days trial. For more information, click the **Help** button on the dialog box.
- 2 The **SDL Trados Studio Setup** wizard, where you can:
 - ☐ specify your user details and user profile for this instance of Studio.
 - ☐ start participating in the **SDL Customer Experience Improvement Program**.
 - ☐ load a sample project in order to explore the Studio functionality at startup.
- 3 The **Welcome to Language Cloud** wizard where you can connect SDL Trados Studio with SDL Language Cloud. This gives you access to SDL smart machine translation engines from within Studio. Use your SDL My Account credentials to sign up to Language Cloud and activate the 30 days free trial.

Logging an Installation

The installation is logged automatically. Log files are created here:

%ALLUSERSPROFILE%\Application Data\SDL\Chainer\Logs

SOFTWARE UPDATES

Some software updates to the application can be downloaded from within SDL Trados Studio or software updates can be automatically checked for and downloaded when SDL Trados Studio is started. You can specify how you want SDL Trados Studio to detect application updates or your system administrator can specify a group policy for all users.

Temporary Directory

Software updates are downloaded to the following temporary directory:

`%temp%\studio3updates`

After the update is installed, you can delete the files from this location.

Individual User Software Updates

An individual user of SDL Trados Studio can do the following:

- ☐ Specify that they want to check for software updates when SDL Trados Studio starts. They can do this on the **Automatic Updates** page of the **Options** dialog box.
- ☐ Manually check for updates by selecting **Help > Check for Updates** from the ribbon in SDL Trados Studio.



NOTE

If either of these options is unavailable, the system administrator has set a group policy that enables or disables checking for software updates.

Group Policy Software Updates

SDL Trados Studio includes a feature that notifies users of the availability of software updates and gives them the option to install the updates on their own computer. The system administrator can set a group policy that controls the way this feature works. You can choose to:

- ❑ Enable automatic checking for updates. When you choose this option, an automatic check for updates is made every time a user starts the application. When an update is available, the user is prompted to apply the update to their installation.
- ❑ Enable user control of checking for updates. When you choose this option, the users can enable automatic checks for updates (these take place whenever the application is started) and they can also check for updates manually at any time. When an update is available, the user is prompted to apply the update to their installation.
- ❑ Disable all checks. This option means that automatic checks for updates will not be performed and users cannot perform manual checks either. You should choose this option if you want to control the application of updates centrally.

You define a group policy by configuring the `Studio3AutoUpdate.adm` file in the **Group Policy** dialog box.

To define a group policy (note that the screenshots here may vary slightly, depending on the operating system that you are using):

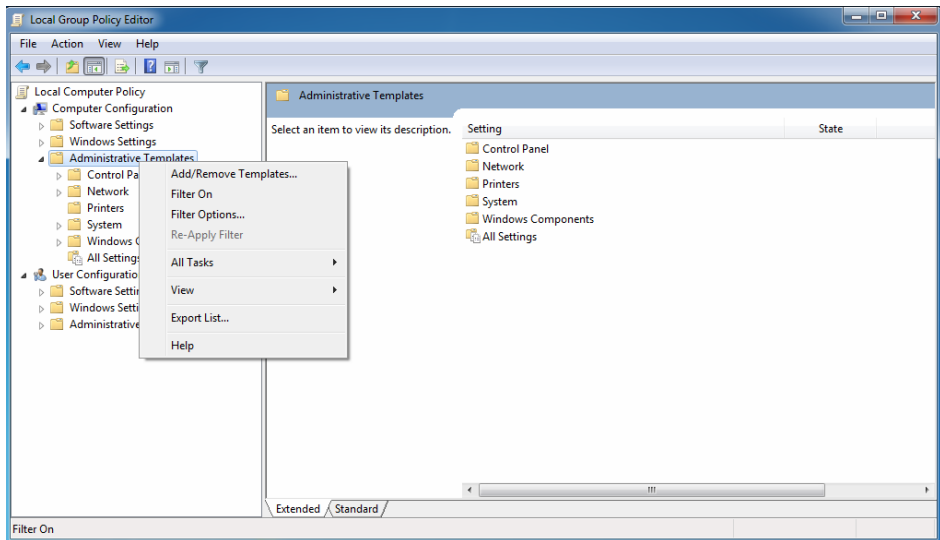
- 1 Locate the ADM file. The file name is: `Studio3AutoUpdate.adm`

The default location for this file is:

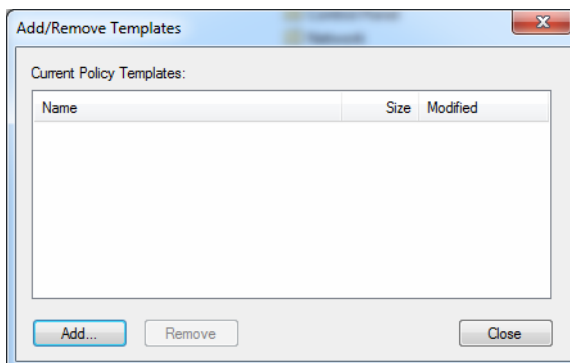
`%ALLUSERSPROFILE%\Package Cache\SDL\SDLTradosStudio2014_SP2`

- 2 Select **Start > Run** and enter the following command:
`gpedit.msc`

- 3 The **Group Policy** dialog box is displayed. Right-click on **Computer Configuration > Administrative Templates** and select **Add/Remove Templates** from the shortcut menu.

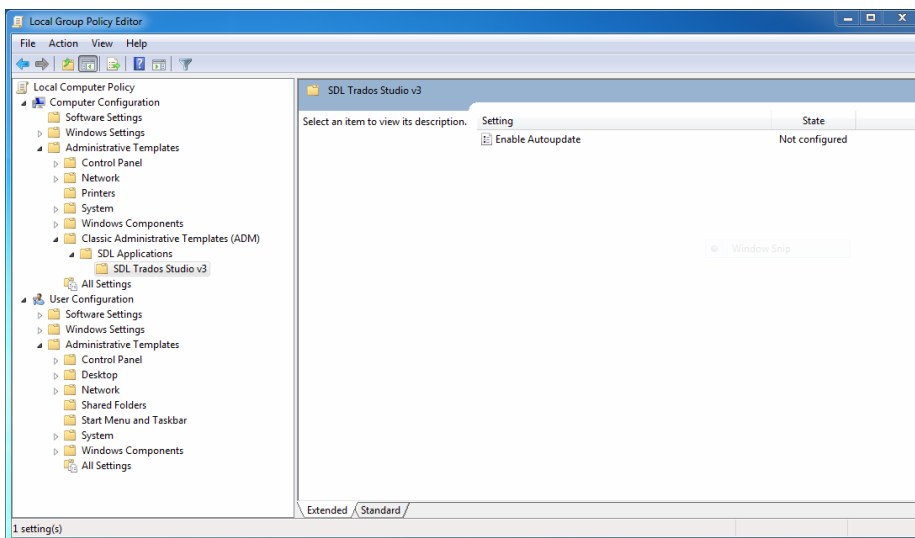


- 4 The **Add/Remove Templates** dialog box is displayed. Click **Add** and browse to the location of the `Studio3AutoUpdate.adm` file.



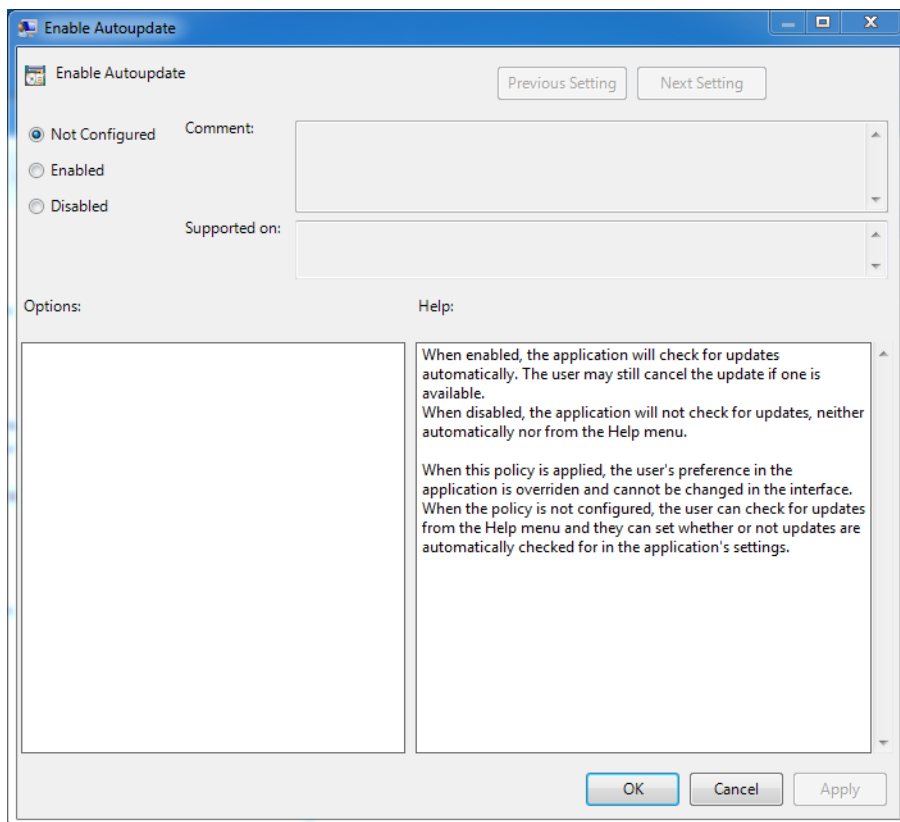
- 5 Click **Close** when the template is added.

- 6 **Computer Configuration > Administrative Templates > Classic Administrative Templates (ADM) > SDL Applications > SDL Trados Studio v3** is added to the navigation tree. Select **SDL Trados Studio** to display its settings on the right.



- 7 Double-click on the **Enable Autoupdate** setting.

- 8 The **Enable Autoupdate** dialog box is displayed. Select one of the following options and click **OK** to save the group policy:
- ☐ **Not Configured** - The user can choose to enable or disable checking for application updates automatically when the application starts and can also manually check for application updates.
 - ☐ **Enabled** - SDL Trados Studio checks for updates automatically when the application starts. The user cannot disable the automatic updates option. The user can also manually check for application updates.
 - ☐ **Disabled** - Automatic checks for application updates and manual checks for updates are disabled. The user cannot enable either of these options.



Logging a Software Update

The update is logged automatically. There are two log files that are created. The first log file is created when checking for updates and downloading installer for the update. This log file is located here:

`%ProgramData%\SDL\SDL Trados Studio\Studio3\Updates`

The other log file is created during the installation of the update and is located here:

`%temp%\studio3updates`

Removing your Software Update

If you encounter any problems after updating your software, you can remove the update.

To remove your software update:

- 1 From the **Start** menu on your computer, choose **Settings > Control Panel**.
- 2 In the **Control Panel**, select **Add or Remove Programs** or **Programs and Features**.
- 3 Ensure that the **Show updates** option is selected.
- 4 Select the software update from the list of programs and click **Remove**.
- 5 Follow the on-screen instructions to remove the software update.



NOTE

In addition to removing the update, clear the **Automatically check for updates when the application starts** check box on the **Automatic Updates** page of the **Options** dialog box. This disables the option and prevents the installation of the update again.

MAINTAINING YOUR INSTALLATION

You can repair or remove your SDL Trados Studio 2014 SP2 installation at any time.

Repairing your SDL Trados Studio 2014 SP2 Installation

Use the repair feature to repair or restore missing files or registry entries in your installation.

To repair your installation:

- 1 From the **Start** menu on your computer, select **Control Panel**.
- 2 In the **Control Panel**, select **Programs> Uninstall a Program**.
- 3 Select **SDL Trados Studio 2014 SP2** from the list of programs and click **Repair**. This starts the Windows Installer which runs the repair process.
- 4 When the process is complete, click **Finish**.
- 5 Repeat for **MT Core** and **Trados Studio Compatibility** if applicable.

Removing SDL Trados Studio 2014 SP2

Before uninstalling, we recommend that you deactivate your product license. To do this, call up **Help > Product Activation** in the application.

To uninstall:

- 1 From the **Start** menu on your computer, choose **Control Panel**.
- 2 In the **Control Panel**, select **Uninstall a Program**.
- 3 Select:
 - ☐ **SDL Trados Studio 2014 SP2 - Remove suite of products** from the list of programs to remove SDL Trados Studio 2014 SP2 and all of the components installed with the application. See *About the SDL Trados Studio 2014 SP2 Installer on page 3-5* for a list of the components installed with SDL Trados Studio 2014 SP2.
 - ☐ **SDL Trados Studio 2014 SP2** from the list of programs to remove only the SDL Trados Studio 2014 SP2 application.
- 4 Choose **Remove** or **Uninstall** as appropriate.

Technical Support

For more information on technical support, consult the online support center at <http://support.sdl.com>

WHAT'S NEXT?

The instructions in the **SDL Trados Studio Video Help Series** and the **Quick Start Guides** will quickly get you started with SDL Trados Studio. You can access the guides and videos directly from the [SDL Trados Studio Help](#).

If you have some existing translation resources, translation memories for example, you should migrate them to the SDL Trados Studio 2014 SP2 format. Converting or upgrading existing translation resources so that you can work with them in SDL Trados Studio 2014 SP2 is described in the *SDL Trados Studio 2014 SP2 Migration Guide*.



Copyright © 2014 SDL plc. All Rights Reserved. All company product or service names referenced herein are properties of their respective owners.

SDL enables global businesses to enrich their customers' experience through the entire customer journey. SDL's technology and services help brands to predict what their customers want and engage with them across multiple languages, cultures, channels and devices.

SDL has over 1,500 enterprise customers, 400 partners and a global infrastructure of 70 offices in 38 countries. 42 out of the top 50 brands work with SDL. For more information, visit www.sdl.com.