

Active, Agile & Acoustic Office Furniture



Index

AT THE HEART OF ACTIVE WORKING

Join the Workplace Revolution	3
Benefits of Active Working	
On Your Feet Britain®	

SMART SIT-STAND DESKS



ACTIVE Back-2-Back	6
ACTIVE 2+	
ACTIVE DESIGN	
ACTIVE 1	
ACTIVE 2	
ACTIVE 3+	

PODS & BOOTHS



Mobile Pods	Yo-Yo POD®	21
Meeting Pods	KABN®	
Work Booth	FOKUS®	
Phone Booth	FOKUS®	

ACOUSTIC DIVIDERS



Yo-Yo WALL	30
------------	----

CONTACT US



34



At the Heart of Workplace Evolution

Welcome to **Active Working®** the trade division of Yo-Yo OFFICE®. Wellness inspired **active, agile** and **acoustic** office furniture solutions made in the UK and Europe.

Since our formation in 2014 our focus has been to encourage “**more movement and activity**” within the workplace to reduce the health risks associated with prolonged sitting. Growing scientific evidence informs us that the #sitless #movemore mantra is essential to improve productivity and both **mental & physical wellness** of office workers.

At the age of 17, I lost my father to a coronary heart attack, a loss which has driven me to be a force for positive health outcomes. With support from **Public Health England**, I commissioned the first global **Expert Guidelines Statement** on standing & light activity for office workers. Published by the **British Journal for Sports Medicine** in June 2015, these guidelines now serve as a benchmark. The **Expert Guidelines Statement** recommends we convert **TWO hours** of sitting time to standing or light activity (during working hours) to reduce the risks of prolonged sitting. In 2014 I launched the **Get Britain Standing®**, a campaign responsible for dramatic growth in awareness health risks connected with prolonged sedentary working of office workers.

However, despite the increased penetration of standing desks in the workplace, 95% of height adjustable desks are not used actively or accurately. This is why we have developed the **SMART Active Desk** to engage and deliver much higher levels of usage, performance and health outcomes using the **Active Working App**. Available on multiple devices (PC, phone & watch), the **Active Desk** range empowers the user to set desk heights, movement goals and reminds you to change position. The user interface has

We continue to expand our range of active, agile and acoustic furniture. Our offering includes a range of booth & pods designed specifically for ad hoc meeting space, acoustic privacy and inclusive to team members on the move. The range comprise a wide mix of fixed meeting pods and mobile/ modular **Yo-Yo POD®**, **KABN** meeting pods, **FOKUS** work & phone booths and **Yo-Yo WALL®** acoustic media wall.

We look forward to working with you and your client deliver more active and agile workplaces.



Gavin Bradley
Founder & Chief Executive Officer
Yo-Yo OFFICE® Ltd

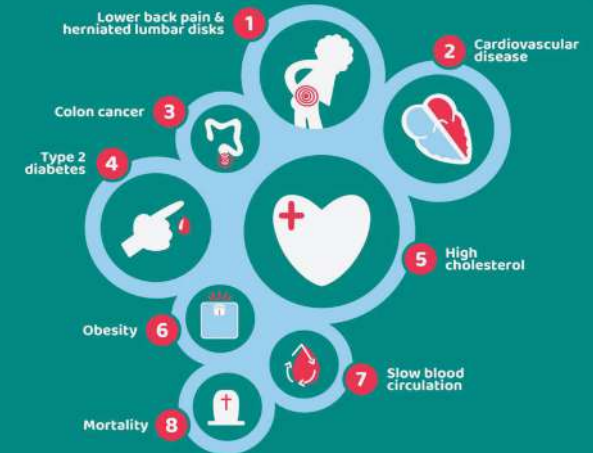


Health Expert recommend office workers use a Standing Desk for **2-HOURS** daily.



Only 5% of typical Standing Desk users stand for the recommended **2-HOURS** daily at their desk.

Office workers sit for an average of **10 hours per day**, with **70% of this sedentary time occurring at work**. Prolonged sitting significantly increases health risks.



For better mental and physical health, it's essential to **switch between sitting and standing every 30 minutes** to stimulate internal organs and improve blood and oxygen circulation.

Public Health England commissioned **Active Working C.I.C** to convene international experts in sedentary behavior and physical activity to assess the scientific evidence on the impact of prolonged sitting in offices. Their **2015 Expert Statement**, published in the British Journal of Sports Medicine, recommends that desk-based workers spend **2-4 hours per day standing and engaging in light movement** to reduce health risks and improve well-being.



Active Working – The Basics

Posture and Positioning

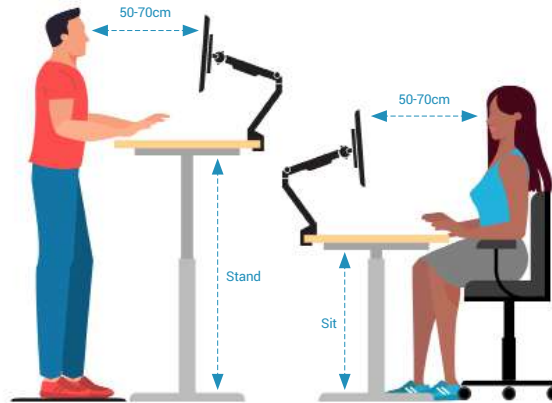
- Regular transitioning between sitting and standing
- Move every 30 minutes. Stand TWO hours during office hours
- Keep shoulders straight and neck up to maintain correct posture
- Regular movement reduces risk of muscle fatigue (and pain)

Head Position

- Neck straight, 50-70cm away from screen
- Eyes focusing on top third of screen

Wrist Position

- Wrists at elbow height or slightly below
- Elbows at right angles



Movement Improves Your Health

1. Mental Health

Regular movement activates key muscles groups, circulating blood, boosting oxygen flow and keeps internal organs active.

2. Physical Health

Every part of your body benefits from regular movement (including standing) including your brain, shoulders, back, core muscles, glutes and feet.

3. Productivity

It's simple – introducing minor movement changes into your daily routine will increase your mobility and boost your wellness.

Take frequent 'mini breaks' as opportunities to move up/down or away from your desk to help:



Activate your body



Increase your metabolic rate



Break down fats



Reduce blood sugar levels



Boost oxygen flow to your brain

On Your Feet Britain



Take part in **On Your Feet Britain®** – the national **activity** awareness day when **2 MILLION desk-based workers** across Britain participate in a variety of fun and simple activities to **#SitLess** and **#MoveMore** at work.

Taking place this year on the **Thursday 24th April 2025**.

On Your Feet Britain® is a **FREE** and **FUN** way to reboot and energize your workplace habits and is also a great team activity. This year we're looking

Research shows that regular movement throughout the day leads to

- Better physical and mental health
- Improved concentration
- Increased motivation
- And many, many more wellbeing and performance benefits

Remember it's **FREE** to sign up, www.onyourfeetday.com



Sustainability Focus

Passionate to improve the wellness of our environment, Yo-Yo OFFICE® sustainability drive includes:



Recycled and Sustainable Materials

Desk frames are made from 26% recycled steel. Pod frames are made from 100% hardwood ply and water-based adhesives. Pod fabrics are made 100% from recycled materials.



FSC Certification

All our desktops are made in Britain and FSC certified, an environmental label that requires that the production of wood-based products respect procedures that guarantee the sustainable management of forests.



Eco Packaging

100% cardboard ECO packaging removing plastics and polystyrene from inner packaging.



Solar Power

Our factory and warehouse are powered by electric solar panels.



Easily Re-upholstered & Recycled

Yo-Yo PODS are designed to be easily re-upholstered & recycled. Both carcass & fabrics can be easily dismantled and replaced.



Electric Vehicles

All our company cars are 100% electric powered.

Environmental Certification

All products supplied by **Active Working®** meet the strictest of European Environmental, Sustainability and Quality Management



DESKING

Environmental Product Declarations (EPD):



- ✓ ISO 14025 Environmental labels and declarations
- ✓ ISO 14040 Environmental Life cycle assessment
- ✓ ISO 14044 Environmental Life cycle assessment
- ✓ ISO 21930 Sustainability in Buildings & Civil Engineering Works
- ✓ ISO 15804+A2 Sustainability of construction



PODS, BOOTHS AND MEDIA WALLS

- ✓ ISO 9001 Quality Management Systems
- ✓ ISO 14001 Environmental Management Systems



Health Experts recommend office workers use a Standing Desk for **2-HOURS** daily



Only 5% of typical Standing Desk users stand for the recommended **2-HOURS** daily at their desk.

Active Desk Powered by Active Working®

- ✓ Set Goals, Heights & Timers
- ✓ Nudge Reminders
- ✓ Boost Calorie Burn
- ✓ Operates via PC, Phone or Smartwatch



SMART Active Desks

Active Desks integrate smart app features to encourage greater movement at height-adjustable desks. Compatible with PC, phone, and watch, they enhance wellness and ergonomics for a healthier work experience.

Active Working® App

Lifetime Subscription to boost usage, track performance & improve health



Move More @Work

All SMART **Active Desks** come with a lifetime subscription to the **Active Working® App**:

- Set-up desk heights for sitting/standing
- Define goals and track performance (inc calorie burn)
- Set Timer prompts to remind you to “change position”

Download Active Working® App to PC, Phone and/or Watch from relevant Microsoft, Apple or Android App Stores

Set Goals

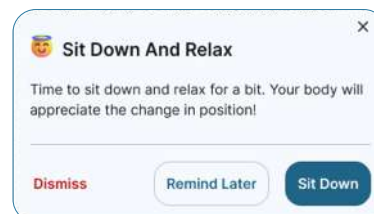
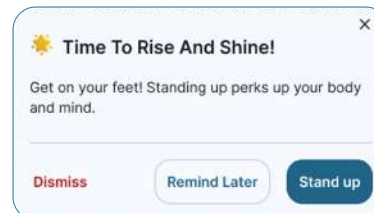
Set personal goals for both **standing time** and **position changes**. This will determine the **reminder messages** to keep you active throughout the workday, thereby improving well-being and boost productivity.



Manage Desk Heights



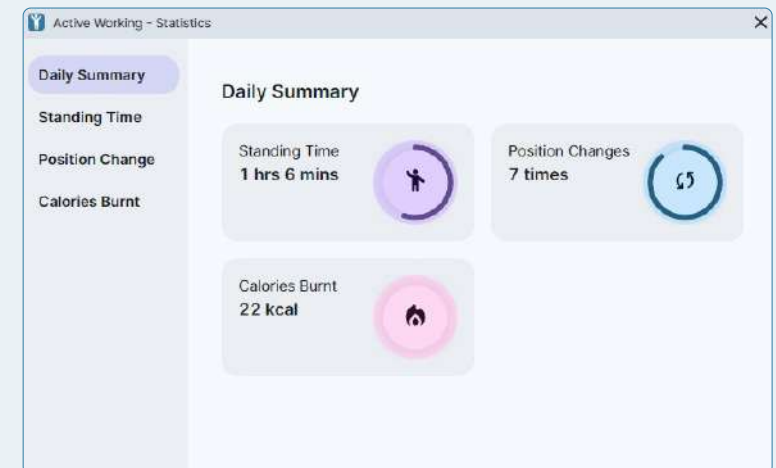
Nudges & Reminders



Track Movement & Performance

Gain insights into your daily, monthly, and annual activity with simple analytics. Improve ergonomics and health with real-time tracking of:

- Standing Hours
- Daily Position Changes
- Calories Burned



Active Working® App



Flexi Formats

Your Desk. Your Design

ACTIVE Desks, include the Active Working® App and are available for next day delivery. Flexible design formats and custom colours are also available for projects.

Column Shape & Leg Format

Rectangular

Big / Down



Big / Up



Circular

Big / Down



Big / Up



Square

Big / Down



Foot Shape & Leg Position

Flat Foot (A)

Centered



Flat Foot (A)

Off-Centered



Tapered Foot (B)

Centered



Tapered Foot (B)

Off-Centered



Sidebars & Privacy Screen Support

Sidebar

Universal



Sliding Desktop



Privacy Screen Support



Sidebar

Sliding Desktop



Off-Centered Feet



Customisable options:

Leg Shape: Rectangular, Square or Circular

Leg Direction: Big UP or Big DOWN is a personal preference. Big UP provides marginally more stability at standing height but Big DOWN may look more elegant. You decide!

Sidebars: for Fixed or Sliding Desktops

Feet Finish: with Flat or Tapered edging

Bespoke RAL Frame colours 7-8 week lead time and minimum order of ONE pallet.





ACTIVE Back-2-Back

Powered by Active Working® App

Lifetime Subscription



Enhancing Office Wellness

Coaching sit-stand desk users to Move More. Stay active with:

- ✓ Auto-Adjust Height Presets
- ✓ Movement Coaching & Reminders
- ✓ Performance Insights



ACTIVE Back-2-Back

Active Back-2 Back is a next-gen double sided SMART Desk. Set desk heights & timers to move, define goals & track performance (incl. calorie burn).



Features

- Double Desk, Dual Motor, 3 stage, adjustable width frame
- Smartphone, Smartwatch and PC controllable
- Active Working® App – lifetime subscription
- Bluetooth and USB connection
- Optional Cable Management Accessories incl. cable tray and cable box

Specifications

Colours	Black, White, Silver
Motors	2x2 (3-Stage Telescopic Legs)
Load Capacity	120kg per desk
Height Adjustment	610-1280 mm (Frame only)
Supported Top Size	Width: 1000–1800 mm Depth: 600–800 mm
Sustainability Certification	ISO 14025 ISO 14040 EN 527-2 ISO 14044 ISO 21930
Low standby consumption	0.02W
Noise level	<48dB
Velocity/speed	32 mm/sec
Anti-Collision Safety	Yes
MOQ / Origin / Lead time	10 units / EU / 5-6 weeks
Warranty	7- Years

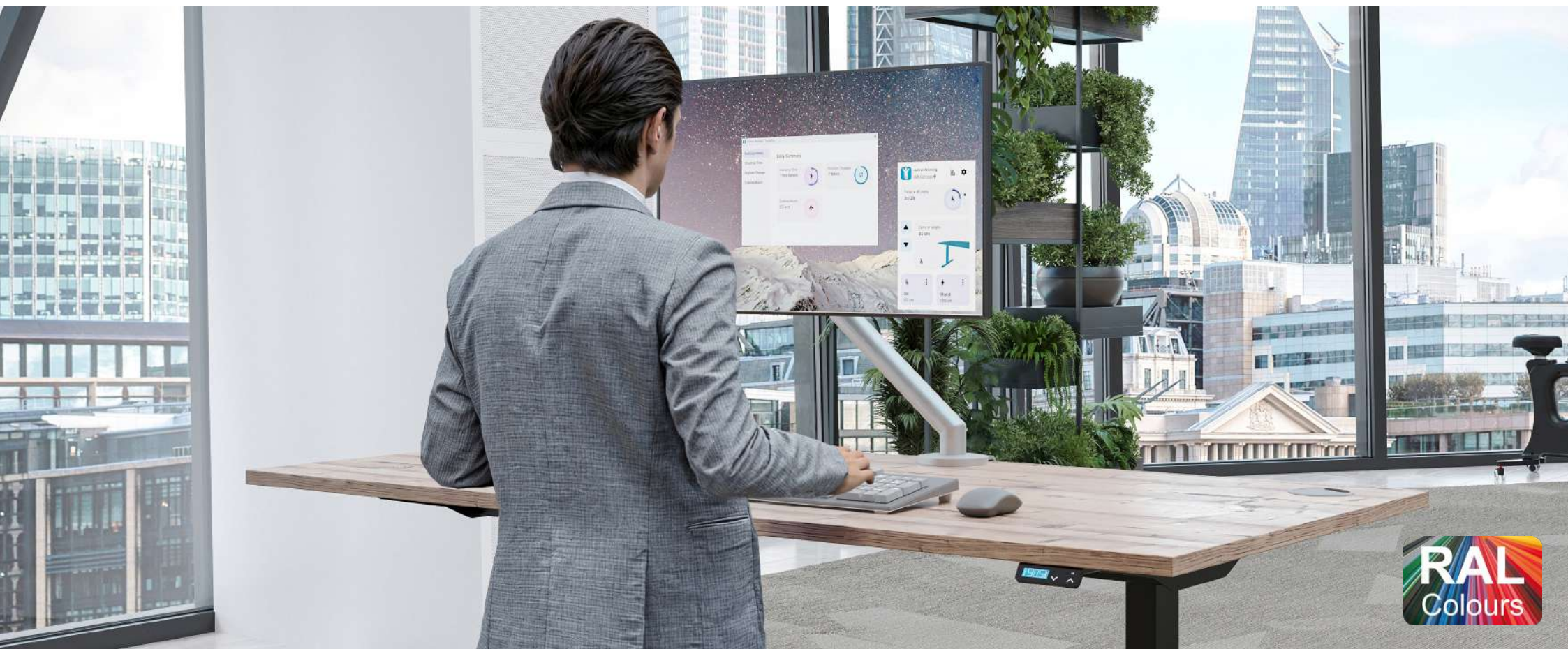




ACTIVE 2+

Powered by Active Working® App

Lifetime Subscription



SMART Desk. Healthier You

Reduce sedentary time at your desk:

- ✓ Personalised Movement Goals
- ✓ Timed Sit-Stand Reminders
- ✓ Performance Tracking



ACTIVE 2+

ACTIVE 2+ is a next-gen SMART Desk. Allows user to set desk heights & timers to move, define goals & track performance (incl. calorie burn). **Active Working®App** coaches you reach the **NHS-recommended 2-hours of daily standing time** at your desk.



NEXT DAY delivery



Quick Install



Features

- Dual Motor, 3 stage, adjustable width frame
- Pre-Assembled frame for Quick Install, single box
- Smartphone, Smartwatch and PC controllable
- Active Working® App – lifetime subscription
- Bluetooth and USB connection

Specifications

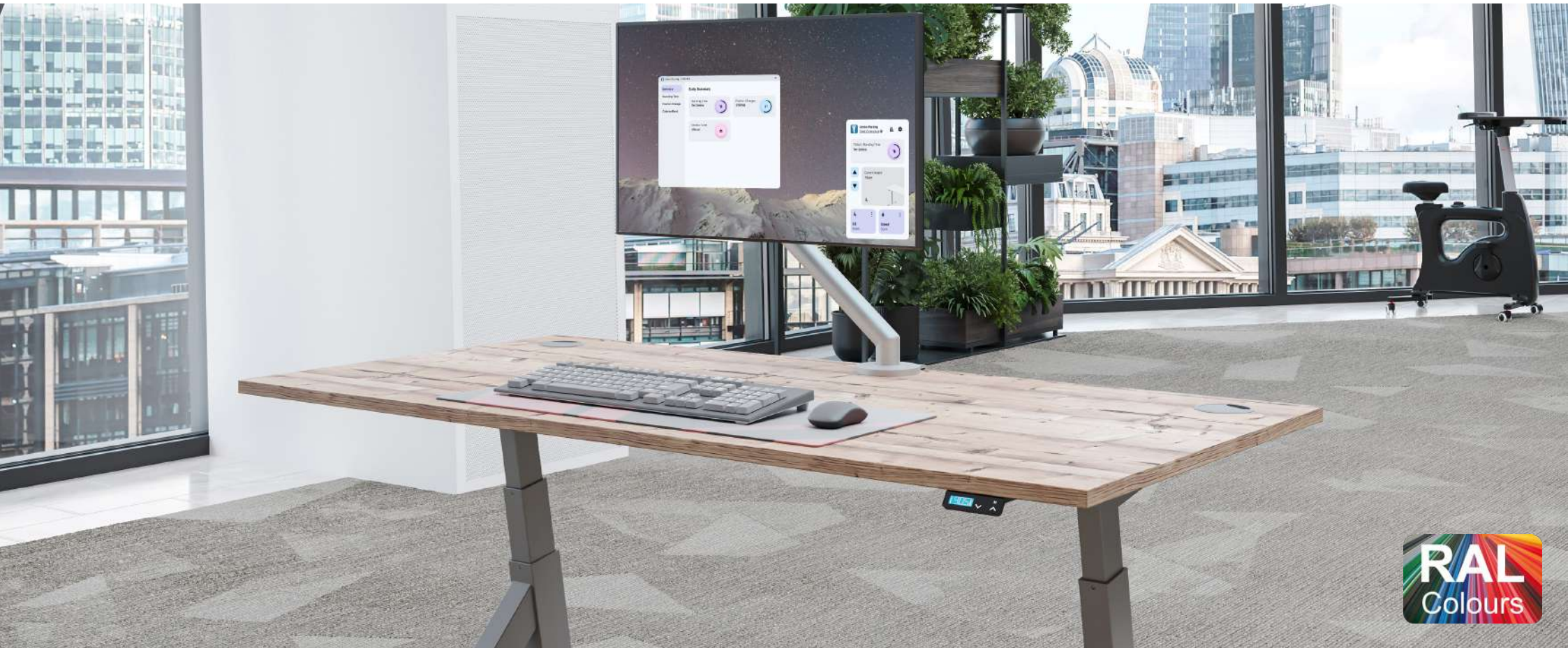
Colours	Black, White, Silver
Motors	2 (3-Stage Telescopic Legs)
Load Capacity	120kg
Height Adjustment	610-1270 mm (Frame only)
Supported Top Size	Width: 1000–1800 mm Depth: 600–800 mm
Sustainability Certification	ISO 14025 ISO 14040 EN 527-2 ISO 14044 ISO 21930
Low standby consumption	0.02W
Noise level	<48dB
Velocity/speed	32 mm/sec
Anti-Collision Safety	Yes
MOQ / Origin / Lead time	1 unit / EU / Next Day
Warranty	7- Years





Powered by Active Working® App

Lifetime Subscription



Elegant Sit-Stand with Data Analytics

Integrated Wellness Software:

- ✓ Set Heights and Movement Goals
- ✓ Timely reminders for movement and posture
- ✓ Performance Tracking



ACTIVE Design

Swedish “**Design thinking**” sit-stand desk makes a statement in home and large office environments. DESIGN has been innovatively remodeled to give an unconventional expression with remarkable stability. **Active Working®App** coaches you reach the **NHS-recommended 2-hours of daily standing time** at your desk.



Customisable Options



Features

- Designer Desk, Dual Motor, 3 stage, adjustable width frame
- Smartphone, Smartwatch and PC controllable
- Active Working® App – lifetime subscription
- Bluetooth and USB connection

Specifications

Colours	Black, White, Silver
Motors	2 (3-Stage Telescopic Legs)
Load Capacity	120kg
Height Adjustment	620-1200 mm (Frame only)
Supported Top Size	Width: 1200-1800 mm Depth: 800 mm
Sustainability Certification	ISO 14025 ISO 14040 EN 527-2 ISO 14044 ISO 21930
Low standby consumption	0.02W
Noise level	<48dB
Velocity/speed	32 mm/sec
Anti-Collision Safety	Yes
MOQ / Origin / Lead time	10 units / EU / 5-6 weeks
Warranty	7- Years

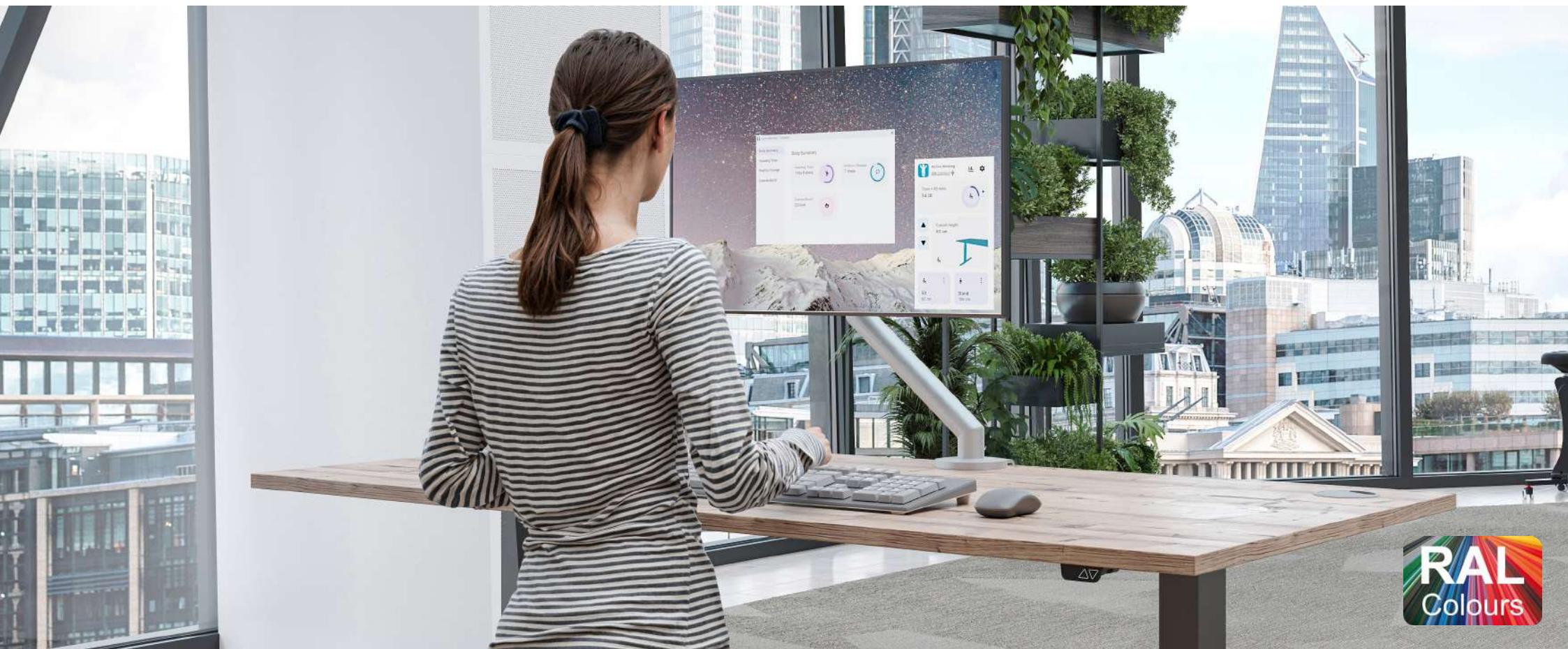




ACTIVE 1

Powered by Active Working® App

Lifetime Subscription



Transforming Workplace Wellness

Helping you stay active throughout the day with:

- ✓ One Click Sit-Stand Adjustments
- ✓ Smart Activity Coaching & Alerts
- ✓ Real-Time Performance Insights



ACTIVE 1

ACTIVE 1 is a single motor, entry level next-gen **SMART Active Desk**. Integrates with PC only. Allows you to set desk heights & timers to move, define goals track performance (incl. calorie burn) Our **Active Working® App** coaches you reach the **NHS-recommended 2-hours of daily standing time** at your desk.

 **NEXT DAY delivery**



Features

- Single, 2 stage, adjustable width frame
- Budget Solution. Suitable for home office.
- PC controllable
- Active Working® App – lifetime subscription

Specifications

Colours	Black, White, Silver
Motors	2 (2-Stage Telescopic Legs)
Load Capacity	100kg
Height Adjustment	680-1180 mm (Frame only)
Supported Top Size	Width: 1000–1600 mm Depth: 600–800 mm
Sustainability Certification	ISO 14025 ISO 14040 EN 527-2 ISO 14044 ISO 21930
Low standby consumption	0.02W
Noise level	<48dB
Velocity/speed	25 mm/sec
Anti-Collision Safety	Yes
MOQ / Origin / Lead time	1 unit / EU / Next Day
Warranty	5- Years





ACTIVE 2

Powered by Active Working® App

Lifetime Subscription



Smarter Desks, Healthier Workdays

Encouraging movement for a more active work routine:

- ✓ Set Heights and Movement Goals
- ✓ Timely reminders for movement and posture
- ✓ Improving health and productivity



ACTIVE 2

Active 2 is a next-gen dual motor SMART Desk. Allows both users to set desk heights & timers to move, define goals & track performance (incl. calorie burn). **Active Working®App** coaches you reach the **NHS-recommended 2-hours of daily standing time** at your desk.

 Customisable Options



Features

- Dual Motor, 2 stage, adjustable width frame
- Budget Solution. Suitable for home office.
- Smartphone, Smartwatch and PC controllable
- Active Working® App – lifetime subscription
- Bluetooth and USB connection

Specifications

Colours	Black, White, Silver
Motors	2 (2-Stage Telescopic Legs)
Load Capacity	100kg
Height Adjustment	650-1120 mm (Frame only)
Supported Top Size	Width: 1000–1800 mm Depth: 600–800 mm
Sustainability Certification	ISO 14025 ISO 14040 EN 527-2 ISO 14044 ISO 21930
Low standby consumption	0.02W
Noise level	<48dB
Velocity/speed	30 mm/sec
Anti-Collision Safety	Yes
MOQ / Origin / Lead time	1 unit / EU / Next Day
Warranty	7- Years





ACTIVE 3+

Powered by Active Working® App

Lifetime Subscription



Transforming Workplace Wellness

Helping you stay active throughout the day with:

- ✓ One Click Sit-Stand Adjustments
- ✓ Smart Activity Coaching & Alerts
- ✓ Real-Time Performance Insights



ACTIVE 3+

ACTIVE 3+ is a next-gen L-Shaped **SMART Active Desk**. Integrates with any smartphone, smartwatch and PC. Allows you to set desk heights & timers to move, define goals track performance (incl. calorie burn) Our **Active Working® App** coaches you reach the **NHS-recommended 2 hours of daily standing time** at your desk.



Features

- Triple Motor, 3 stage, adjustable width frame
- Smartphone, Smartwatch and PC controllable
- Active Working® App – lifetime subscription
- Bluetooth and USB connection

Specifications

Colours	Black, White, Silver
Motors	3 (3-Stage Telescopic Legs)
Load Capacity	180kg
Height Adjustment	610-1270 mm (Frame only)
Sustainability Certification	ISO 14025 ISO 14040 EN 527-2 ISO 14044 ISO 21930
Low standby consumption	0.02W
Noise level	<48dB
Velocity/speed	32 mm/sec
Anti-Collision Safety	Yes
MOQ / Origin / Lead time	1 unit / EU / Next Day
Warranty	7- Years





Acoustic Pods & Booths

Yo-Yo POD® is a mobile acoustic booth – simple to move and reconfigure to add space, flexibility and purpose.

By being modular, it enables numerous layout configurations to be created thereby maximizing flexibility within an agile office. Designed by experts around key movement and sustainability principals.

Available in 2 seater & 4 seater formats:

All Aboard the Yo-Yo POD®

MOBILE & Modular Booths

Yo-Yo POD® comes in a “super mobile” range making it so simple to move and reconfigure. With excellent acoustic properties, it is the perfect acoustic booth to compliment any agile or collaborative workspace:



Mobile

Moves easily & safely, with lockable wheels



Modular

Re-configure any space, again and again



Multifunctional

Meetings, focus work, zoom calls or a room divider



2-Seater OPEN
L 2000 D 700 H 1920 SH 450



2-Seater FULLBACK
L 2000 D 750 H 1920 SH 450



2-Seater HALFBACK
L 2000 D 750 H 1920 SH 450



4-Seater OPEN
L 2000 D 1200 H 1920 SH 450



2-Seater FULLBACK
L 2000 D 1250 H 1920 SH 450

Battery Power

Yo-Yo POD® is available with a variety of portable battery power solutions which can power multiple devices simultaneously for up to 10 hours*: roof light/PIR, smartphones, laptops, monitor screens and other electronics.

CLOSED & Fixed Pods

For additional privacy, our closed pods come with glass doors and ventilation. Built in the UK to the highest industry specifications.



Delivery
7-8 Weeks



100% Recycled
Fabric



Sustainability
Certificate



Made in
Britain



2-Seater
L 2000 D 800 H 2100 SH 450



4-Seater
L 2000 D 800 H 2100 SH 450

**BACH
MANN**



Sustainable Fabrics

Whilst we can use any fabric when building your Yo-Yo POD®, we prefer to focus on those which have a genuine sustainability story.

fabrics made from post-consumer plastic and natural fibres.



Camira Eco Fabrics

X2



Oceanic



Quest



✓ ISO 9001

✓ ISO 14001



2-Seater / FULLBACK

Yo-Yo POD® 2-Seater / FULLBACK our unique **mobile, modular & multifunctional** acoustic booth. Move it around for **meetings, focus work, zoom calls** or as a **sound partition** to create a versatile, inclusive & agile workspace.

Features

- Award-winning **Mobile, modular & multifunctional** acoustic booth
- **Battery power** option, designed to move around an agile workspace
- Fabric made from **100% recycled materials**
- Excellent sustainability credentials & **manufactured in UK**

Specifications

Dimensions	W 200 x D 75 x H 192cm
Lighting	Motion sensor controlled LED light
Product Weight	150kg
User Weight Capacity	300kg
Warranty	5 Years



2-Seater / HALFBACK

Yo-Yo POD® 2-Seater / HALFBACK our unique **mobile, modular & multifunctional** acoustic booth. Move it around for **meetings, focus work, zoom calls** or as a **sound partition** to create a versatile, inclusive & agile workspace.

Features

- Award-winning **Mobile , modular & multifunctional** acoustic booth
- **Battery power** option , designed to move around an agile workspace
- Fabric made from **100% recycled materials**
- Excellent sustainability credentials & **manufactured in UK**

Specifications

Dimensions	W 200 x D 75 x H 192cm
Lighting	Motion sensor controlled LED light
Product Weight	135kg
User Weight Capacity	300kg
Warranty	5 Years



- ✓ ISO 9001 Quality Management Systems
- ✓ ISO 14001 Environmental Management Systems



2-Seater / OPEN

Yo-Yo POD® 2-Seater / OPEN our unique **mobile, modular & multifunctional** acoustic booth. Move it around for **meetings, focus work, zoom calls** or as a **sound partition** to create a versatile, inclusive & agile workspace.

Features

- Award-winning **Mobile , modular & multifunctional** acoustic booth
- **Battery power** option , designed to move around an agile workspace
- Fabric made from **100% recycled materials**
- Excellent sustainability credentials & **manufactured in UK**

Specifications

Dimensions	W 200 x D 70 x H 192cm
Lighting	Motion sensor controlled LED light
Product Weight	120kg
User Weight Capacity	300kg
Warranty	5 Years



4-Seater / FULLBACK

Yo-Yo POD® 4-Seater / FULLBACK our unique **mobile, modular & multifunctional** acoustic booth. Move it around for **meetings, focus work, zoom calls** or as a **sound partition** to create a versatile, inclusive & agile workspace.

Features

- Award-winning **Mobile , modular & multifunctional** acoustic booth
- **Battery power** option , designed to move around an agile workspace
- Fabric made from **100% recycled materials**
- Excellent sustainability credentials & **manufactured in UK**

Specifications

Dimensions	W 200 x D 125 x H 192cm
Lighting	Dual motion sensor controlled LED lights
Product Weight	200kg
User Weight Capacity	600kg
Warranty	5 Years



4-Seater / OPEN

Yo-Yo POD® 4-Seater / OPEN our unique **mobile, modular & multifunctional** acoustic booth. Move it around for **meetings, focus work, zoom calls** or as a **sound partition** to create a versatile, inclusive & agile workspace.

Features

- Award-winning **Mobile , modular & multifunctional** acoustic booth
- **Battery power** option , designed to move around an agile workspace
- Fabric made from **100% recycled materials**
- Excellent sustainability credentials & **manufactured in UK**

Specifications

Dimensions	W 200 x D 120 x H 192cm
Lighting	Dual motion sensor controlled LED lights
Product Weight	180kg
User Weight Capacity	600kg
Warranty	5 Years



GLASS DOOR



KABN® 2-SEATER

KABN® GLASS DOOR meeting collection offers comfort and privacy in beautifully upholstered large flat panels and rounded corners. The design helps to absorb unwanted sounds while the booth is in use.

Features

- Glass door wall
- Lights with PIR
- Matching fabric roof cover
- Available in full fabric options
- 5-Year Warranty

Options

- Ventilation
- Premium finish table top
- Power options
- TV bracket

- ✓ ISO 9001 Quality Management Systems
- ✓ ISO 14001 Environmental Management Systems



GLASS DOOR



KABN® 4-SEATER

KABN® GLASS DOOR meeting collection offers comfort and privacy in beautifully upholstered large flat panels and rounded corners. The design helps to absorb unwanted sounds while the booth is in use.

Features

- Glass door wall
- Lights with PIR
- Matching fabric roof cover
- Available in full fabric options
- 5-Year Warranty

Options

- Ventilation
- Premium finish table top
- Power options
- TV bracket



- ✓ ISO 9001 Quality Management Systems
- ✓ ISO 14001 Environmental Management Systems





Yo-Yo WALL

Mobile acoustic wall panel, made using highly effective sound dampening materials. Available in **multiple formats** with a variety of options and features. **Modular functionality** making it easy to **swap out and store** features within the unit.

Features

- Multiple fitting options on either side
- **Integrated storage** for a variety of board items
- Recessed Pull-handle
- Lock anti-rotate castors
- Available in **full fabric options**

Options

- **Battery powered**, with quick and easy docking. 5 – 9hr battery life. USB-A and USB-C fast charging up to 6 devices
- Optional emergency mains lead charge
- With or without **Monitor** (up to 43"). HDMI , WiFi, LAN RJ45
- Removable laptop shelf
- Removable pen shelf
- **Whiteboard / magnetic whiteboard**





Full Media Option

Key Features

- Acoustics panels filled with sound dampening material.
- Locking castors.
- Loop pull handle.
- 4m Orange mains power lead.
- Internal 4 Gang power module.
- Available in various material options.
- Optional Battery powered 7-9~ hours run time between Charges .
- Optional pull out drawer for Battery Unit OR Storage - Optional Lock.
- Optional Monitor Bracket (Monitor available on request).
- Optional Face mount power module - 3 pin socket, fast charging USB-A + C and HDMI port.
- Optional removable laptop/writing shelf, Fitted on either side to the left or right, or both.
- Optional removable pen/remote shelf, Fitted on either side to the left or right, or both.
- Optional (non-monitor side) - Removable magnetic whiteboard with small pen tray.
- Optional Storage box for magnetic whiteboard.



YO-YO WALL®



Magnetic Whiteboard Option

Swappable magnetic whiteboard

Fixed small pen shelf

Pull handle

Interchangable shelf location
pen/remote shelf OR
Writing Shelf



Configure to suit your needs

Monitor

Cable port
OR
Power module
3 pin socket
Fast charge
USB - A and C

Acoustics panels



Media Option

Storage box

Interchangable shelf location
laptop/writing shelf OR
remote shelf

Pull out storage drawer,
for battery when specified

Locking castors



Acoustic Only Option

Sustainable Fabrics



Whilst we can use any fabric when building your Yo-Yo POD®, we prefer to focus on those which have a genuine sustainability story.

We source most of our fabrics from **Camira**, a British company that produces fabrics globally. We hold stock of **X2**, **Quest** and **Oceanic** sustainable fabrics made from post-consumer plastic and natural fibres.

Key Benefits



Environmental Sustainability

By using post-consumer plastic waste, **Camira** is reducing the amount of plastic waste that ends up in landfills and oceans. This helps to conserve natural resources and reduce greenhouse gas emissions.



Durability

Can withstand wear and tear and are less likely to need replacing. This reduces the amount of waste generated from discarded fabrics.



Aesthetics

Available in a variety of colours and textures, allowing for customization and versatility in design.



Performance

Stain resistance, flame retardancy, and easy cleaning.



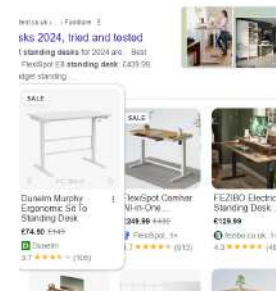
Health and Safety

Produced using non-toxic materials and processes, making them safer for people and the environment.



camira

X2



QUEST



OCEANIC





Warren Fitzpatrick
Partnerships Director

M: +44 (0)7944 565 721
E: warren@activeworking.com

Showroom:

Visit us @ 45 St.John Street, Clerkenwell, London, EC1M 4AN

Office:

Unit 1 Vulcan Court | Vulcan Way | Coalville | Leicestershire | LE67 3FW | UK