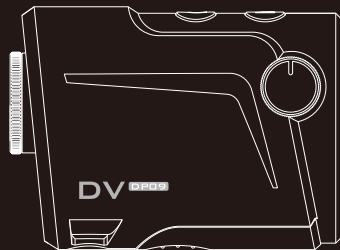




合肥英睿系统技术有限公司
InfiRay Technologies Co., Ltd.

电话/Tel: +86-400-998-3088
邮箱/Email: infiRayoutdoor@infiRay.com
网址/http: www.infiRayoutdoor.com

DV系列红外数码相机 Thermal Imaging Camera



目录

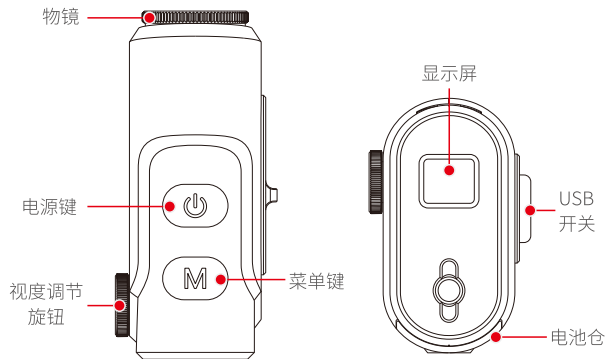
- 03 产品概述
- 04 电池安装
- 05 操作说明
- 10 规格参数
- 12 APP使用说明
- 13 注意事项
- 14 售后服务



Part 01: 产品

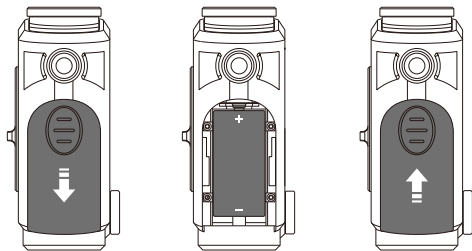
产品概述

DV系列是一款小型红外数码相机，具有红外热成像功能，体积小、功耗低，可与手机连接进行拍照、摄像。



电池安装

- ◎ 向后推动电池仓盖，取下电池仓盖；
- ◎ 将1节CR123电池按电池仓内的电池安装标识装入DV，即正极在前、负极在后；
- ◎ 将电池仓盖向前推动，合上电池仓盖。



特别说明

- ★ 本机仅适用3.7V电池；
- ★ 连接手机可以为DV供电，无法为电池充电。

操作说明

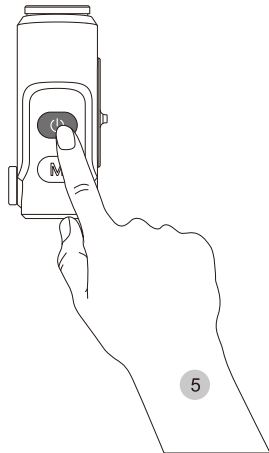
1. 开关机

关机状态下，长按电源键2秒，进入开机画面，热像仪开机；
开机状态下，长按电源键2秒，进入关机倒数画面热像仪关机。



2. 待机

在主界面下，短按电源键，实现待机功能（关闭显示屏，主芯片待机），再次按电源键唤醒，进入开机状态。

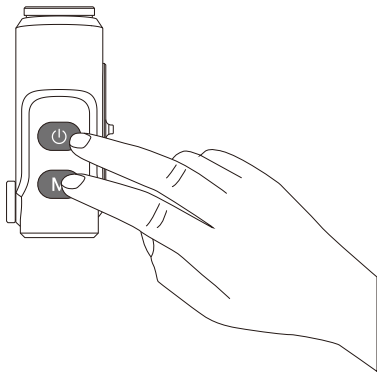


3.状态显示

开机状态下,正常显示界面,在界面的左上角显示常规状态信息,包括放大倍数、亮度等,右上角显示电池电量信息等。

4.快门校正

当图像劣化时,可以通过手动校正进行改善。
主界面下,同时短按电源、菜单键,进行手动快门校正。



5.快捷菜单

在主界面下,循环短按菜单键,依次进入快捷菜单1-快捷菜单2-快捷菜单3-返回主界面。进入快捷菜单后,在屏幕中央显示当前图像模式/放大倍数($\times N$)/屏幕亮度(图标N)的状态信息,短按电源键对当前状态进行循环切换。

快捷菜单1:进行图像模式的循环调节,有白热、黑热、红热、伪彩4种;



白热



黑热

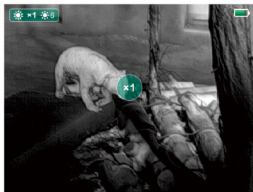


红热



伪彩

快捷菜单2:进行放大倍数的循环调节,依次为×1-×2倍放大;

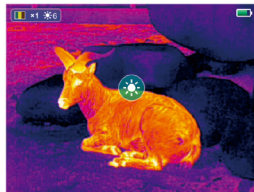


1倍



2倍

快捷菜单3:进行屏幕亮度的循环调节,依次为1-6档;



B1



B2



B3



B4



B5



B6

规格参数

产品型号	DP09
分辨率	256×192
像元尺寸	12μm
镜头	9mm
视场角	19.6°×14.7°
NETD	≤50mk@25°C, F#1.0
帧频	25Hz
工作温度	-10°C~+50°C
温度修正	手动/自动
电池	700mAh
电子变倍	×1/×2
功耗	600±100mW
重量	<85g(不含电池)
外形尺寸	77mm×56mm×36mm
接口	Type-C



Part 02: APP

APP使用说明

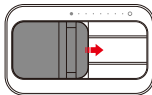
1. 安装软件

在华为、小米、谷歌、百度、腾讯和 360 的手机应用商城, 搜索“艾睿天眼”, 下载并安装APP。



2. 连接设备

滑动打开“DV红外数码相机”的USB Type C接口, 插入手机的Type C接口, 弹出软件使用提示, 点击确定, 即可使用。



连接手机后, DV自动进入开机状态, DV上的按键功能无法使用。



注意事项



请勿直视太阳等高强度辐射源



请勿碰撞镜头



请勿湿手触摸设备和USB接口



请勿弯折或损坏各连接线缆



请勿在看到红色时继续拧出镜头

+86-400-998-3088

服务电话

+86-535-3410604

传真

infrared@infrared.com

电子邮件



www.infrared.com

CONTENTS

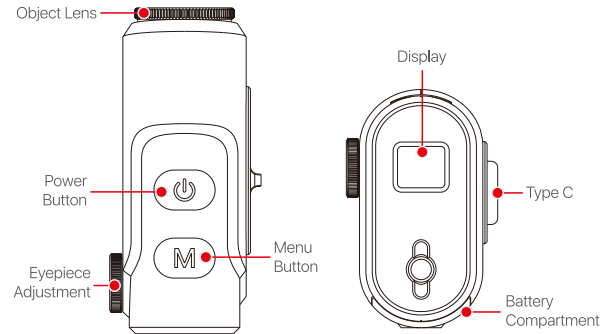
- 17 DESCRIPTION
- 18 BATTERY INSTALLATION
- 19 OPERATION
- 24 SPECIFICATION
- 26 APP INSTRUCTIONS
- 27 CAUTIONS
- 28 SERVICE



Part 01: DV Series

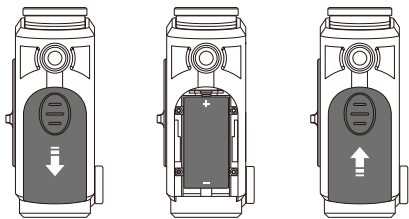
DESCRIPTION

The DV series is a small-sized thermal imaging camera. Connecting with the smart phone for photographing and video recording, this device features with infrared thermal imaging, small size and low power consumption.



BATTERY INSTALLATION

- As show in the picture, push backward the battery compartment cap to remove it.
- Then, insert a CR123 battery into the battery compartment as labelled in the picture, anode in the front and cathode in the back;
- Push the cap forward until the cap closes.



Notice

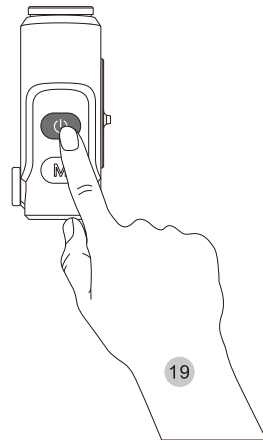
- ★ This device only supports 3.7V batteries;
- ★ Connecting with smart phone will power the device, but the installed battery cannot be charged.

OPERATION

1.Power On/Off

Press and hold down the **Power** button about 2 seconds until the splash screen appears, the device is turned on.

Turn the device off after use with a long press of the **Power** button about 2 seconds until the countdown on the screen disappears.



2. Standby Mode

In the home screen, short press the **Power** button to enter standby mode (screen turns off and chipset standby).

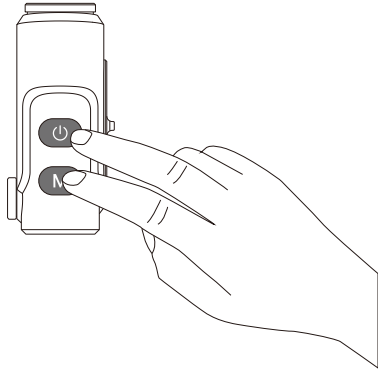
Press the **Power** button again to wake up the device.

3. Status Bar

Status bar is located at the top of home screen. Status including magnification, brightness etc. are on the top left and battery status on the top right.

4. Calibration

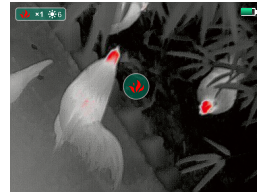
When the image is degraded or uneven, it can be improved by calibration. In the home screen, short press the Power and Menu Button to calibrate manually.



5. Shortcut Menu

In the home screen, short press the **Menu** button to switch among following modes: Shortcut 1 – Shortcut 2 – Shortcut 3 – Home screen. In the shortcut menu interface, the status information of the current menu is indicated as icons or numbers on the center of the screen. Short press the **Power** button to circle the current state.

Shortcut 1: Switch the Imaging Mode among: White Hot – Black Hot – Red Hot – Pseudo Colour



White Hot



Black Hot

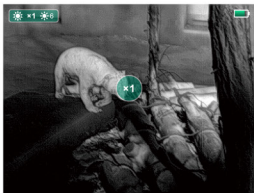


Red Hot



Colour

Shortcut 2: Switch the E-zoom among x1 – x2.

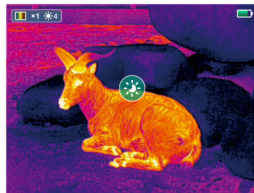


x1



x2

Shortcut 3: Switch the Screen Brightness among six levels.



B1



B2



B3



B4



B5



B6

SPECIFICATION

Model	DP09
Resolution	256×192
Pixel size, μm	12
Object lens, mm	9
Field of view, $^{\circ}$	19.6×14.7
NETD, mk	$\leq 50 @ 25^{\circ}\text{C}, \text{F}\#1.0$
Frame refresh, Hz	25
Operating temp., $^{\circ}\text{C}$	- 10 ~ + 50
Temp. correction	Manual / Auto
Battery type	700mAh
Digital zoom, \times	1 / 2
Consumption, mW	600 \pm 100
Weight(without battery), g	< 85
Dimension, mm	77 \times 56 \times 36
USB type	Type-C



Part 02: APP

APP INSTRUCTIONS

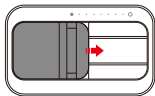
1. Install APP

Search and download Android App Search in Google Play.

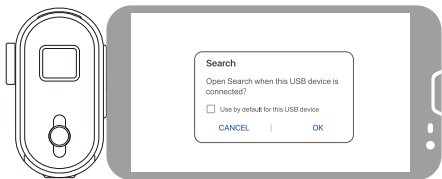


2. Connect to Device

Slide on the Type C port of DV camera, and insert it into smart phone.



Once connected, the device turns on automatically. Meanwhile, there is a prompt appear on smart phone as shown in the picture below. Click "Ok" to operate the device via the screen of smart phone, meanwhile disabled buttons on your device.



CAUTIONS



Avoid look directly at high radiation sources (such as solar).



Avoid collision with camera.



Don't touch the device and USB port with wet hands.



Don't bend or damage relevant cables.



Don't unscrew the lens when seeing the red ring.

SERVICE

+86-400-998-3088

Tel

+86-535-3410604

Fax

infrared@infrared.com

Email



www.infrared.com