

## 8 Update

The scanner can be updated to keep you stay current with the latest development of diagnosis. This section illustrates how to register and update your scan tool.

▶ To update your scanner, please follow the three steps as below:

Step1: Obtain an ANCEL ID.

Step2: Register the product with the product serial number.

Step3: Update the product by the update application AncelAssist.

For step 1 and 2, you can also go to our site with the link below.

Step 1: <https://anceltech.com/support/download>

Step 2: <https://anceltech.com/support/download>

### 8.1 Create an ANCEL ID

#### 8.1.1 Register through Website

If you are new to ANCEL, please register on [www.anceltech.com](http://www.anceltech.com) and create an ANCEL ID first. If you have installed the update application AncelAssist, please refer to the registration guide on 8.1.2.

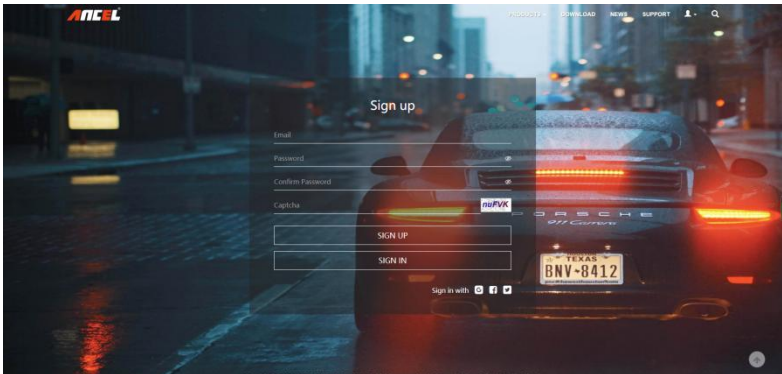
▶ 1. To register through website:  
To create an ANCEL ID and register your scan tool  
a. Visit our site [www.anceltech.com](http://www.anceltech.com) and then select **Register**.



Figure 8-1 Sample Register Screen

2. Enter your own email address create a unique password, confirm password, enter the captcha and then click “sign up” , an email would be sent to your box, check inbox or your spam box, click the link in the email to activate your account, register completed.

When your ID has been created, you are allowed to view all programs associated with your tool, download updates, edit your profile, submit feedback and join our community to share your ideas and your stories about our products. Note: Please always remember your ANCEL ID and Password, as it's important for you to manage your product and updates.



Mail has been sent. Please click on the link to activate it in 20 minutes.

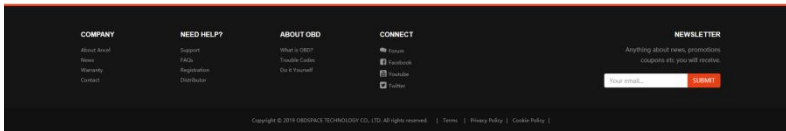


Figure 8-3 Sample Registration Form Filling Screen

---

### IMPORTANT

User name is limited to Email address and please always find the Activate Link in your registered email.

---

2. An **Account activated** message will appear if you activate it successfully.

---

### IMPORTANT

Please always remember your ANCEL ID and Password as it's important for you to manager your product and updates.

---

- Click **Login** at the top right of the website or at the lower side of home page. Skipping to the login page. Just input your ANCEL ID and Password to sign in.

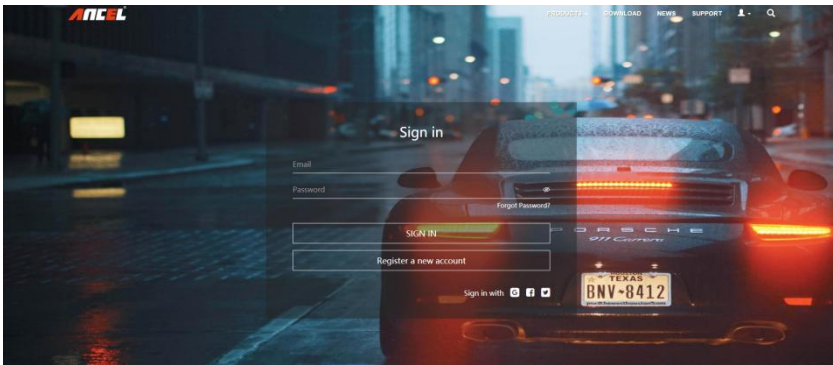
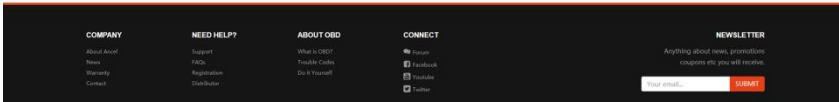


Figure 8-4 Sample Sign in Screen

- When log in successfully, the **Profile Center** will let you edit your profile. This platform enables you to modify personal information or reset the password.

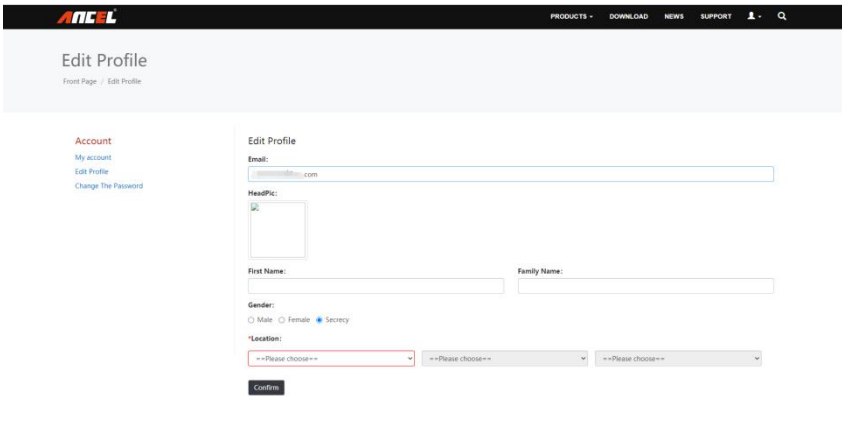


Figure 8-5 Sample Member Center Screen

5. If you forget your password, just click **Sign in** at the top right of the website, then click **Forget password**. You are required to input your registered email address, verification code, new password and confirmed password, click **Reset password**.

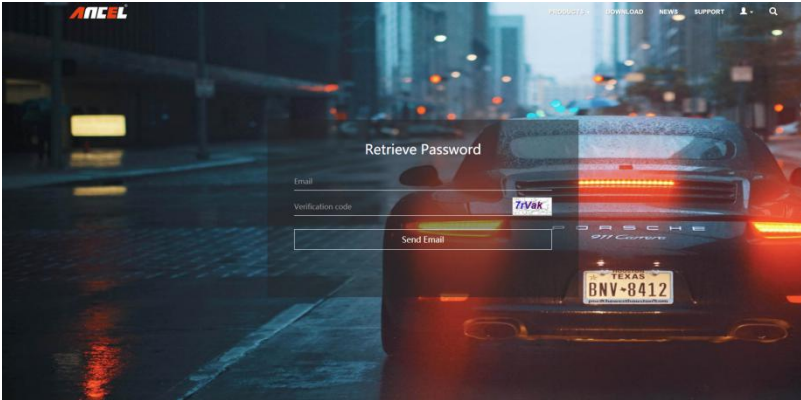


Figure 8-6 Sample User ID and/or Password Retrieve Screen

6. A **Password reset succeeded** message will appear if you reset password successfully. Now you are able to log in with your ID and the new password. If you want to change the password, please sign in with your user name and password, then select **My Profile/Reset Password**.

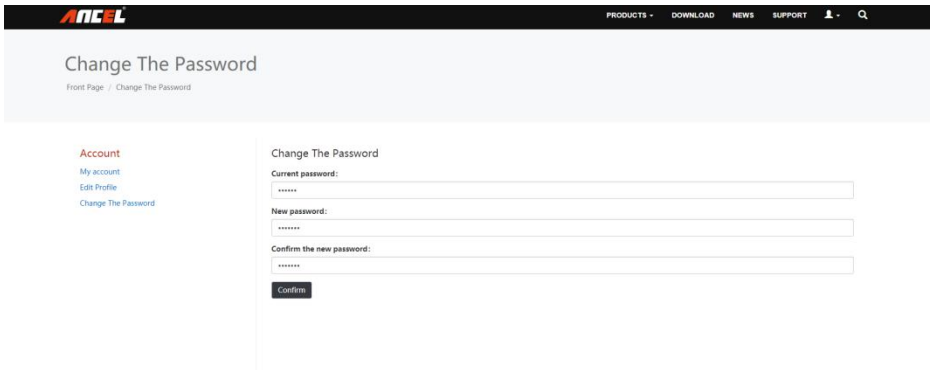


Figure 8-7 Sample Password Reset Succeeded Screen

## 8.1.2 Register with AncelAssist

You are also allowed to register and create an Ancel ID with the update client AncelAssist.

- ▶ To register through website:
  1. Visit our site [www.anceltech.com](http://www.anceltech.com) and go the **Download** page. Find your product model and click it to view the product profile.
  2. Click the application file. Follow instructions on computer screen to install the application and driver.

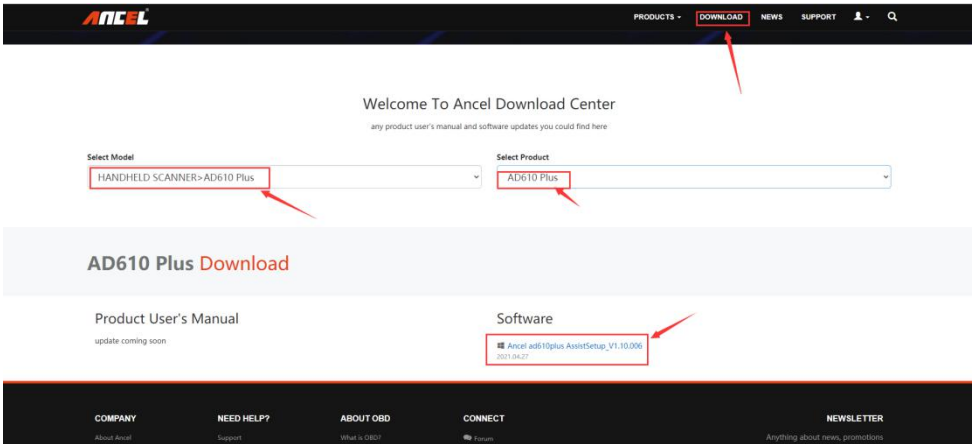


Figure 8-10 Sample AncelAssist Installation Screen

3. Double click the desktop  icon to launch the application.

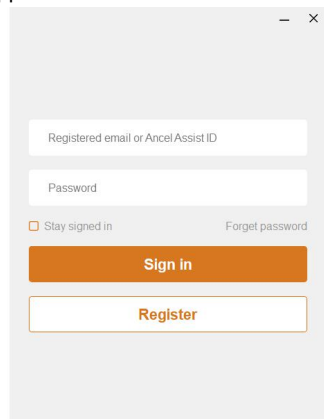


Figure 8-11 Sample AncelAssist Main Screen

4. Click **Register** button, a **Register** window will pop up. Enter your own email address and click “Send code” to find the verification code in your mailbox. Create a unique password, confirm password and then click “**Free registration**” to complete.

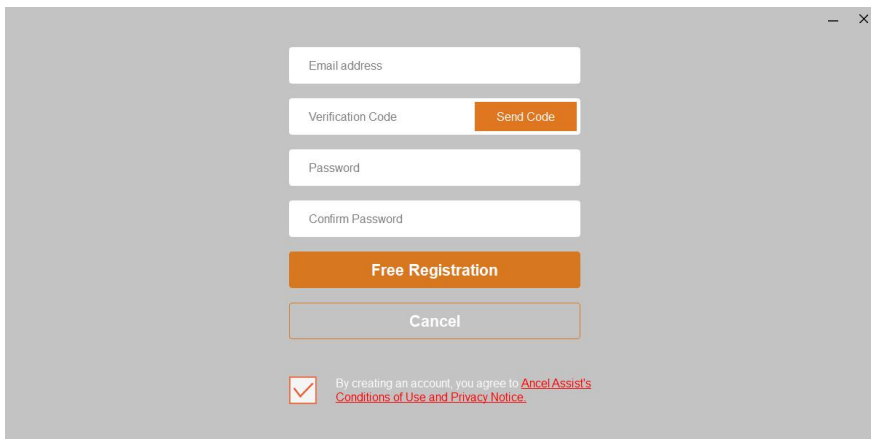


Figure 8-12 Sample Register Screen

5. A **Registered account is successful** message will appear if you registered successfully.

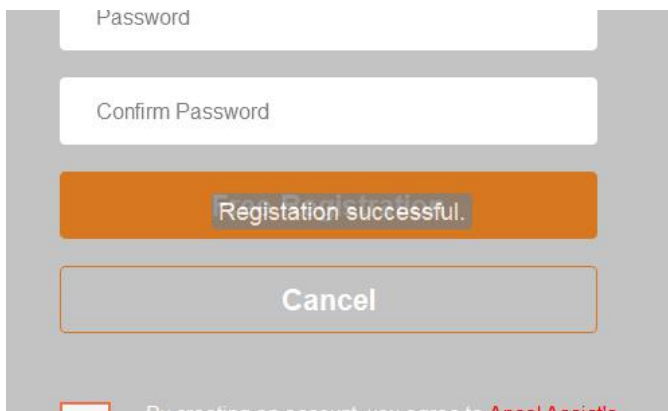


Figure 8-13 Sample Registration Success Screen

6. Click **Cancel**. It skips to the login page automatically. You can input your Ancel ID and Password to sign in.

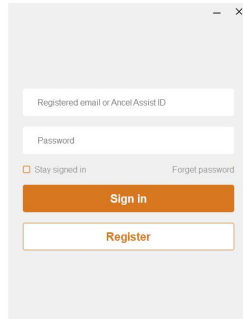



Figure 8-14 Sample Sign in Screen

## 8.2 Register Your Scanner

To register a scanner, you can either register on [www.anceltech.com](http://www.anceltech.com) or by the update PC application AncelAssist.

### 8.2.1 Register With AncelAssist

-  To register with AncelAssist:
1. Launch the PC application AncelAssist. Sign in with your Ancel ID/ registered email and password.

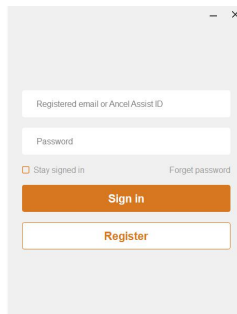


Figure 8-15 Sample Sign in Screen

---

#### NOTE

To check the serial number of a device, please boot it up, and select **Setting>About**. The serial number is right on the **About** page. You can also find the serial number on the back of main unit or memory card(SN file).

---

- Remove the memory card on the right side of the scanner, insert the memory card into the card reader, and port the card reader into the computer, Select **Activate** and input serial number to complete product registration. If you have multiple scanners to be registered, please enter all serial numbers you wish to activate.

Or you can also connect the scanner with your PC via USB cable, choose the Update icon and press the Enter Key on the scanner, then your serial number will be automatically acquired by the AnceAssist and please click Activate to complete.

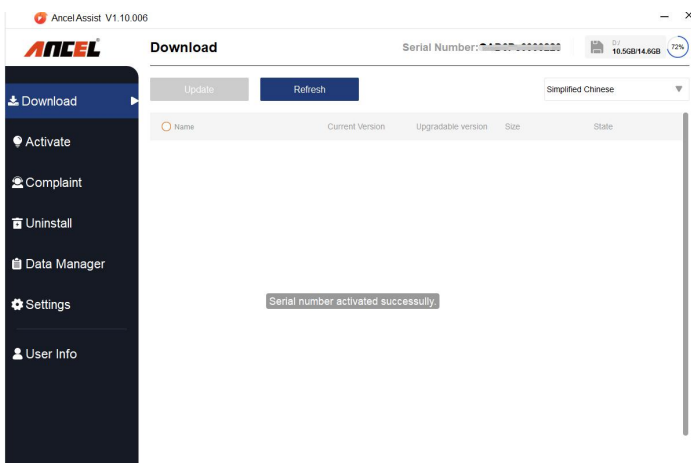


Figure 8-16 Sample New Product Activate Screen

## 8.2.2 Register Through Website

- Open [www.anceltech.com](http://www.anceltech.com) main page and click **Sign in**. Input your Ance ID/registered email and password.

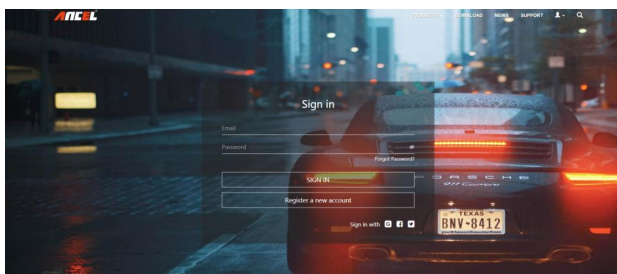


Figure 8-17 Sample Sign in Screen

- When log in successfully, the **Account Center** will show as below. This platform enables you to review the modify personal information or reset the password.



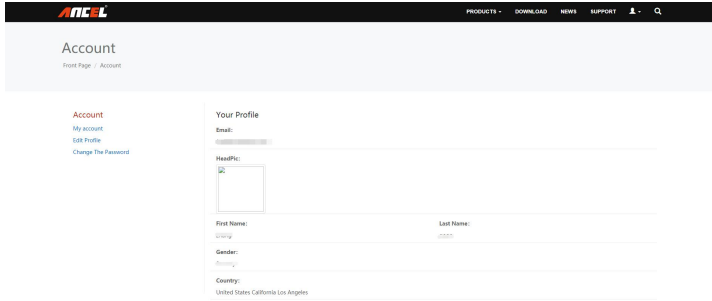


Figure 8-18 Sample Member Center Screen

3. To register a product, please click **Support** at the top right of the website. Input correct serial number and click the **Submit** button to complete product registration. Please repeat the process if you have more products.

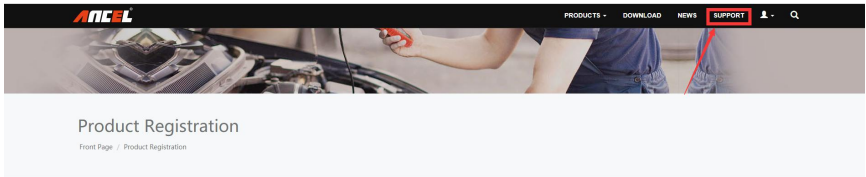


Figure 8-19 Sample New Product Registration Screen

## 8.3 Update the Scanner

To update scanner, you need the following tools:

- The scan tool
- PC application AnceLAssist
- PC or laptop with USB ports
- Internet service


To be able to use update tool, PC or laptop must meet the following minimum requirements:

- Operation System: Windows 7, Windows 8 and Windows 10.
- CPU: Intel PIII or better
- RAM: 64MB or better
- Hard Disk Space: 30MB or better
- Display: 800\*600 pixel, 16 byte true color display or better
- Internet Explorer 4.0 or newer

## NOTE

Before updating, please make sure your network works correctly.

Before updating, please make sure you have already created an AnceL ID.

 To update your scanner:

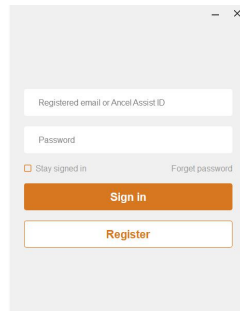


1. Double click the desktop icon

to launch the application.

2. Remove the memory card on the right side of the scanner, insert the memory card into the card reader, and port the card reader into the computer or connect the scanner with your PC via USB cable.

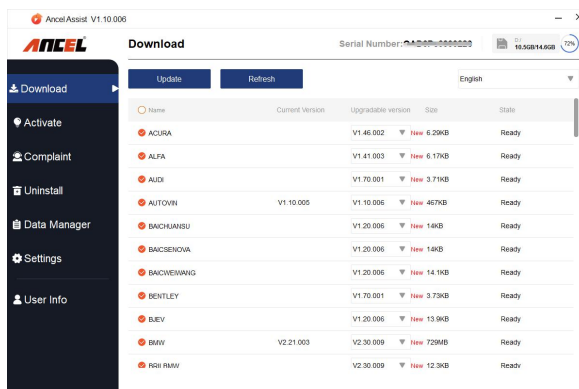
3. Log in with your AnceL ID and password.



The image shows a login window for AnceLAssist. It features a title bar with standard window controls. Below the title bar, there are two input fields: "Registered email or AnceLAssist ID" and "Password". Below these fields, there is a checkbox labeled "Stay signed in" and a link "Forgot password". At the bottom of the form, there are two buttons: a prominent orange "Sign in" button and a white "Register" button with an orange border.

Figure 8-20 Sample Sign in AnceLAssist Screen

4. You are lead to **Download** tap after you sign in, then all updates applicable to your scanner display.



The screenshot shows the "Download" screen of the AnceLAssist application. The top bar displays the application name "AnceLAssist V1.10.006" and the serial number "Serial Number: 0000000000000000". The screen is divided into a left sidebar with navigation options (Download, Activate, Complaint, Uninstall, Data Manager, Settings, User Info) and a main content area. The main content area has "Update" and "Refresh" buttons, and a language dropdown set to "English". Below this is a table listing available updates for various scanner models.

Name	Current Version	Upgradable version	Size	State
ACURA		V1.46.002	New 6.20KB	Ready
ALFA		V1.41.003	New 6.17KB	Ready
AUDI		V1.70.001	New 3.71KB	Ready
AUTOVN	V1.10.005	V1.10.006	New 467KB	Ready
BAICHUANBU		V1.20.006	New 14KB	Ready
BAICSHENHUA		V1.20.006	New 14KB	Ready
BAICWEIWANG		V1.20.006	New 14.1KB	Ready
BENTLEY		V1.70.001	New 3.73KB	Ready
BLEV		V1.20.006	New 15.9KB	Ready
BMW	V2.21.003	V2.30.009	New 729KB	Ready
HRRI RMV		V2.30.009	New 12.3KB	Ready

Figure 8-21 Sample Download Screen

5. Click the check box(es) in front of the software(s) you wish to update and then click the **Update** button on the top of the software(s) to download.

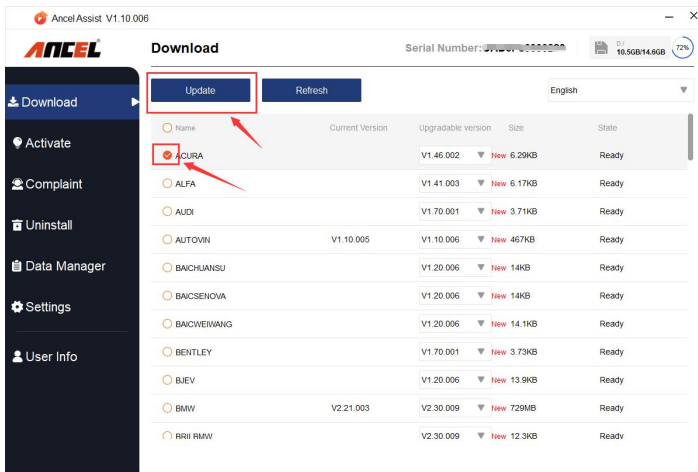


Figure 8-22 Sample Upgrade Check Screen

6. When **Update** button is clicked, it begins to download. And you can check the **Status**. If the Current Status shows Downloading, please do not close the update application.

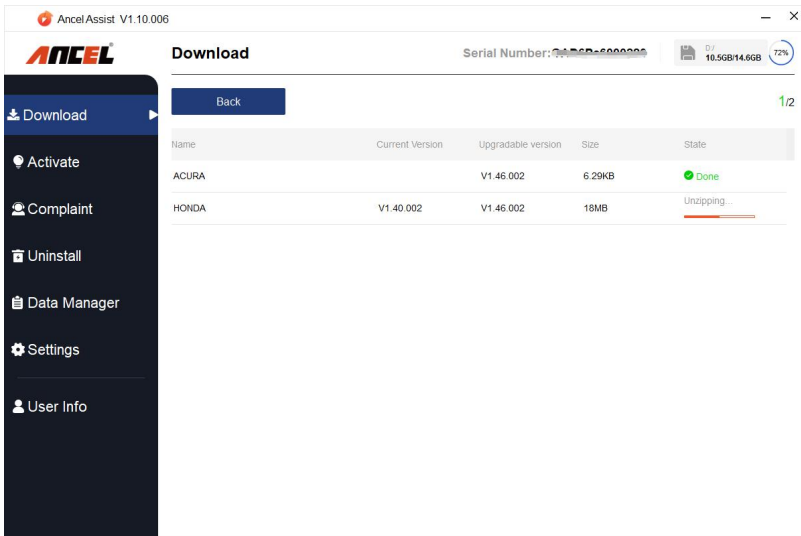


Figure 8-23 Sample Updating Screen

- When all the items are updated, an **“All software are downloads successfully!”** message displays. Please click OK to confirm.

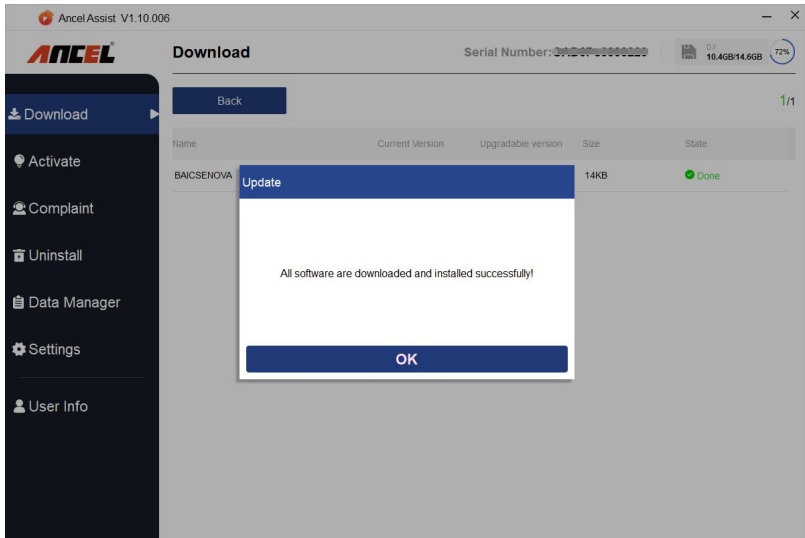


Figure 8-24 Sample Update Completed Screen

- Please click **Back** to review all the software status.

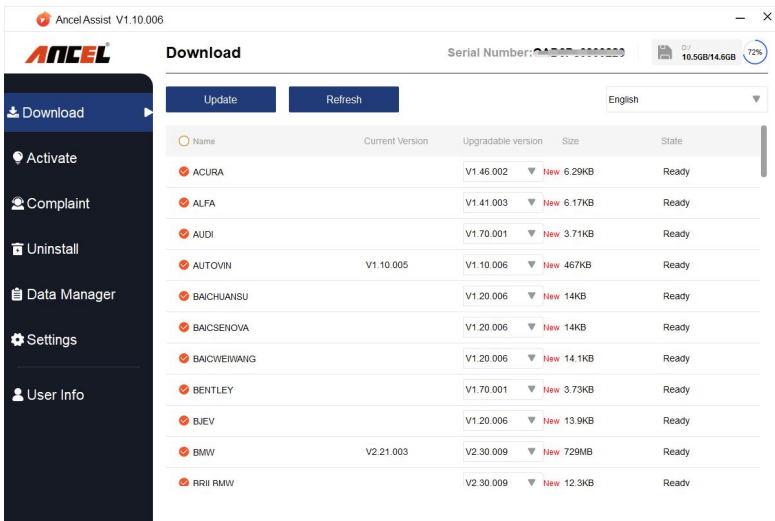


Figure 8-25 Sample Software Management Screen

**NOTE**

If “Update Failed” dialog comes up, it indicates that the software updates failed. Please check the network connection. If the problem still exists, please contact [support@anceltech.com](mailto:support@anceltech.com) or your local dealer for assistance.

- 9. Should you have any questions regarding the product, please click **Complaint**, fill in all required information and click **Submit** to send us your issue.

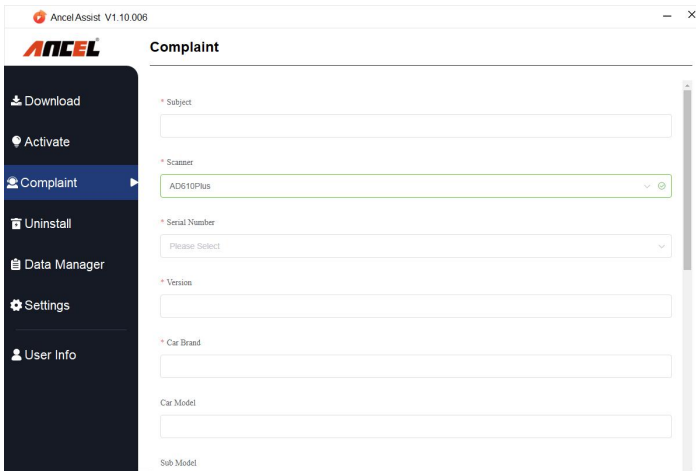


Figure 8-26 Sample Complaint Screen

- 10. To uninstall a software or all software, select them on the **Uninstall** tab and click the **Uninstall** button. And the uninstalled items can be found in the **Uninstall** screen.

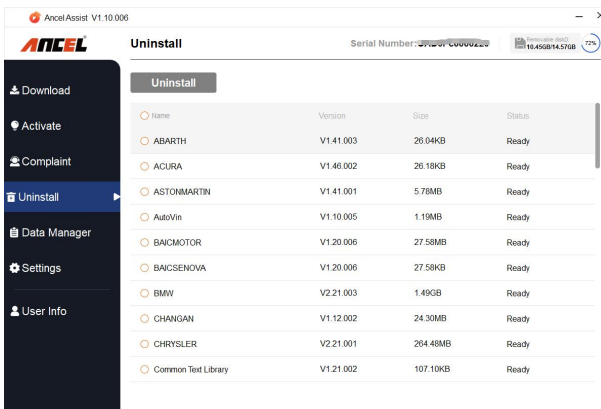


Figure 8-27 Sample Software Uninstall Screen

11. Please click **Setting** to change the update tool language.

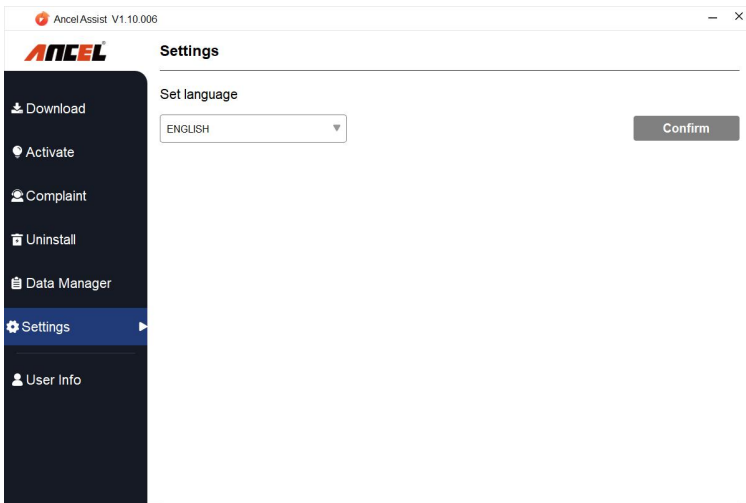


Figure 8-28 Sample FoxAssist Setting Screen

12. Please click **User Info** to view your personal information. To modify your personal information, just click the **Edit** and type in the message box and click **Confirm**. To help us provide better sales, please make sure that the telephone, email and country are correctly entered.

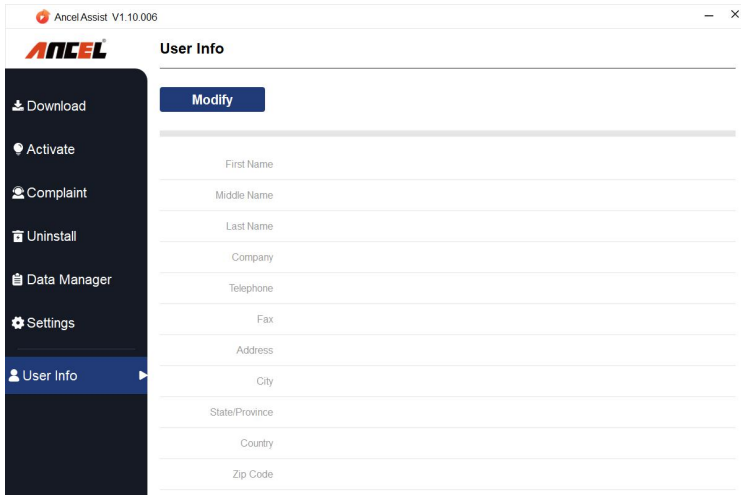


Figure 8-29 Sample User Information Screen