

# Tesla coil (spare parts) manual

**Step 1: prepare tools and consumables (tweezers, cross screwdriver, pointed nose pliers, hexagon socket, electric iron, solder wire, etc.)**

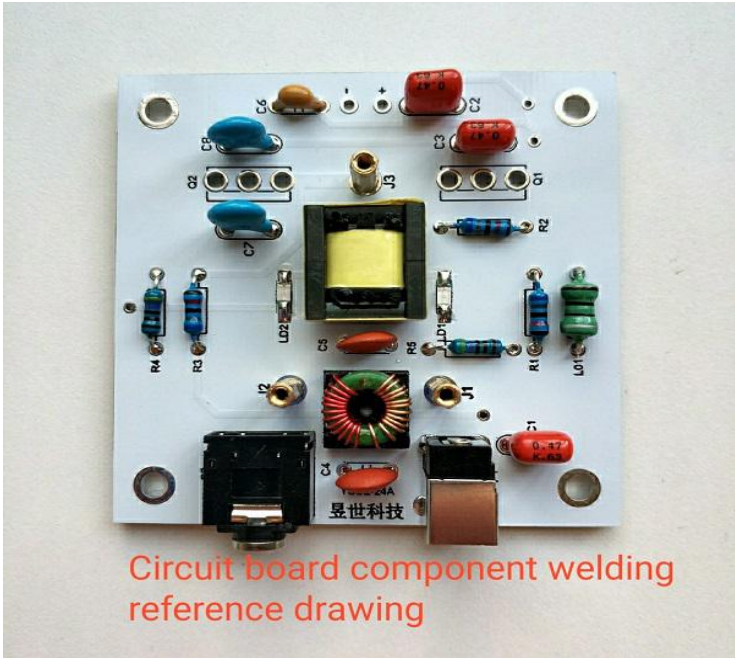
**Step 2: inventory component materials**

Serial number	Material type	Circuit diagram identification	Parameter / model	Number
1	Color ring resistance	R1,R2,R3	1/4W 68K	3
2	Color ring resistance	R4,R5	1/4W 4.7K	2
3	Coloring inductor	L01	1uH	1
4	Film capacitor	C1,C2,C3	474/50V	3
5	Porcelain capacitor	C4,C5	104/100V	2
6	Porcelain capacitor	C7,C8	102/200V	2
7	Monolithic capacitor	C6	10uF/50V	1
8	MOS Triode	Q1	TK100A10N	1
9	NPN Triode	Q2	2SC2078	1
10	light-emitting diode	LD1, LD2		2
11	Common mode inductor	L1		1
12	Isolated transformer	T1		1
13	3.5 Earphone socket	P2		1
14	5.0 Power supply socket	P1		1

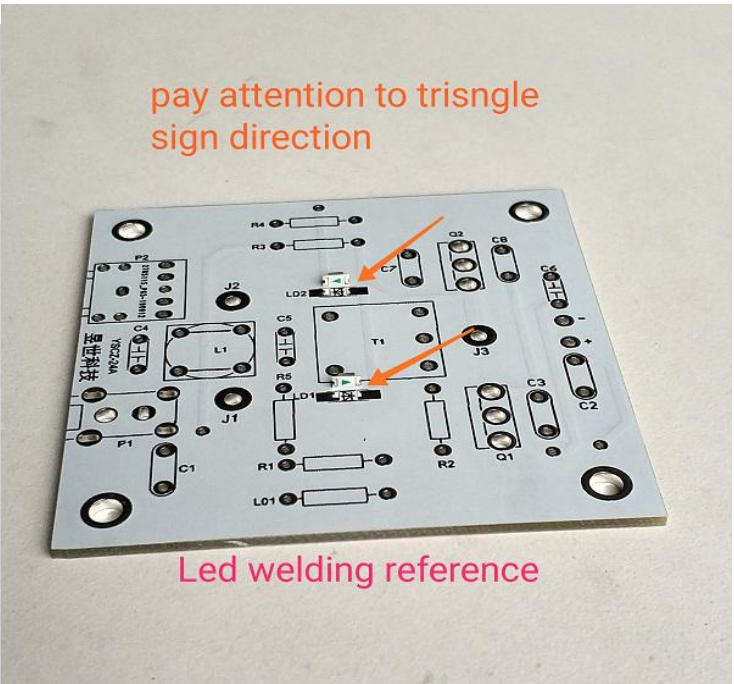
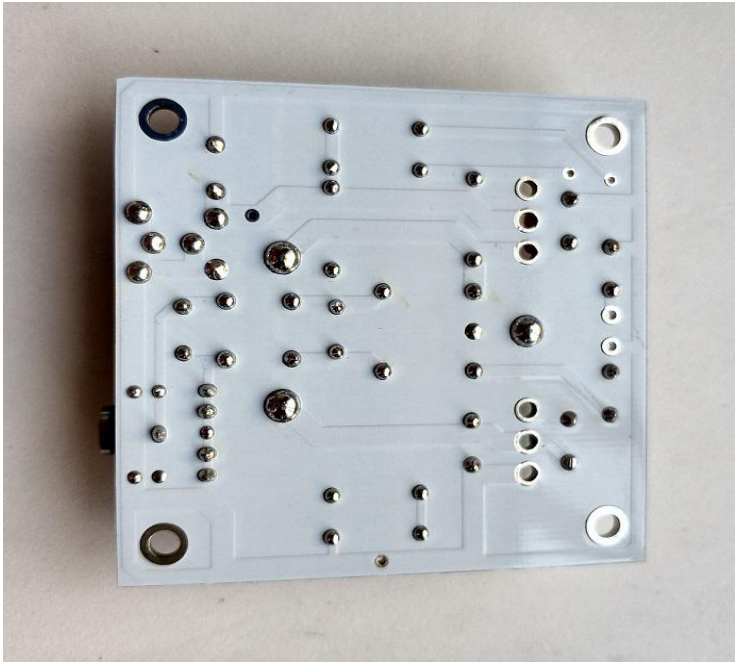
Serial number	Material type	Number
15	PCB Circuit board A	1
16	PCB Circuit board B	1
17	PCB Circuit board C	4
18	24V Fan	1
19	CPU Heat sink	1
20	M2.3*10 Self tapping screw	2
21	M2*10+3 Screw	3
22	M2*6 Screw	3
23	M3*6 Screw	8
24	M3*6 Copper screw	1
25	M3*8 Screw	2
26	M3*8+6 Screw	8
27	M3*10+6 Screw	4
28	M3*17 Six corner post	4
29	M3*9*0.5 Shim	8
30	Primary coil	1
31	Secondary coil	1
32	Neon lamp	1
33	Audio line	1
34	Discharge needle	1
35	Ion windmill	1
36	Ion rosette	1
37	Power Supply	1



**Step 3:**



Circuit board component welding reference drawing



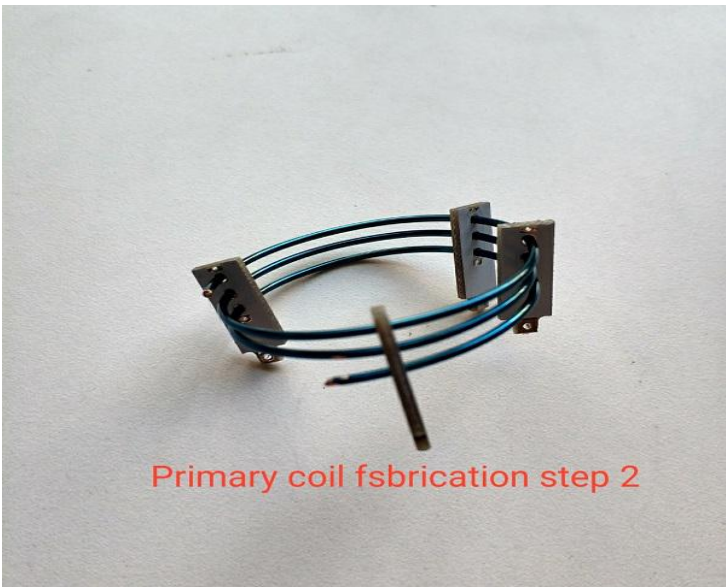
pay attention to triangle sign direction

Led welding reference

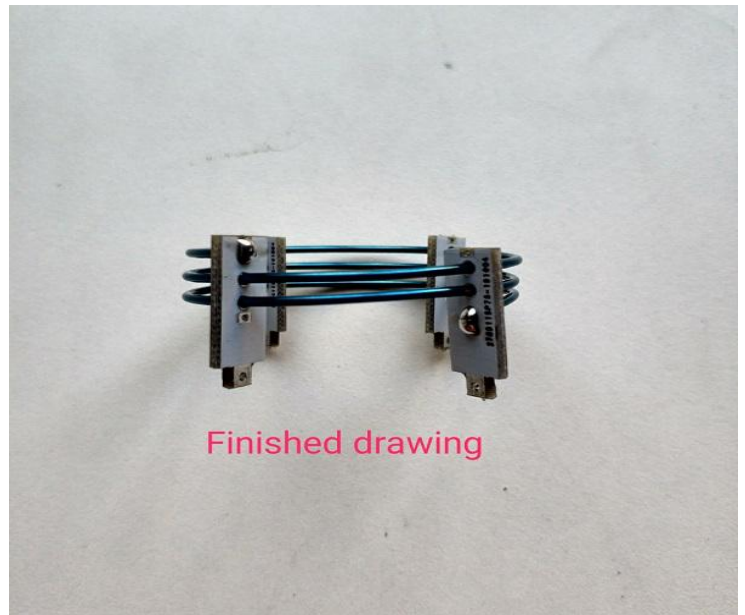
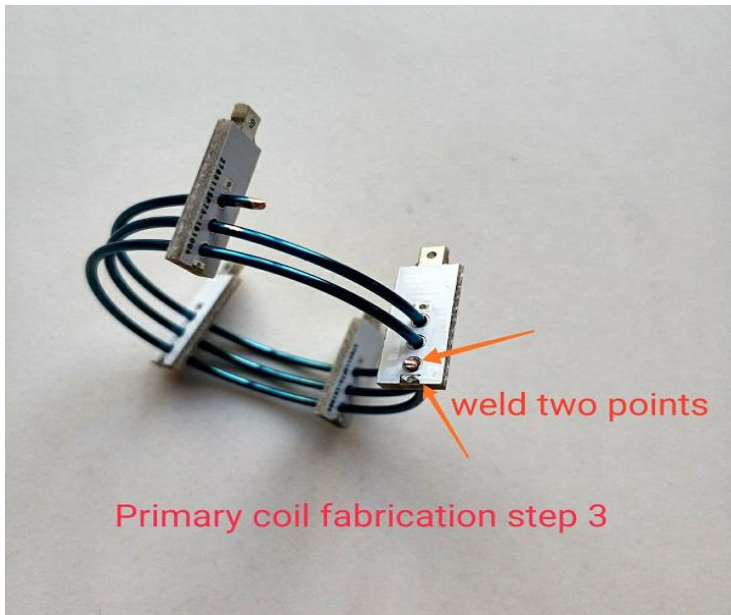
Step 4:



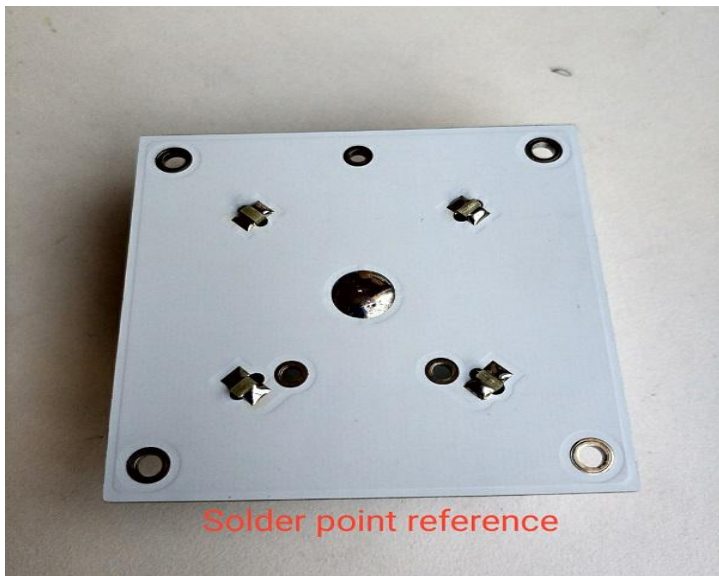
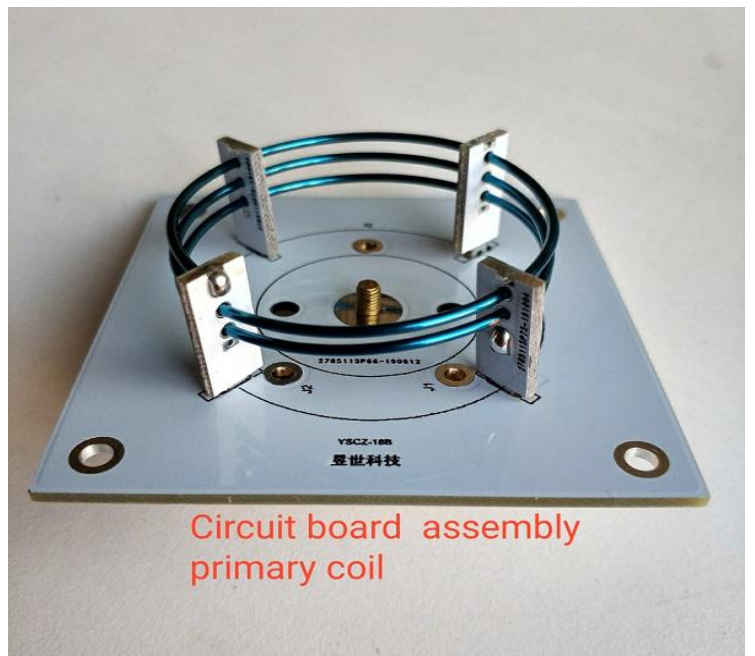
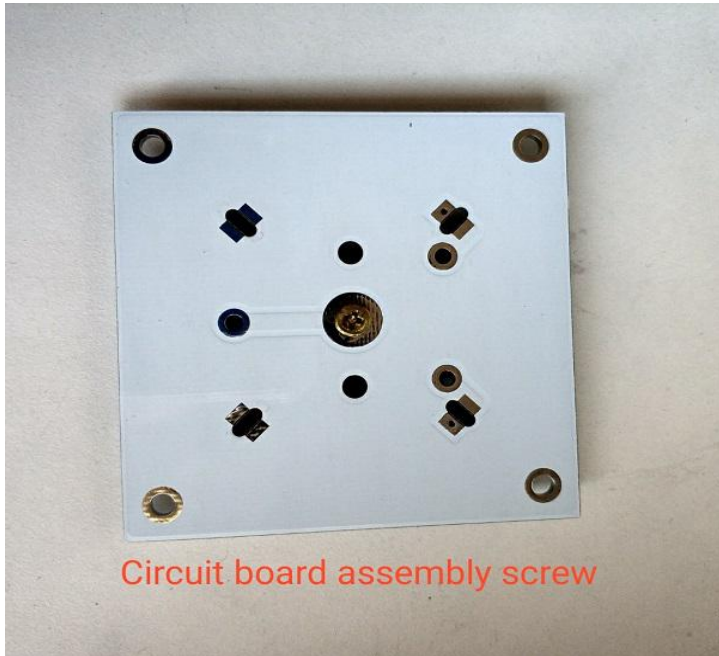
Primary coil fabrication step 1



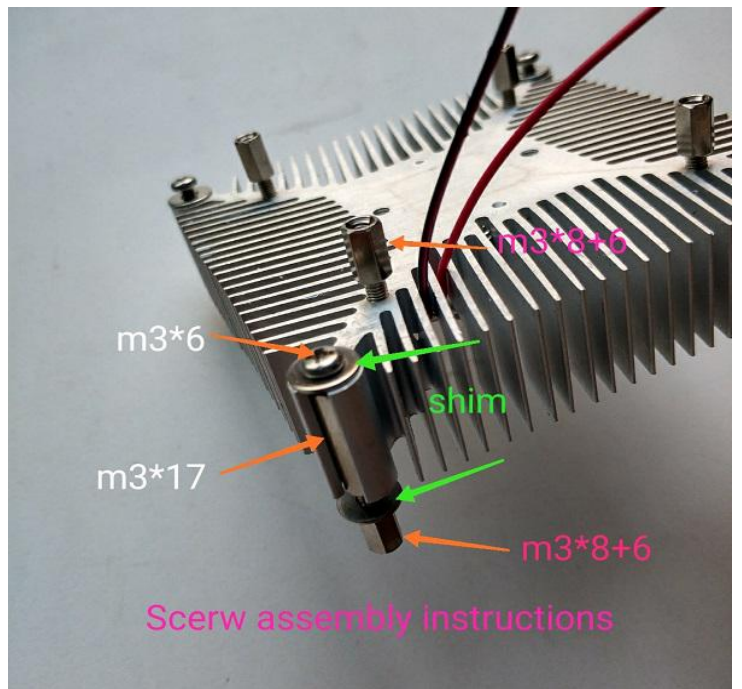
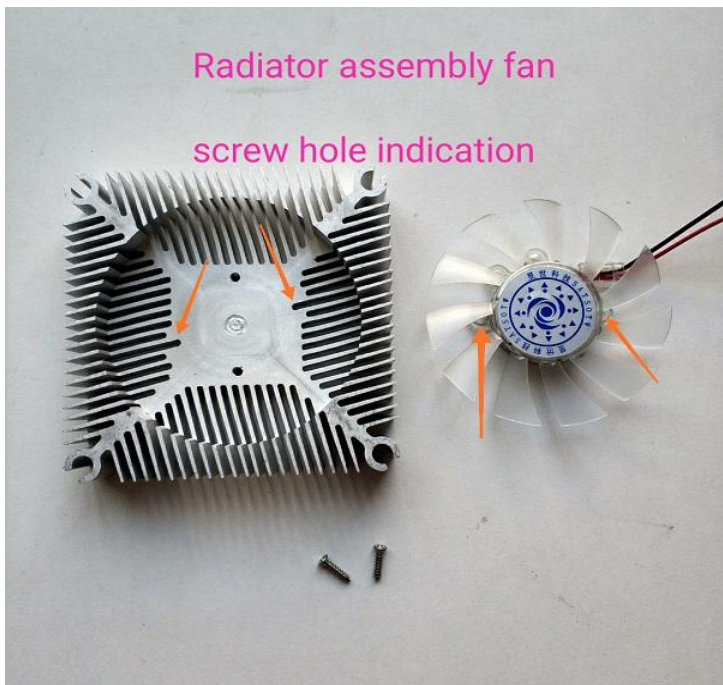
Primary coil fabrication step 2



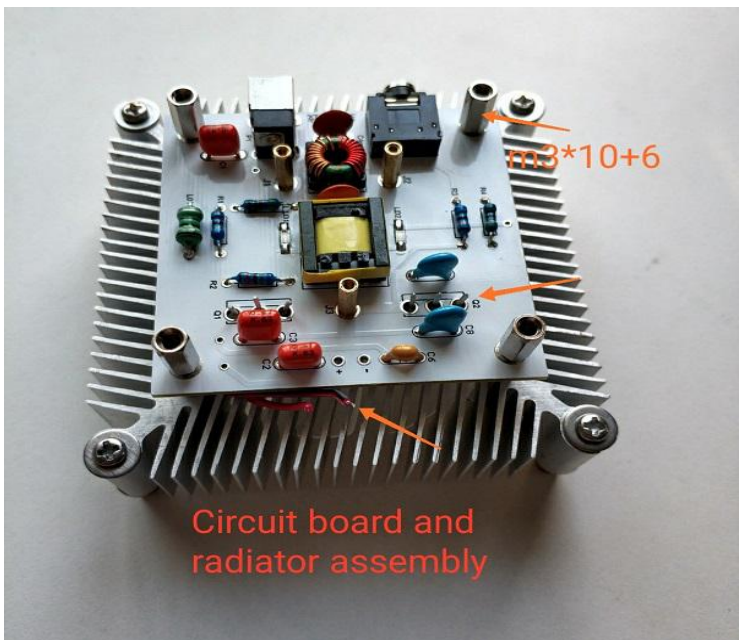
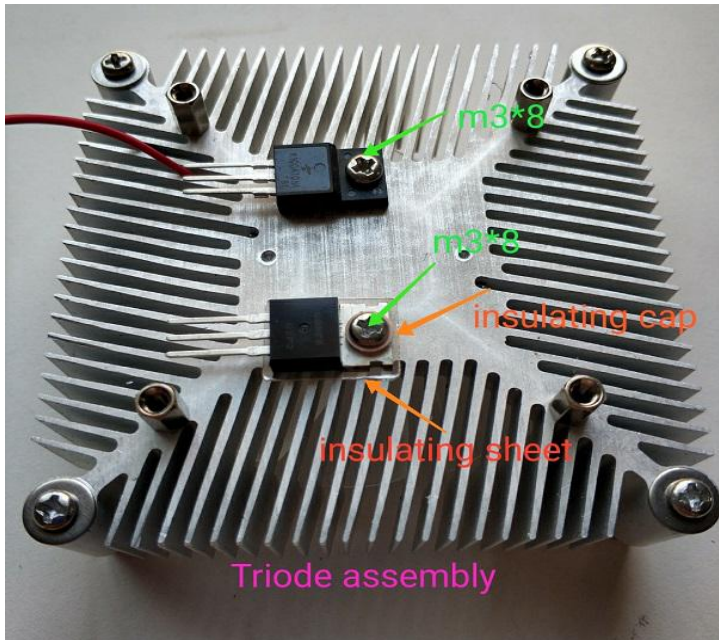
**Step 5:**



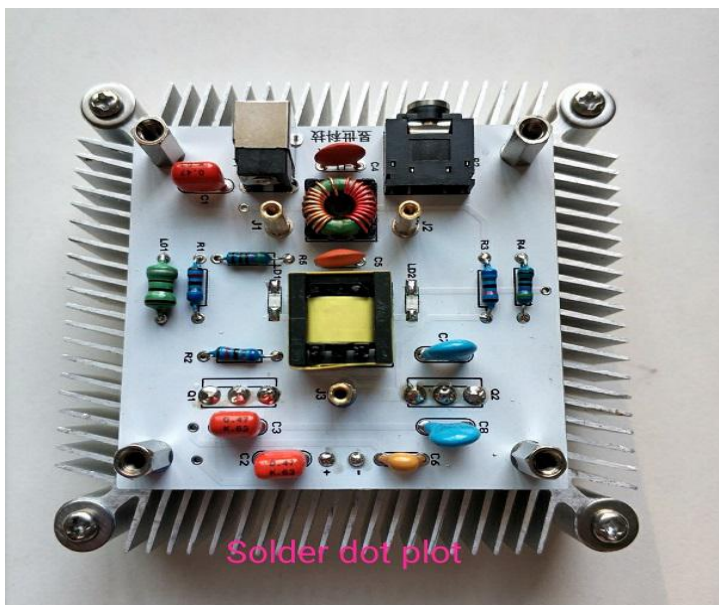
**Step 6:**



Step 7:



Step 8:



**Step 9:**

