

钥匙盒 使用说明书

型号:PL-B1



感谢您购买本产品,为了您使用方便,请仔细阅读本说明书后正确使用,并妥善保管。

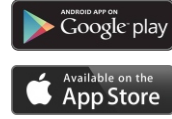
产品图解



APP下载

• 软件下载

- 1.用户扫描下方二维码根据系统下载APP并进行安装。
- 2.设备支持安卓4.0 或 IOS8.0 以上操作系统;蓝牙4.0 及以上。



初始密码和恢复出厂设置

• 初始按键密码

- 1.按下设备上的唤醒键 **O**。
- 2.按顺序输入按键初始密码解锁。

A B C D A B

• 恢复出厂设置

- 1.在盖子开启的状态下,即产品开锁状态。
- 2.长按唤醒键直到指示灯熄灭,恢复成功,密码变更为初始密码。
- 3.如果APP已经绑定此设备,在恢复出厂设置后APP需要重新绑定设备才能使用。

• 注意事项

- 1.在输入正确密码解锁后,如果没有及时打开盖子,设备会在5秒钟后自动上锁。
- 2.键盘密码如果5次输入错误后,设备会有3分钟的锁定时间,在3分钟之内不能再次输入密码。
- 3.用户在使用设备时,请在第一时间更改初始密码,设置新密码。

键盘解锁与指示灯

• 键盘解锁

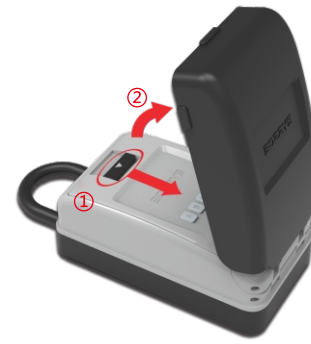
- 1.按下设备上的唤醒键。
- 2.按顺序输入初始密码ABCDAB或已修改的键盘密码即可解锁。(输入完成后指示灯显示绿色为解锁成功,指示灯显示红色密码错误解锁失败)

• 指示灯状态



• 使用操作

- 3.密码输入正确后,按图示操作 ① 下压开锁按钮, ② 即可打开盖子。



- 4.打开盖子后如果需要挂在某个地方,可以按下锁梁开锁按钮,拔出锁梁,再将设备挂在想挂的地方。



APP主界面

• APP主界



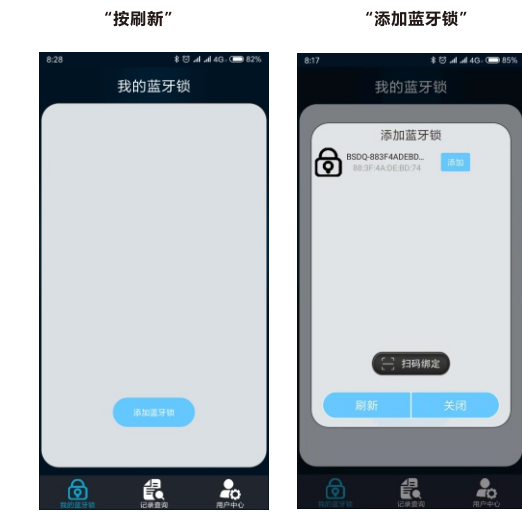
• 主界面介绍

- 1.首次打开APP后首先进入“登入”界面设置手势密码。
- 2.设置完手势密码,进入操作页面共有三个界面;分别是“我的蓝牙锁”、“记录查询”、“用户中心”。
- 3.“用户中心”界面可以关闭手势密码,其中“安全问题”是“登入界面”忘记手势密码时提供使用的一种提示方式。

APP绑定设备

• 初次绑定蓝牙挂锁

- 1.打开APP进入“我的蓝牙锁”界面。
- 2.按下蓝牙挂锁上的唤醒键 **O**。
- 3.点击“添加蓝牙锁”栏,点击“刷新”搜索到设备后点击“添加”,即完成蓝牙锁设备添加。



设备管理与解锁方式

• APP连接设备解锁

- 1.添加完成后,设备显示在“我的蓝牙锁”界面中。
- 2.按下蓝牙设备锁上的唤醒键 **O**。
- 3.点击 **O**, 连接上蓝牙设备锁后(**OO**), 再点击“开锁”完成解锁。如果是ios系统需要在“开锁”时输入初始密码。



• APP连接设备的初始密码

APP开锁初始密码：“123412”

注意：绑定后点击“管理”修改初始密码 (初始密码务必修改,防止陌生人绑定设备)。

• 设备设置界面

- 1.点击“管理”进入“设备管理”设置界面。
- 2.界面中可以设置设备的名称、密码、开锁方式、分享和删除。



• APP自动解锁

- 1.按下设备上的唤醒键。
- 2.点击 **O**, 连接上蓝牙挂锁(**OO**)。
- 3.点击“管理”,点击“自动开锁设置”开启完成自动开锁设置。
- 4.再次开锁时在蓝牙范围内,按下蓝牙设备锁唤醒键即可解锁。(必须在手机蓝牙开启和APP后台运行的条件下)



密码修改

• 修改蓝牙连接密码

- 1.手机APP连接设备。
- 2.点击“管理”进入设备管理点击“修改密码”进行修改 (该密码为蓝牙设备锁绑定密码)。

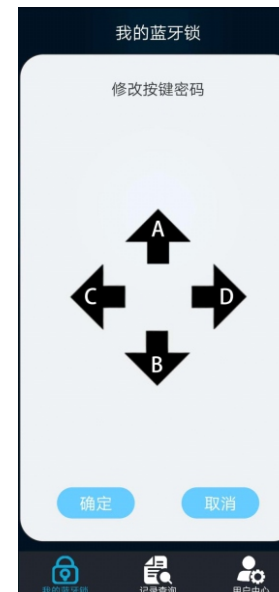
修改蓝牙连接密码



• 修改按键密码

- 1.手机APP连接设备。
- 2.点击“管理”进入设备管理点击“修改按键密码”进行修改。(只能用绑定的手机修改)

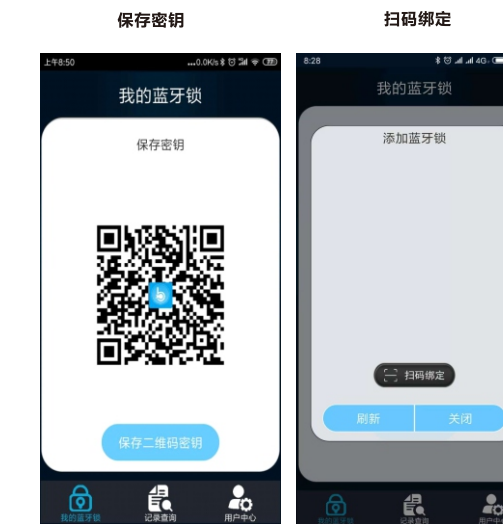
修改按键密码



APP密钥保存

• 保存密钥

- 1.手机APP连接设备。
- 2.点击“管理”进入设备管理点击“保存密钥”进入后显示二维码;(该密码为蓝牙开锁密码)。
- 3.用手机通过APP添加“扫码绑定”将设备的密钥分享给对方。



产品参数

项目	参数
品牌	BOZZY'S
产品名称	钥匙盒
产品型号	PL-B1
产品尺寸	锁体125mm*70mm*50mm
锁梁尺寸	直径φ6mm*高度40mm*包胶后φ8-9mm
壳体材质	铝合金
锁梁材质	不锈钢304、外部包胶为PVC
电池容量	400mAh
待机时间	3个月
续航次数	2000次
无线距离	2米
软件支持	Android 4.0或IOS 8.0以上操作系统

产品特点

- 1.按键密码解锁
- 2.蓝牙连接APP解锁和设置
- 3.自动上锁
- 4.内部锁梁手动开锁和解锁

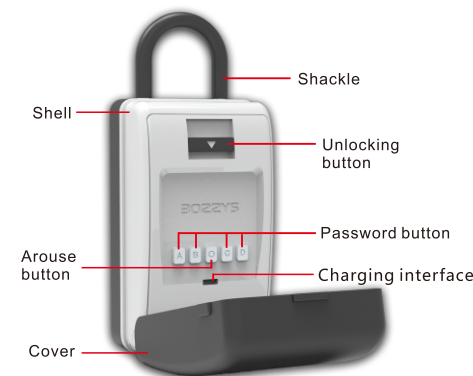
Key Box Instructions

Model:PL-B1



Thank you for purchasing this product. For your convenience, please read this manual carefully and use it properly and keep it in a safe place.

PRODUCT ILLUSTRATION



APP DOWNLOAD

App Download

- Scan the QR code below to download the app according to the mobile phone system and install it.
- Support: Android 4.0 or IOS8.0 or higher operating system; Bluetooth 4.0 and above.



INITIAL PASSWORD AND RESTORE

Initial button password

- Press the arouse button "O".
- Enter the initial password in order to unlock it.

A B C D A B

Restore factory settings

- The product is unlocked when the cover is open.
- Press and hold the arouse button until the indicator is off, the recovery is successful, and the password is changed to the initial password.
- If the APP is already bound to this device, the APP needs to re-bind the device to use after the factory reset.

Notice

- After unlocking with the correct password, if the cover is not opened in time, the device will automatically lock after 5 seconds.
- If enter the keyboard password incorrectly after 5 times, the device will be locked for 3 minutes, and the password cannot be entered again within 3 minutes.
- When using the device, please change the initial password and set a new password at the first time.

KEYBOARD UNLOCKING AND INDICATOR

Keyboard unlocking

- Press the arouse button.
- Enter the initial password "ABC DAB" or the modified keyboard password in order to unlock.
(After the input is completed, if the indicator light turns green, it means unlocking successfully, and if the indicator light turns red, it means incorrectly unlocked.)

Indicator status



Use operation

- After the password is entered correctly, ① press the unlock button, ② open the cover.



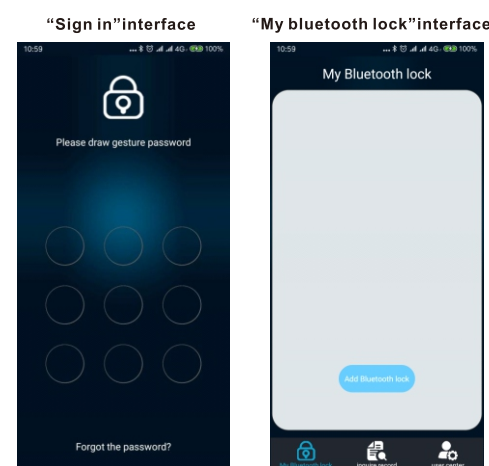
- If you need to hang somewhere after opening the cover, you can press the lock shackle unlocking button, pull out the lock shackle, and then hang the device where you want to hang it.

Unlocking button for lock shackle

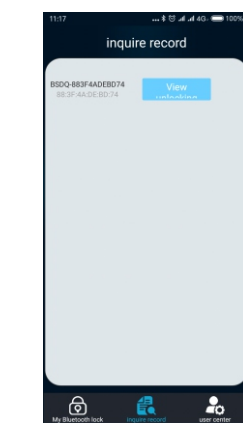


APP MAIN INTERFACE

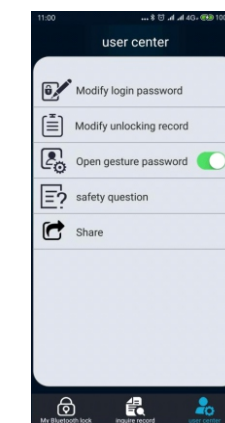
APP interface



"Record query" interface



"User center" interface



Main interface introduce

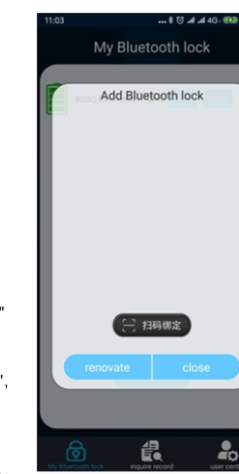
- After opening the app for the first time, firstly enter the "Login" interface to set the gesture password.
- After setting the gesture password, there are three interfaces on the operation page, they are "My Key box", "Record Query", "User Center".
- You can shut down the gesture password in "User center" interface. The "security question" is a way to provide a way to use the "login interface" when forgetting the gesture password.

APP BINDING DEVICE

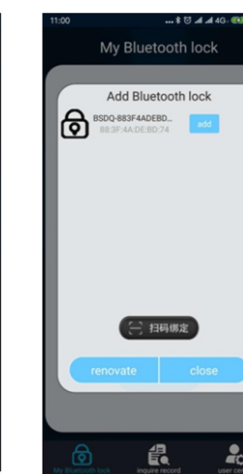
First time bind the Key box

- Open the APP, enter "My Key box" interface.
- Press the arouse button on your device "O".
- Click "Add Key box", click "Renovate", then click "Add" after searching for the device, complete the Key box device addition.

"Renew"



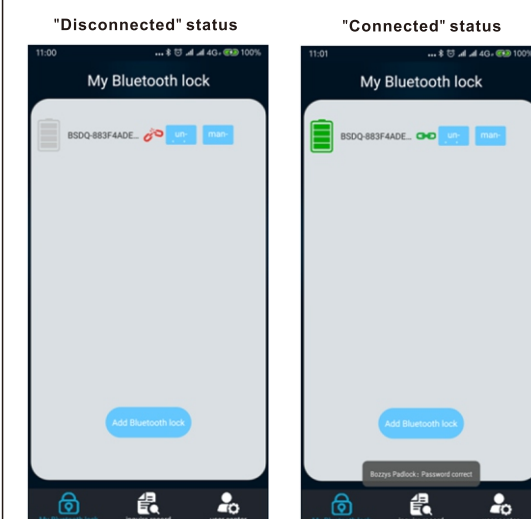
"Add bluetooth lock"



DEVICE MANAGEMENT AND UNLOCKING WAY

APP connected device unlocking

- After connected, the device displays in "my Bluetooth lock" interface.
- Press the arouse button on the key box.
- Click to connect the Bluetooth then unlocking the lock.
If your phone is ISO system, then you need enter the initial password before unlocking.



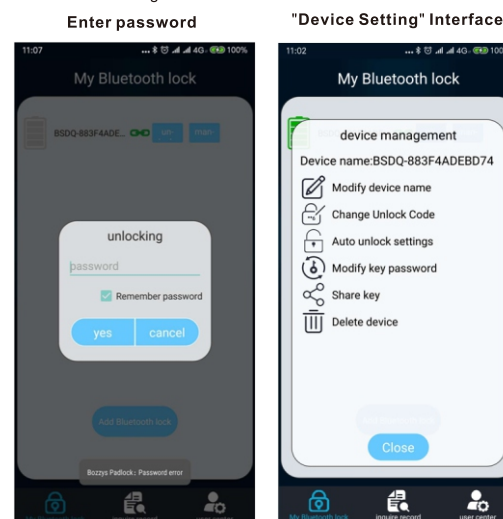
Initial password of the device connected by APP

Initial password of APP unlock: "123412"

Kind reminder: after connected, click "manage" to change the initial password.
(in order to prevent strangers from using Key box).

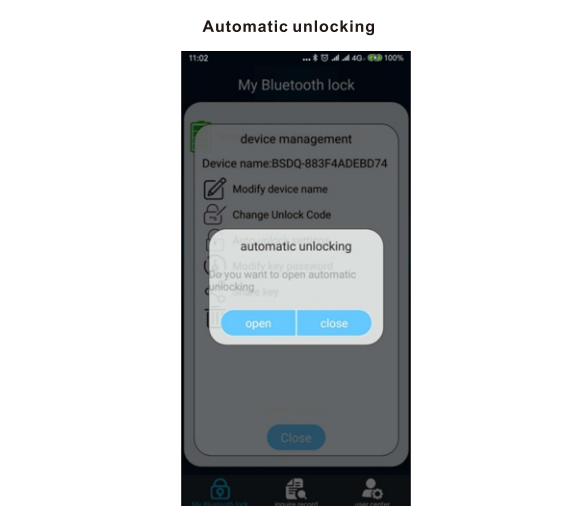
Device Setting Interface

- Click "Manage" into "Device management setting interface".
- Setting the name, password, Unlocking method, share and delete in setting interface.



APP Automatic unlocking

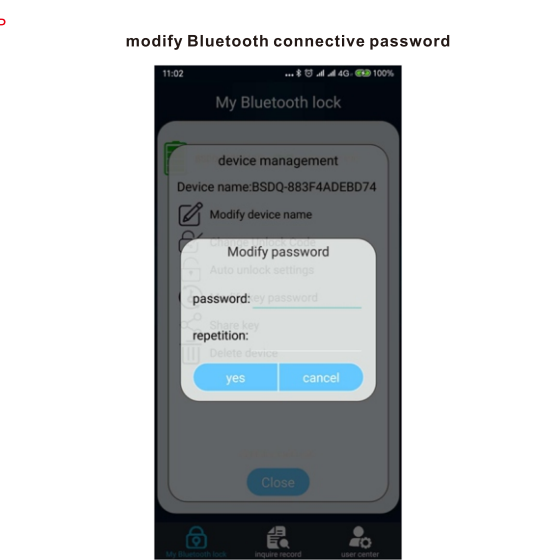
- Press the arouse button on the key box.
- Clicking to connect key box.
- Clicking "Manage", clicking "automatic unlocking setting" then choose open to finish automatic unlocking setting function.
- Next time to unlock, you need make sure you are in the Bluetooth area, then you need press the arouse button on the key box to unlock.
(It must be in the situation of mobile bluetooth is opening and APP is in running.)



MODIFY PASSWORD

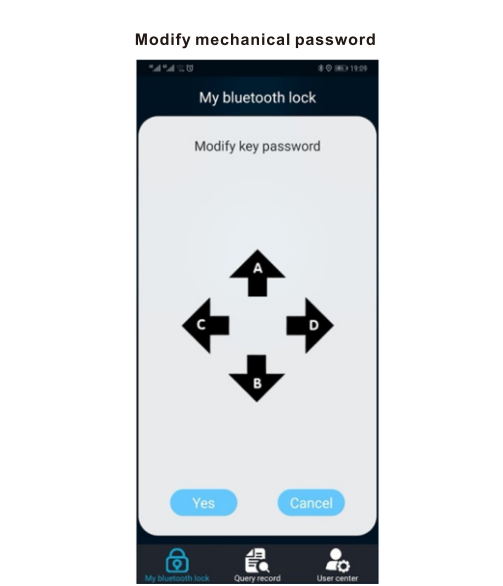
Modify Bluetooth connective password

- Mobile APP connects to the device.
- Click manage enter into the device management interface and modify password.
(Note: The password is the padlock binding password.)



Modify the keyboard password

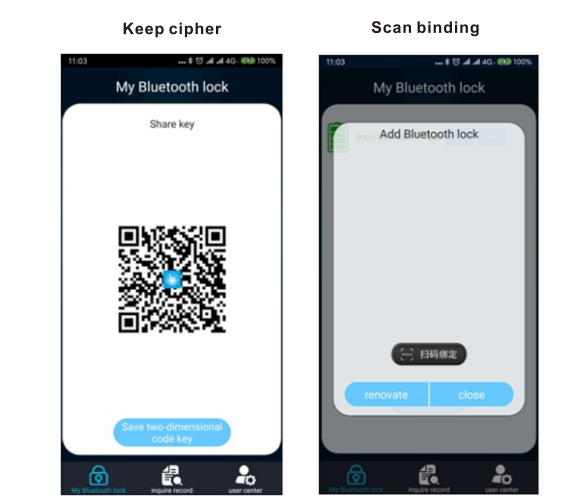
- mobile APP connects to the device.
- click manage to enter into device management interface to modify key box password.
(Note: It is available by mobile phone which is first one be connected to padlock.)



APP CIPHER

Keep cipher

- Using mobile phone connects to padlock by Bluetooth.
- Click "management" then equipment management appear and click "Keep cipher" then QR code come out.
(Note: It is cipher to open padlock by another mobile phone when scan the QR code)
- Add "Scan binding" share cipher to anyone by mobile phone.



PRODUCT PARAMETERS

Project	parameter
Brand	BOZZYS
Product Name	Key Box
Model	PL-B1
Size	Lock body 125mm*70mm*50mm 6mm dia (8-9mm dia after hanging); 40mm height
Shackle size	
Shell material	Zinc alloy
Shackle Material	304 SS, PVC coated
Battery	400mAh lithium battery
Standby time	3months
Endurance	2000times
Wireless distance	2m
Technical Support	Android 4.0 or IOS 8.0 or higher operating system

FEATURES

- Can unlock by key password.
- Connect APP and the Key box by bluetooth to unlock and set.
- Automatic locking.
- Manually unlock by the internal shackle.