

# VLOG pocket 2

Foldable Smartphone Gimbal

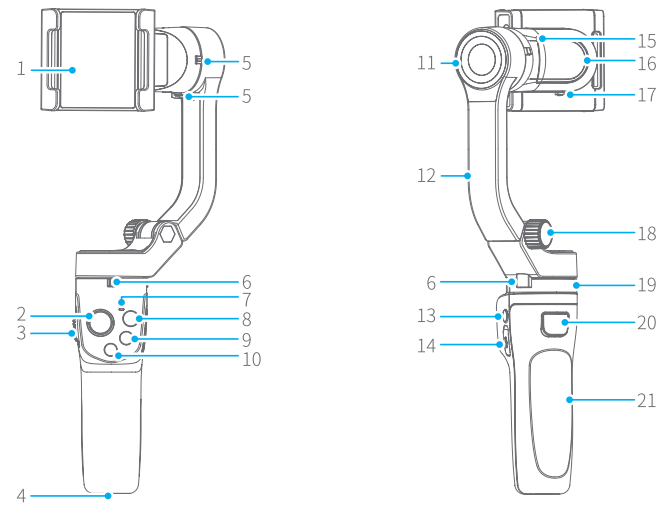
## Quick Start Guide

EN V1.1

### Overview

\*This product does not include the smartphone

VLOG pocket 2 is a three-axis handheld gimbal for mobile phones. It is small and foldable which can be folded into a pocket. The gimbal supports landscape and portrait shooting, which can also control phone shooting.



- |                         |                     |                     |                               |
|-------------------------|---------------------|---------------------|-------------------------------|
| 1. Smartphone holder    | 7. Status indicator | 13. Power button    | 19. Pan axis                  |
| 2. Joystick             | 8. Video button     | 14. USB C port      | 20. Trigger button            |
| 3. Focus button         | 9. Photo button     | 15. Cross arm       | 21. Handle (Built-in battery) |
| 4. 1/4 inch thread hole | 10. Function button | 16. Roll axis       |                               |
| 5. Tilt axis clamp      | 11. Tilt axis       | 17. Roll axis clamp |                               |
| 6. Pan axis clamp       | 12. Vertical arm    | 18. Folding knob    |                               |

1

### Download the Feiyu ON App

Scan the QR code to download the app, or search for "Feiyu ON" in the App Store or Google Play.

\* Requires iOS 9.0 or above, Android 6.0 or above.



iOS Version



Android Version

### Detailed manual

Scan the QR code to get the latest user manual or download it from the official website.

<https://www.feiyu-tech.com/vlog-pocket2/>

\*Follow the steps below to quickly experience the basic features of the product. Read the detailed manual for more usage of the product.



### Tutorial

The tutorial videos can be watched at FeiyuTech official website or scan the QR code on the right. <https://www.feiyu-tech.com/play/>

Watch tutorials in video skill page on Feiyu ON.



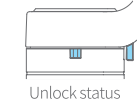
### User Guide

#### TIPS

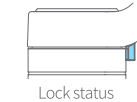
- Unlock the three-axis clamp before powering on the gimbal.
- Please fully charge the battery before powering on the gimbal for the first time.
- Keep the smartphone holder in landscape to mount smartphone.
- If the power is too low, the red light will flash three times every five seconds, which indicating you should charge it immediately.
- When not in use, power off the gimbal.

### Unlock / Lock the clamp

Take the pan axis clamp for example.



Unlock status



Lock status

2

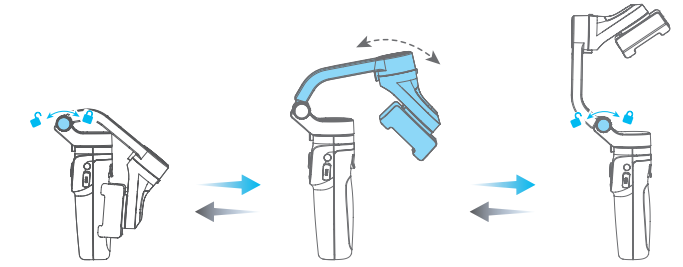
### Fold and unfold

#### Unfold

- Loosen the folding knob and tighten the knob after unfolding the vertical arm.
- Unlock the three-axis clamp.

#### Fold

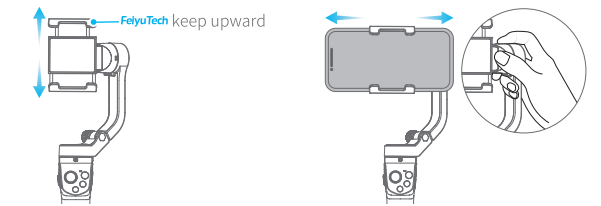
- Lock the three-axis clamp.
- Loosen the folding knob, and then tighten the knob after folding the vertical arm.



### Smartphone installation

\*It is recommended to remove the smartphone case before installation.

Pull the smartphone holder and put your smartphone in, keep the holder in the center of the smartphone. If the phone tilts to left or right, please hold the roll arm, slightly move the smartphone to opposite side until paralleling to the ground.

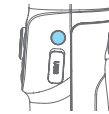


3

### Power on / off

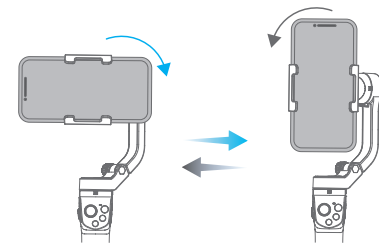
Before Powering on  
(1)Unlock the three-axis clamp  
(2)Mount the smartphone on properly

Power on / off: Long press the power button and release it when you hear the tone.



### Landscape and portrait mode switching

Double click the function button or manually rotate the smartphone holder (according to the picture below) to switch between landscape and portrait mode.



Kindly Reminder:  
Do not make anti-clockwise rotation in landscape mode, Do not make clockwise rotation in portrait mode.

### Common operations

#### Power button

Long press: Power ON/OFF  
\*Single tap: Enter/ quit shortcut menu<sup>①</sup>  
\*Double tap: Switch between Photo/ Video

#### Function button

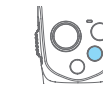
Single tap: Switch among common working modes<sup>②</sup>  
Double tap: Switch between landscape/ portrait mode  
Triple tap: Enter standby mode/ wake up  
Five tap: Initialize the gimbal (Single click to wake up)



4

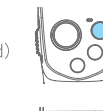
### Photo button

Single tap: Take photo (Bluetooth connectivity is needed)  
\*Long press: Burst photos



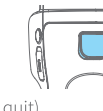
### Video button

Single tap: Start/ stop recording (Bluetooth connectivity is needed)



### Trigger button

Press and hold: Lock (Release it to quit)  
Double tap: Recenter  
\*Triple tap: Switch front and rear camera  
Single tap first then press and hold: Fast follow mode (Release it to quit)



Tips: \* means you need to connect gimbal with Feiyu ON App to achieve it.

- Can set pan mode, follow mode, all follow mode, etc.
- Can customize the working mode switch to in App shortcut menu.

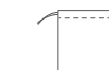
### Standard accessories



USB C Cable X1



Tripod X1



Portable bag X1

### Specifications

Tilt Range	165°
Roll Range	323°
Pan Range	330°
Standby Time	9 Hours
Weight	272g
Payload	250g (After Balanced)
Adapter smartphones	iPhone and Android phones (The width of the phone is between 41~89mm)

5

### Disclaimer

Thanks for using FeiyuTech product. The information in this document affects your safety and your legal rights and responsibilities. Read the entire document carefully to ensure proper configuration before use. Failure to read and follow instructions and warnings in this document may result in serious injury to yourself or others, or damage to your products or damage to other objects in the vicinity.

By using this product, you hereby signify that you have read this disclaimer and warning carefully and that you understand and agree to abide by the terms and conditions herein. You agree that you are solely responsible for your own conduct while using this product, and for any consequences thereof. You agree to use this product only for purposes that are proper and in accordance with all applicable laws, rules, and regulations, and all terms, precautions, practices, policies and guideline FeiyuTech has made and may make available. FeiyuTech accepts no liability for damage, injury or any legal responsibility incurred directly or indirectly from the use of product.

FeiyuTech will not provide any service for any product obtained from abnormal channels.

### Notice

- Make sure motor spinning is not blocked by external force when the product is power on.
- The product DO NOT contact water or other liquid if the product is not mark waterproof or splash-proof. Waterproof and splash-proof product DO NOT contact sea water or other corrosive liquid.
- DO NOT disassembly the product except marked detachable. It need send to FeiyuTech after-sales or authorized service center to fix it if you accidentally disassembly and cause abnormal work. The relevant costs are borne by user.
- Prolonged continuous operation may cause the product surface temperature to rise, please operate carefully.
- DO NOT drop or strike the product. If the product is abnormal, contact FeiyuTech after-sales support.

### Storage and Maintenance

- Keep the product out of the reach of children and pets.
- DO NOT leave the product near heat sources such as a furnace or heater. DO NOT leave the product inside of a vehicle on hot days.
- Please storage the product in dry environment.
- DO NOT overcharge or overuse the battery, otherwise it will cause damage to the battery core.
- Never use the product when the temperature is too high or too low.

6

# VLOG pocket 2

可折叠手机稳定器

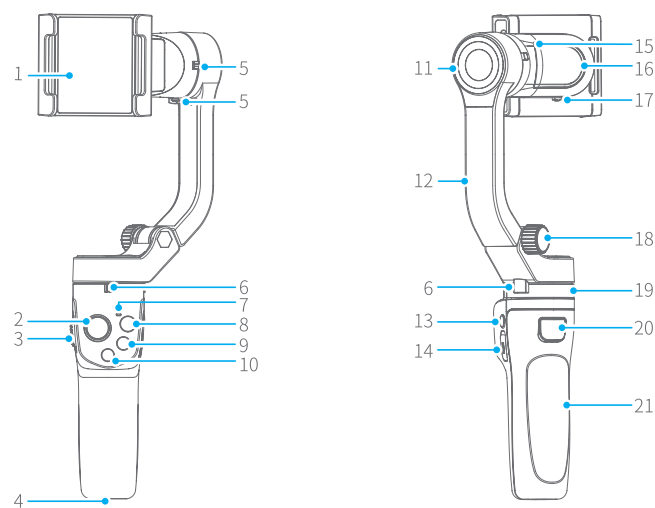
## 快速入门

CN V1.1

### 概览

\*本产品不含手机

VLOG pocket 2 是一款适配手机的三轴手持稳定器, 小巧, 可折叠, 折叠后可装入口袋。稳定器支持横拍和竖拍, 可控制手机拍摄。



- |             |          |              |               |
|-------------|----------|--------------|---------------|
| 1. 手机夹具     | 7. 状态指示灯 | 13. 电源键      | 19. 航向轴       |
| 2. 四向摇杆     | 8. 录像键   | 14. Type-C端口 | 20. 扳机键       |
| 3. 调焦键      | 9. 拍照键   | 15. 横臂       | 21. 手柄 (内置电池) |
| 4. 1/4英寸螺纹孔 | 10. 功能键  | 16. 横滚轴      |               |
| 5. 俯仰轴卡位    | 11. 俯仰轴  | 17. 横滚轴卡位    |               |
| 6. 航向轴卡位    | 12. 竖臂   | 18. 折叠旋钮     |               |

1

### 下载安装 Feiyu ON App

扫描二维码或在应用商店搜索“Feiyu ON”下载。

\* 系统要求: iOS 9.0或更高版本, Android 6.0或更高版本  
\* Android版本请使用浏览器扫描二维码下载



iOS 版本



Android 版本

### 详细说明书

扫码或访问飞宇科技官网获取最新版本  
<https://www.feiyu-tech.cn/vlog-pocket2/>

\*按以下步骤进行操作, 可以快速体验产品的基本功能。更多功能的使用, 请参阅详细版说明书。



### 教程

- 可在飞宇官网 <https://www.feiyu-tech.cn/play/> 观看教学视频或扫描右边二维码前往。
- 可在Feiyu ON App-[技巧]页面查看教学视频。



### 入门

#### 温馨提示

- 开机使用前请务必解锁三轴卡位。
- 产品首次使用时, 请务必给稳定器充满电。
- 安装手机时将手机横屏安装。
- 若电量过低, 红灯会每隔5秒快闪3次, 建议您马上充电。
- 当您不使用时, 请关闭电源。

#### 三轴卡位解锁 / 锁定

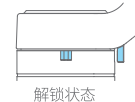
以航向轴卡位为例。



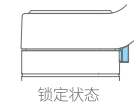
解锁



锁定



解锁状态



锁定状态

2

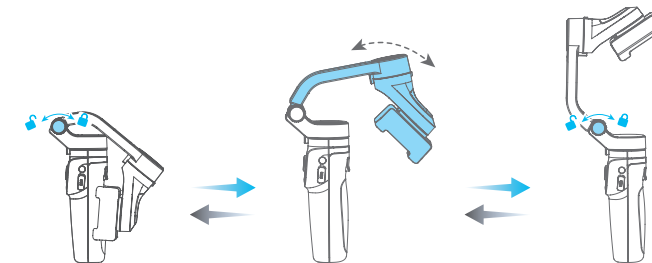
### 折叠 / 展开

#### 展开

- 拧松折叠旋钮, 展开竖臂后拧紧旋钮。
- 解锁三轴卡位。

#### 折叠

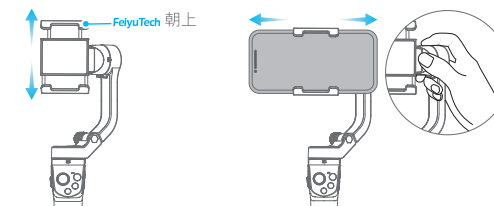
- 锁定三轴卡位。
- 拧松折叠旋钮, 折叠竖臂后再拧紧旋钮。



### 安装手机

\*安装前建议取下手机保护套。

拉开手机夹具, 将手机左右居中置入。若手机倾斜, 可手持横臂与地面平行, 左右移动手机至平行于地面。



3

### 开机/关机

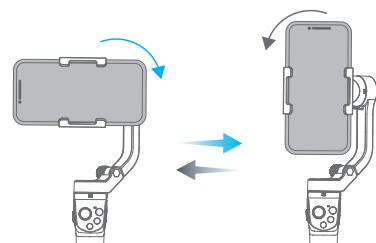
\*稳定器开机前请将三轴卡位解锁。  
\*手机安装稳固后才能开机。

开机/关机: 长按电源键, 听到提示音后松开。



### 横竖拍切换

双击功能键或手动转动手机夹具 (如下图), 可切换横拍 / 竖拍。



\*手动转动时请注意, 横拍时手机不可再逆时针转动, 竖拍时手机不可再顺时针转动。

### 常用操作

#### 电源键

- 长按: 开机 / 关机
- \*单击: 进入 / 退出快捷菜单<sup>®</sup>
- \*双击: 切换拍照 / 录像



#### 功能键

- 单击: 切换常用工作模式<sup>®</sup>
- 双击: 切换横拍 / 竖拍
- 三连击: 待机模式 / 唤醒
- 五连击: 初始化 (单击唤醒)



4

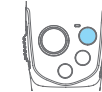
### 拍照键

- 单击: 拍照 (需连接蓝牙)
- \*长按: 连拍



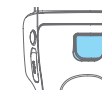
### 录像键

- 单击: 开始/停止录像 (需连接蓝牙)



### 扳机键

- 按住: 锁定 (松开退出)
- 双击: 复位
- \*三连击: 切换前/后置摄像头
- 单击后按住: 运动模式 (松开退出)



注: \* 表示需要连接Feiyu ON App实现  
①可设置航向跟随、航向俯仰跟随、三轴全跟随等模式  
②可进入App快捷菜单自定义切换的工作模式

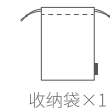
### 配件



Type-C数据线 × 1



三脚架 × 1



收纳袋 × 1

### 参数

俯仰角动作角度	165°
横滚角动作角度	323°
航向角动作角度	330°
待机时间	9小时
产品重量	272g
最大载重	250g (重心平衡状态下)
适配参考机型	iPhone系列及Android系列手机 (手机宽度范围为41~89mm)

5

### 免责声明

感谢您选用飞宇科技产品。本文所提及的内容关系到您的安全、合法权益及责任, 请务必认真阅读, 以及按照指导正确设置和使用本产品。不按照本文的说明和警告来操作, 可能会给您和周围人带来伤害, 损坏本产品或周围产品。

禁止任何用户的任何非法用途。用户将为购买和使用产品的一切行为负责。对于本产品, 本公司不承担终端客户对本产品所有调试和使用当中的风险和责任 (包括直接或间接或者第三方的损失)。我公司对于任何从非正常渠道获得或不明用途的产品, 将不予任何服务。

### 注意

- 确保本产品开启过程及开启后, 电机转动不受外力阻挡。
- 请勿将本产品接触到水或其他液体。
- 请勿拆卸产品整机, 如不慎拆开导致工作异常, 请寄回重新调试。由此产生的费用全部由客户承担。
- 长时间持续工作可能导致产品表面温度升高, 请谨慎操作。
- 严禁摔落或碰撞, 摔落或碰撞本产品, 有可能使其损坏, 导致工作异常。如出现摔落或碰撞导致工作异常, 请及时联系售后。

### 存储和保养

- 请将本产品存放在儿童及宠物接触不到的地方。
- 禁止将本产品放在靠近热源 (火炉或加热器等) 的地方以及将置于热天的汽车内。
- 请在干燥的环境中存储。
- 切勿过充、过放电池, 否则将对电芯造成损害。
- 切勿在温度太高或太低的环境下使用本产品。

6