

27WON

27W-8-310 Fender Shrouds 11th Gen Civic

Install instructions for the 27WON fender shrouds for the 2022+ Honda Civic USDM

Written By: Vincent Melon



INTRODUCTION

In this installation guide, we have provided step-by-step instructions to install the left and right-hand side 27WON Performance Fender Shrouds.

Advisory:

- Fitment is only confirmed for USDM and the Left-hand drive version of the 2022+ Honda Civic.
Fitment not confirmed for Right-hand drive models



TOOLS:

- [3/8" Ratchet](#) (1)
- [8mm Socket](#) (1)
- [10mm Socket](#) (1)
- [Rivet Nut Tool](#) (1)



PARTS:

- [11th Gen Civic- Passenger Side Fender Shroud](#) (1)
- [11th Gen Civic- Driver Side Fender Shroud](#) (1)
- [M5x0.8x30mm Flanged Bolt](#) (2)
- [M5x0.8x12mm SS Riv Nut](#) (2)
- [M5 Flat Washers](#) (2)

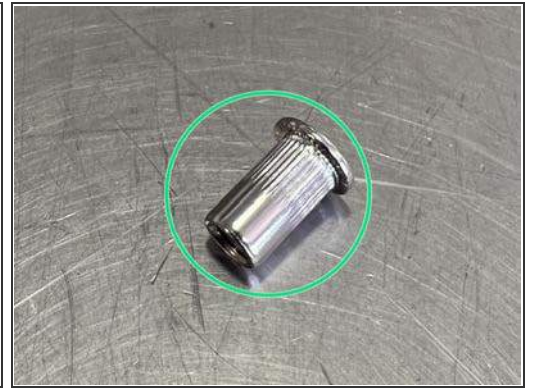
Step 1 — Getting Started





- First and foremost; **THANK YOU** for becoming a part of the 27WON Family. We hope to **REDEFINE** your experience of the aftermarket with the highest level Parts, Customer Service, Packaging, & Support

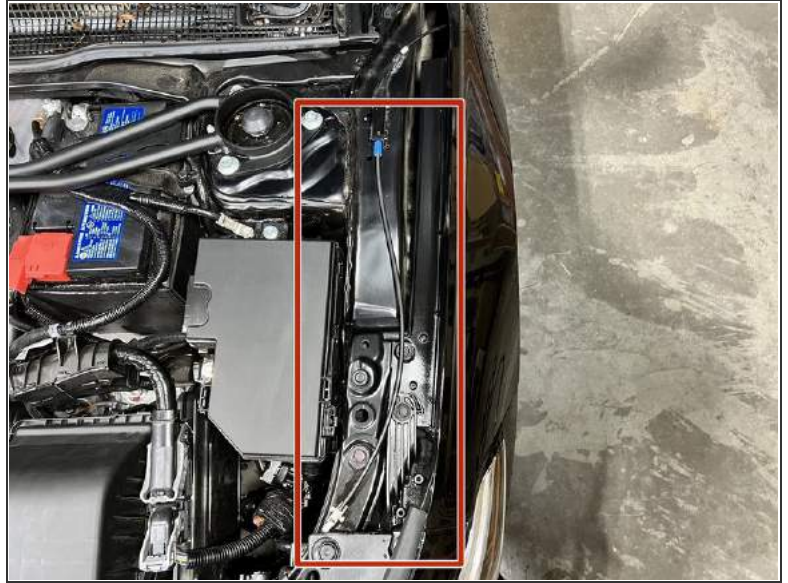
 These do not fit 2023+ Integra

Step 2 — Riv Nut Tool Required



-  These instructions are written using a readily available riv nut install tool. The following steps require a tool like this. A similar style riv nut tool will suffice
-  This riv nut tool can be had for on around \$40 from places like Amazon or your local hardware store. Be sure to have an M5 size adapter in your kit
- Riv Nuts are supplied with the Fender Shroud set

Step 3 — Identify Work Space



- Open the hood to access both the driver and passenger side fender shroud areas
- Start on the driver-side fender shroud first

Step 4 — Install Riv Nut Into Fender



- Locate small 5mm hole on driver-side fender. Place supplied Riv Nut in hole with red circle
- Use Riv Nut tool to install M5 Riv Nut
- Riv Nut successfully installed. It is confirmed installed correctly when the riv nut is snug in place and will not pull back out from the hole

Step 5 — Remove Driver Side Fender Hardware



- Use 3/8" ratchet and 10mm socket to remove the two (2) 10mm bolts

Step 6 — Install Driver Side Shroud



- Place Shroud as Shown
- Line up holes on bottom of shroud with the two bolts removed in the last step
- ① **"torque to snug"** is defined as 1/4 to 1/2 more rotation after setting resistance is felt
- Install supplied 8mm SS bolt and small washer into Riv Nut. Torque to snug
- Reinstall both 10mm bolts and torque to snug

Step 7 — Locate Passenger Side Fender Area



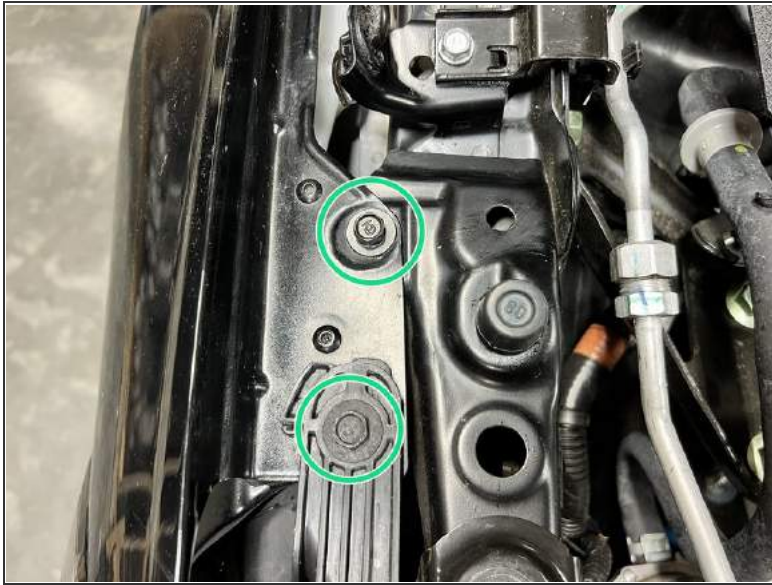
- Locate Passenger side (RH) fender area

Step 8 — Install Riv Nut to Passenger Side Fender



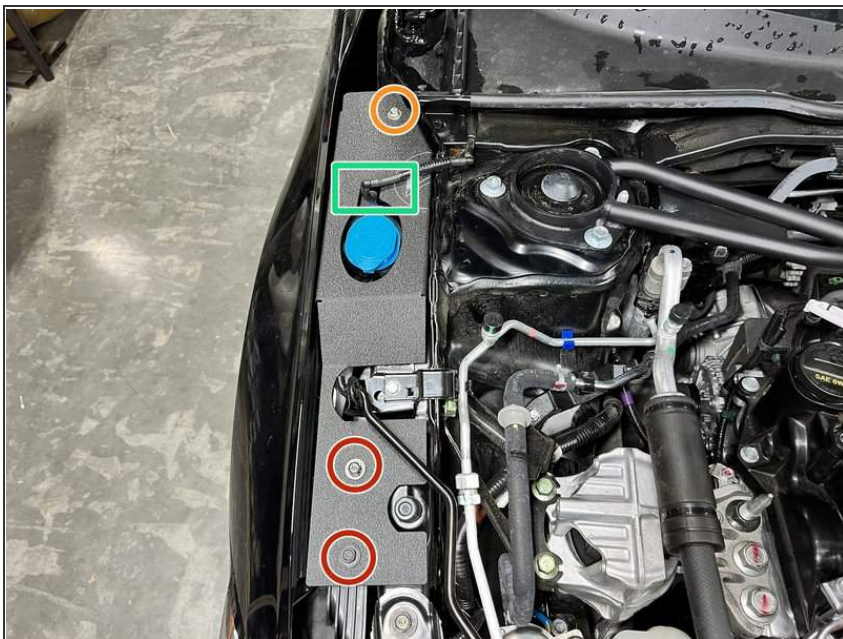
- Locate small 5mm hole shown in red circle.
- Use Riv Nut tool to install M5 riv nut
- Riv Nut successfully installed. It is confirmed installed correctly when the riv nut is snug in place and will not pull back out from the hole

Step 9 — Remove Passenger Side Fender Hardware



- Use 3/8" ratchet and 10mm socket to remove the two 10mm bolts
- Disconnect the windshield washer hose by pulling the halves apart

Step 10 — Install Passenger Shroud



- Place passenger side shroud as shown
- Line up holes on the bottom of the shroud with the two bolts removed in the last step
- Install supplied 8mm SS bolt and small washer and torque to snug
- Reinstall both 10mm bolt and torque to snug
- Put two windshield washer hose halves back together

Step 11 — I Dare You to REDEFINE



- This completes the installation of your 27WON Performance Fender Shrouds
- We hope you were impressed with your 27WON experience and love your new shrouds for years to come. Email us at sales@27won.com or call us at 571-271-0271 with any questions or concerns
- Please Leave a review here: <https://store.27won.com/11th-gen-honda-c...>
- Share your experience using #27WON on Instagram and Facebook