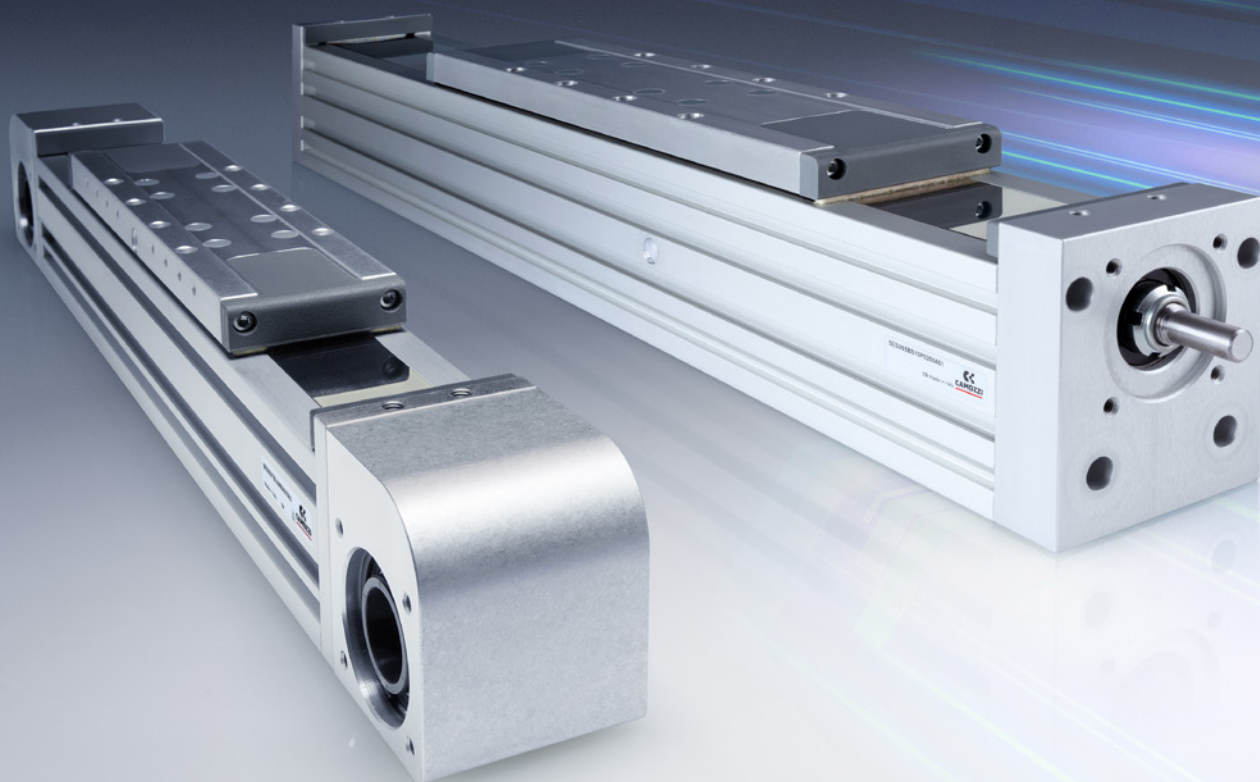


## ELECTROMECHANICAL AXES SERIES 5E



## SERIES 5E DESIGNED FOR ANY APPLICATION



Series 5E axes are mechanical linear actuators in which the rotary movement generated by a motor is converted into a linear movement using a toothed belt or a recirculating ball screw.

Series 5E, available in 3 sizes, 50, 65 and 80, is designed with a special self-supporting square profile with a recirculating ball guide integrated within the actuator, providing exceptional stiffness and resistance to external loads.

The profile is covered by a stainless steel plate to protect the internal elements from environmental contaminants. The axis is equipped with a magnet that allows external proximity switches, enabling operations like homing or extra-stroke readings to be performed.

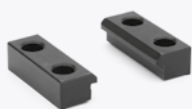
These two versions make the Series 5E suitable to meet the needs of different industries, including packaging, assembly and automotive.

## The ultimate in flexibility and efficiency

Utilising a modular design, the Series 5E can be combined to create multi-axis solutions with different transmission technologies to guarantee maximum flexibility and adaptability for the customer.

Camozzi Automation is a trusted technology partner that supports customers from helping to select the best technical solutions, through to installation and commissioning of their chosen electromechanical system, whatever the application.

### ACCESSORIES



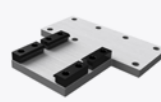
Side clamping bracket  
Mod. BGS



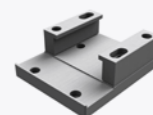
Interface plate  
slider on slider



Interface plate  
profile on slider



Interface plate  
profile on slider



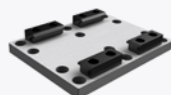
Interface plate - Series 6E  
cylinder on slider



Interface plate - profile  
side on slider - left pos.



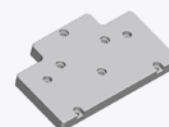
Interface plate - profile  
side on slider - right pos.



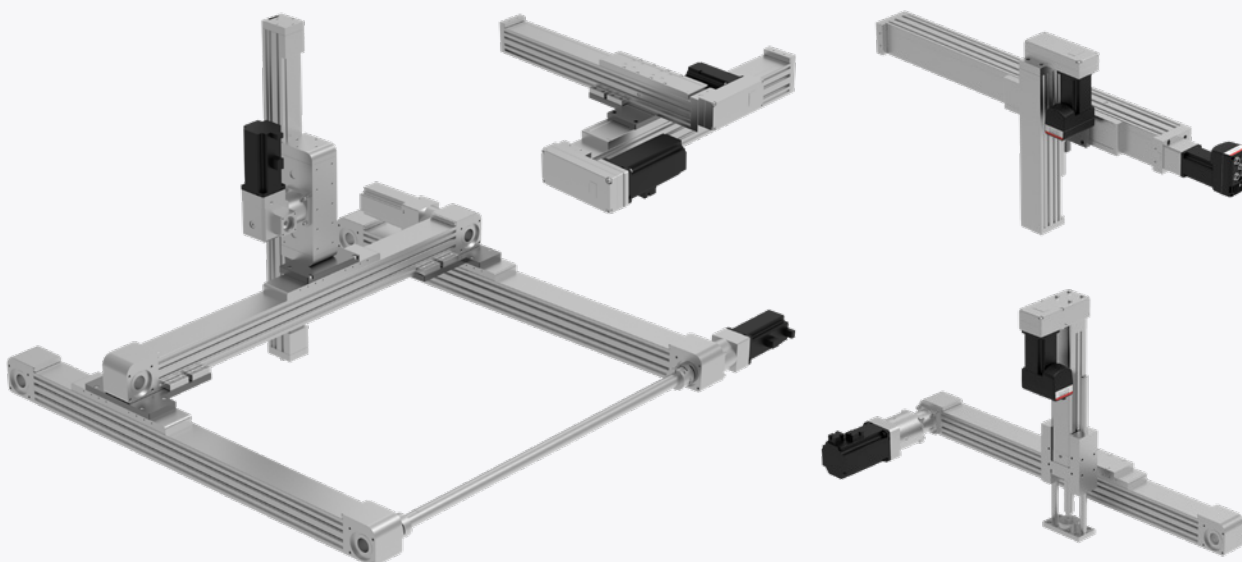
Fixed interface plate



Interface plate  
Guide S. 45 / Cyl. S. 6E



5E/5V connection flange



## SERIES 5ES...TBL

Multi-position system with movement transmission via a toothed belt.

### MAIN TECHNICAL FEATURES

<i>Sizes</i>	<b>50, 65, 80</b>
<i>Protection class</i>	<b>IP40</b>
<i>Max stroke</i>	<b>6 m</b>
<i>Max speed</i>	<b>5 m/s</b>

### BENEFITS



**Suitable for high dynamics**



**Suitable for high speeds**



## SERIES 5ES...BS

Multi-position system with movement transmission via ball screw.

### MAIN TECHNICAL FEATURES

<i>Sizes</i>	<b>50, 65, 80</b>
<i>Protection class</i>	<b>IP40</b>
<i>Repeatability</i>	<b>± 0,02 mm</b>
<i>Max force</i>	<b>4000 N</b>

### BENEFITS



**High accuracy and repeatability**



**High payload capacity**





## Series 5ES...BS vs Series 5ES...TBL

### Series 5ES...BS



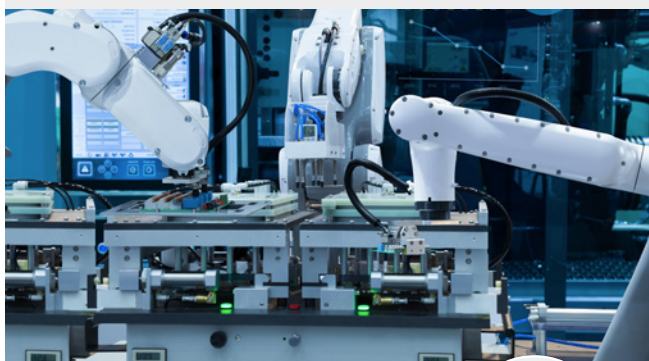
### Series 5ES...TBL



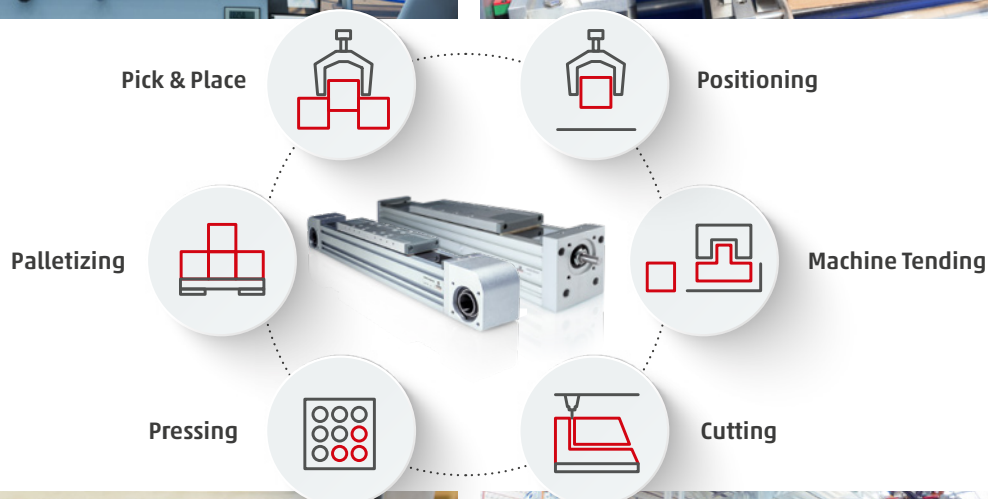
High force	●	●
High speed	●	●
Long stroke	●	●
High accuracy/repeatability	●	●

## SECTORS AND APPLICATIONS

### ASSEMBLY AND ROBOTICS



### PACKAGING



### FOOD PROCESSING



### AUTOMOTIVE

## Contacts

**Camozzi Automation S.p.A.**  
Società Unipersonale  
Via Eritrea, 20/I  
25126 Brescia  
Italy  
Tel. +39 030 37921  
marketing@camozzi.com

**Customer Service**  
Tel. +39 030 3792790  
service@camozzi.com

**Export Department**  
Tel. +39 030 3792262  
sales@camozzi.com

Want to learn more?  
Stay in touch with  
**Camozzi news**

