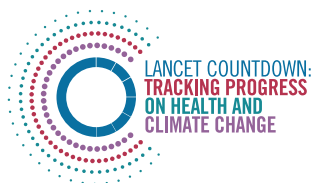


The Lancet Countdown on Health and Climate Change

# Policy Brief for the United States of America

2022



# EXECUTIVE SUMMARY

The *Lancet* Countdown Policy Brief for the United States (U.S.) builds on the evidence presented in the 2022 Global *Lancet* Countdown Report to provide an annual country-level assessment of scientific data on climate change and health. The Brief exposes the inequitable health burdens associated with climate change, and highlights opportunities

to improve health through swift policy action. The 2022 U.S. Brief is supported by a diverse group of health experts from more than 80 organizations who recognize that climate change is first and foremost a health crisis.

## The State of Climate Change and Health in the United States

Climate change and its primary driver – burning fossil fuels – have created an accelerating crisis of far-reaching health impacts including heart and lung disease, heat-related illness, infections, food- and water-borne ailments, poor pregnancy outcomes, adverse mental health impacts, injuries, and death. There are also significant implications for health and well-being with disruption to health care delivery; population displacement; interruptions in education, employment, and other community services; and societal-wide economic harm.

While everyone is at risk, the health impacts of climate change are not experienced equally. Structural racism and economic injustice amplify climate change-related health inequities by increasing susceptibility and exposure to climate threats and reducing the adaptive capacity of communities targeted by discriminatory policies. Climate change is one of many compounding health crises facing communities and health systems across the U.S. today, furthering the urgency of decisive policy action to protect health. The 2022 Brief focuses on four areas of health impact: health harms of poor air quality, heat-related illness, infectious disease, and mental health.

### **BURNING FOSSIL FUELS DRIVES POOR AIR QUALITY, HARMS HEALTH, AND INCREASES HEALTH INEQUITIES.**

Fossil fuel combustion produces climate change-causing greenhouse gas emissions and harmful air pollution. Air pollution harms every major organ system in the body, causes heart disease and childhood asthma, and is a major cause of illness and death in the U.S. Children are uniquely susceptible. Due to systemically unjust policies, there are deep racial and income inequities in air pollution exposure. In addition, climate change worsens air quality by increasing exposure to wildfire smoke, dust, ground-level ozone, and pollen—all of which harm health. The illness and death caused by air pollution impose a major economic toll.

### **EXTREME HEAT IS BECOMING MORE SEVERE AND THERE ARE WIDE INEQUITIES IN HEAT-RELATED ILLNESS AND DEATH.**

Heat is the leading cause of weather-related death in the U.S. Susceptibility to heat-related illness is heightened among children, pregnant people, older adults, and people living with pre-existing illness. Extreme heat can threaten children's physical and mental health, impair their ability to learn in school, and threaten safe outdoor play. Extreme heat exposure during pregnancy is associated with poor birth outcomes. People from communities of color and low-wealth communities, outdoor workers, people experiencing homelessness, and people who are incarcerated are often more exposed to extreme heat and thus more often suffer from heat-related illness and death. Strategies exist at the household, community, and city levels that can protect against extreme heat and other climate-related health harms, yet not all people and communities have equitable access to the resources and strategies known to minimize heat risks.

### **CLIMATE CHANGE IS INCREASING THE THREAT OF INFECTIOUS DISEASES.**

Early evidence suggests climate change may be linked with increases in the incidence of more than half of infectious diseases worldwide. Water-borne disease threats are increasing as warmer water is more conducive to the growth of pathogenic bacteria such as *Vibrio* spp. Increased flooding can contaminate drinking and recreational waters, contributing to higher rates of gastrointestinal illness. Climate change is also expanding the areas in which disease-transmitting ticks and mosquitoes live, increasing the suitability for the transmission of pathogens that cause Lyme disease and West Nile.

### **CLIMATE CHANGE HARMS MENTAL HEALTH AND WELL-BEING.**

Climate change is associated with increased risk of depression, stress, post-traumatic stress disorder, anxiety, grief, substance abuse, disempowerment, and hopelessness. Children, young people, and rural and Indigenous communities are particularly impacted.

# Policy Recommendations to Advance Health and Equity in the U.S. Climate Change Response

The U.S. is at a turning point on climate change. The Inflation Reduction Act, Infrastructure Investment and Jobs Act, and CHIPS and Science Act create historic new federal investments to support a transition to clean energy and build climate resilience. City, tribal, and state governments are innovating and scaling up local climate action. Yet the U.S. continues to pursue climate strategies inconsistent with health and equity goals—subsidizing fossil fuels, expanding oil and gas leases, and underfunding climate change and health programs.

Our ongoing reliance on fossil fuels causes tremendous health harm. A rapid transition to clean energy and away from fossil fuels can result in immediate health benefits including cleaner air and safer, more resilient communities, while also protecting against the worst climate change-related health threats. To best protect health and equity, these goals must be prioritized in climate policy implementation. The U.S. Brief offers five recommendations to ensure that historic climate actions and investments protect health today and create a healthier and more equitable future for all people in the U.S.:

1

**Achieve a zero-emission energy sector and prioritize air quality improvements in the most impacted communities.** The U.S. must rapidly reduce greenhouse gas emissions by an estimated 57% to 63% by 2030 to achieve national emissions consistent with the goals of the Paris Agreement. This will require additional action and investment by all levels of government. To advance health, implementation of clean energy policies must ensure that all communities have equitable access to healthy, clean energy solutions, and that air quality improvements target the most impacted communities.

2

**Accelerate the transition to a zero-emission transportation system that equitably benefits health.** Decarbonizing transportation will bring immediate health benefits including cleaner air and more physical activity. To maximize health equity, federal and state governments can: increase funding for zero-emission public transit systems and active transportation infrastructure (e.g., walking, biking); strengthen fuel efficiency and pollution standards; expand state incentives to accelerate equitable electric vehicle access; and expand access to clean and reliable transportation in rural communities.

3

**End the development of all new fossil fuel infrastructure and phase out fossil fuel subsidies as rapidly as possible, while ensuring a just transition.** Ending new fossil fuel development will protect health and improve health equity. Policies must also minimize the health impacts of existing fossil fuel infrastructure. These efforts must be accompanied by investments to support workers and communities in the just and equitable transition to renewable energy.

4

**Target investments in adaptation to build healthy, resilient, and equitable communities.** Investing in community resilience will prevent the worst impacts of climate change, strengthen public health and health care systems, and improve overall health outcomes. These efforts—targeted in the most burdened communities—must prioritize multi-sector strategies to strengthen health systems, build neighborhoods that buffer against extreme heat and other climate events, and redress historic harms of economic and social disinvestment.

5

**Scale up U.S. contributions to global climate change finance to support global health equity.** Achieving the global goal of limiting temperature rise to 1.5°C will protect health now and for future generations. Current financing from the U.S. and other high-income countries falls far short of what is needed to help all countries rapidly reduce greenhouse gas emissions and achieve this global climate target. The U.S. must fulfill and expand its commitment to increase U.S. contributions to global climate finance for clean energy, adaptation, and a just transition.

# POLICY BRIEF FOR THE UNITED STATES OF AMERICA

## The State of Climate Change and Health in the United States

Climate change is an accelerating health crisis, but there are reasons for optimism. Promising climate solutions are available and momentum for climate action is growing. An equitable transition away from fossil fuels to clean energy sources will reduce air pollution and curb the threats of climate change - improving health, saving lives, and promoting health equity.

Climate change and its primary driver – burning fossil fuels – have created an accelerating health crisis.<sup>1,2</sup> The health impacts in the U.S. are far-reaching and predicted to increase in the coming years. These impacts include heart and lung disease, infectious diseases, heat-related illness, poor pregnancy outcomes, sleep deficiencies, mental health impacts, injuries, and death. Climate change also affects health through disruptions in health care delivery, education, employment and other social systems; population displacement; and societal-wide economic harm.<sup>1-4</sup> Policy decisions rooted in structural racism and economic injustice place many communities at even greater risk (Box 1).

Producing and burning coal, methane gas\*, and oil creates harmful air pollution and releases greenhouse gases (GHGs) that cause climate change. The impacts of climate change are now upon us. In July 2022,

night time temperatures were the warmest in U.S. history,<sup>5</sup> and nearly two-thirds of people across the continental U.S. and Puerto Rico were affected by drought.<sup>6</sup> Climate change has made recent extreme weather events in the U.S. worse, including megadrought in the West,<sup>7</sup> wildfires in California,<sup>8</sup> extreme weather and precipitation in the Gulf Coast,<sup>9-11</sup> warm ocean anomalies in the Pacific Northwest,<sup>12</sup> and extreme rainfall from hurricanes in Florida.<sup>13</sup>

Communities and health systems across the U.S. face compounding health crises including the ongoing COVID-19 pandemic, gun violence,<sup>14,15</sup> racial injustice,<sup>16,17</sup> and economic insecurity. Climate change and its health risks converge with these crises, furthering the urgent need for decisive action to protect health.

### Box 1. Climate Change and Structural Inequities

The health impacts of climate change are not experienced equally (Appendix Table A). Climate change deepens health inequities rooted in systemic racism and economic inequity, and disproportionately harms communities of color, Indigenous communities, and people living in low-wealth communities. Structural racism amplifies inequities in climate change-related health impacts by increasing susceptibility and exposure to climate threats and reducing the adaptive capacity of communities targeted by discriminatory policies.<sup>18,19</sup>

For example, the racially discriminatory lending practice of redlining that began in the 1930s continues to impact the health risks from climate change today.<sup>20</sup> Historically redlined neighborhoods have more oil and gas wells,<sup>21</sup> higher levels of air pollution,<sup>22</sup> less tree cover and green space,<sup>23</sup> and hotter temperatures.<sup>24</sup> Their residents experience higher rates of adverse health outcomes such as heat-related illness, cardiovascular disease, respiratory illness, and poor maternal health outcomes.<sup>20,25,26</sup>

The past forced migration of Indigenous people away from their traditional lands also places Indigenous communities at greater exposure to climate change threats today, as the lands to which they were forcibly moved are often hotter and drier.<sup>26</sup> Redlining and forced migration are only two examples of the many ways policy decisions reflect and perpetuate racial and economic injustice.

Many other communities and populations, such as children, pregnant people, older adults, LGBTQ persons, and people living with disabilities, are at increased risk from climate change due to a wide range of social, political, physiological, developmental, and behavioral factors (Appendix Table A).

\*Methane gas is also referred to as natural gas.

**Table 1. 2022 Lancet Countdown Indicator Data for the United States.**



## AIR POLLUTION

**Indicator 3.3:** In 2020, there were approximately 32,000 deaths in the U.S. due to exposure to ambient anthropogenic PM<sub>2.5</sub>. Of these, 37% were directly related to fossil fuel burning.

**Indicator 4.1.4:** In 2020, the monetized value of these deaths due to air pollution was estimated to be \$142 billion (0.7% of the U.S. GDP), equivalent to the annual income of over 2.2 million people under average income in the U.S. combined.



## HEAT

### HEAT AND EXPOSURE TO WARMING

**Indicator 1.1.1:** Average U.S. summer temperatures from 2017-2021 were 1.4°F (0.8°C) higher than the 1986-2005 average, and this is 0.5°F (0.3°C) above the global average increase during the same period.

### HEAT EXPOSURE AMONG SENSITIVE POPULATIONS

**Indicator 1.1.2:** Adults over age 65 experienced 137 million more person-days\* of heatwaves,<sup>§</sup> meaning that, on average, each older adult experienced an additional 3 heatwave days per year from 2012–2021 compared to 1986-2005.

**Indicator 1.1.2:** Infants under 1 year experienced 12 million more person-days\* of heatwaves,<sup>§</sup> meaning that each infant experienced, on average, an additional 0.24 heatwave days per year from 2012–2021 compared to 1986-2005.

### HEAT-RELATED MORTALITY

**Indicator 1.1.5:** Heat-related mortality for people over 65 is estimated to have increased by approximately 74% from 2000-2004 to 2017-2021.

### ECONOMIC BURDEN OF HEAT

**Indicator 4.1.2:** In 2021, the monetized value of global heat-related mortality in the U.S. was estimated to be equivalent to over 850,000 people receiving the average U.S. income.

**Indicator 1.1.4:** In 2021, heat exposure led to the loss of 2.5 billion potential labor hours, a 36% increase from the 1990–1999 average.

**Indicator 4.1.3:** In 2021, \$68 billion (0.3% of the U.S. GDP) was lost in potential income from reduced labor due to extreme heat.



## INFECTIOUS DISEASE

**Indicator 1.3:** From 1951-1960 to 2012-2021, the amount of time each year that *Ae. aegypti* mosquitoes are able to spread dengue increased by 48%.

**Indicator 1.3:** The contagiousness of dengue by *Ae. aegypti* (as defined by the basic reproductive number, R<sub>0</sub>) was 64% higher in 2012–2021 compared to 1951–1960.

**Indicator 1.3:** The duration of malaria transmission season lengthened by 38% in U.S. lowland areas\* in 2012–2021 compared to 1951–1960.

**Indicator 1.3:** From 2003 to 2020, 5% more of U.S. coastal waters have become suitable for transmission of *Vibrio cholerae*.



## SEA LEVEL RISE

**Indicator 2.3.3:** Over 1.7 million people lived less than 3 feet above current sea level in 2020.



## INDICATORS RELEVANT TO BRIEF POLICY RECOMMENDATIONS

### GREENHOUSE GAS EMISSIONS

**Indicator 4.2.5:** In 2019, the U.S. was the second-greatest emitter of CO<sub>2</sub> by both production- and consumption-based accounting, contributing 13.3% and 15.7% of the world's production- and consumption-based CO<sub>2</sub> emissions, respectively. In 2019, the U.S. was also one of the five leading emitters of PM<sub>2.5</sub> by both production- and consumption-based accounting, contributing 2.9% of the world's production-based PM<sub>2.5</sub> emissions and 4.9% of the world's consumption-based PM<sub>2.5</sub> emissions.

### TRANSPORTATION

**Indicator 3.4:** In 2019, electricity represented only 0.1% of total fuel use for road travel. Although this was a 24% increase in electricity use in transportation from the prior year, fossil fuel use in road transport declined by just 0.8% in 2019.

### ADAPTATION

**Indicator 2.2.3:** In a study of 50 urban centers in the U.S., only half were classified as moderately green or above in 2021.

\* Person-days- the number of heatwave days multiplied by sensitive population count.

§ Heatwave is defined as a period of two or more days where both the minimum and maximum temperatures are above the 95<sup>th</sup> percentile of the U.S. climatology (defined on the 1986–2005 baseline).

& Any part of the US that is <1500 meters above sea level is considered lowland.

All indicator data listed in this table come from the 2022 Global Lancet Countdown report. For detailed information regarding the indicators and indicator methodology, please see the global Lancet Countdown report Appendix.<sup>1</sup>

# Health Harms of Poor Air Quality

GHG emissions predominantly result from burning fossil fuels and agricultural production processes, activities that also contribute to dangerous levels of air pollution. From 2018 to 2020, more than 137 million people—over 40% of the U.S. population—lived in cities where air pollution levels exceeded U.S. regulatory standards.<sup>27</sup> This is especially concerning since health harms occur at pollution levels below the current standards and there is no known safe level of air pollution exposure.<sup>28–30</sup> An equitable and just transition to clean energy can result in significant, near-term health improvements by minimizing air quality-related death and disease,<sup>31–33</sup> with the potential to benefit disproportionately impacted communities.<sup>34</sup>

## **BURNING FOSSIL FUELS PRODUCES HEALTH-HARMING AIR POLLUTION AND LEADS TO HEALTH INEQUITIES.**

Air pollution from fossil fuel combustion\* harms every major organ system (Appendix Table B) and is a major cause of illness and death in the U.S. (Box 2).<sup>35,36</sup> Children are uniquely susceptible.<sup>37,38</sup> Data from the 2022 Global *Lancet* Countdown report suggests that in 2020, there were approximately 32,000 deaths in the U.S. due to exposure to ambient human caused particulate matter pollution (PM<sub>2.5</sub>), 37% of which were directly related to fossil fuels (Indicator 3.3, Table 1 §).<sup>1</sup> However, recent research suggests air pollution-related mortality in the U.S. may be much higher.<sup>32,39</sup> Substantial economic costs are associated with the mortality that results from air pollution (Indicator 4.1.4, Table 1).<sup>1</sup>

Air quality in most of the U.S. has consistently improved for the past several decades,<sup>46</sup> yet racial and income inequities in exposure to air pollution remain,<sup>30</sup> and in some cases are increasing.<sup>47</sup> Higher levels of PM<sub>2.5</sub> are disproportionately concentrated in Black and African American, Asian, Latinx, and low-wealth communities than white and higher-income communities.<sup>48–50</sup> These disparities may be worse than previously estimated,<sup>49</sup> and persist despite the fact that white and higher-income communities produce the majority of pollution through higher consumption of goods and services.<sup>51</sup> Low-wealth households may also experience higher levels of harmful indoor air pollution from gas-powered stoves and appliances (Case Study on Health and Climate Impacts of Methane Gas in Buildings).

\* Air pollution from fossil fuel combustion includes particulate matter less than 2.5 (PM<sub>2.5</sub>) or 10 (PM<sub>10</sub>) microns, nitrogen dioxide (NO<sub>2</sub>), nitric oxide (NO), sulfur dioxide (SO<sub>2</sub>), carbon monoxide (CO), traffic-related air pollution, polycyclic aromatic hydrocarbons (PAH), and ground-level ozone (formed through chemical reactions from precursors from fossil fuel burning and other sources that include nitrogen oxides [NO<sub>x</sub>] and volatile organic compounds [VOCs] in the presence of sunlight).

§ Bolded indicators in the text represent data from the 2022 global *Lancet* Countdown report. The indicator data can be found in Table 1. For details about the indicators and methodology, see the 2022 global *Lancet* Countdown report and Appendix.

## **Box 2. Exposure to PM<sub>2.5</sub> Causes Heart Disease and Childhood Asthma**

Immense scientific evidence is required to establish a causal link between an exposure and a disease. The American Heart Association determined that heart disease, which is the leading cause of death in the U.S., can be caused by exposure to PM<sub>2.5</sub>.<sup>40,41</sup> The American Thoracic Society similarly determined that long-term exposure to PM<sub>2.5</sub>, especially from road traffic, causes childhood asthma.<sup>42</sup> In a landmark 2021 case in the United Kingdom, air pollution was listed for the first time as a cause of death for a 9-year old girl with asthma,<sup>43</sup> and there is a proposed bill in Utah to allow air pollution to be listed as a cause of death.<sup>44</sup> Thus, air pollution is a risk factor—similar to high blood pressure and diet—that can be modified to improve heart and lung health.<sup>45</sup>

## **CLIMATE CHANGE WORSENS AIR QUALITY, INCREASING HEALTH RISKS.**

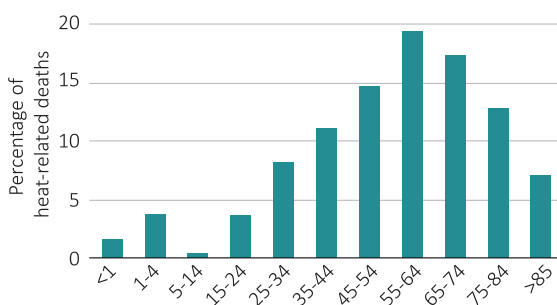
Climate change worsens air quality by increasing the risk of wildfires, drought, elevated pollen levels, and extreme heat. Wildfire smoke accounts for a quarter of PM<sub>2.5</sub> in the U.S. and as much as half in some Western states.<sup>52</sup> Droughts increase dust, which is a major air pollutant associated with health harms such as cardiovascular illness and possibly Valley Fever.<sup>53,54</sup> Extended pollen seasons and higher levels of airborne pollen<sup>55</sup> are associated with respiratory health harms like asthma.<sup>56</sup> Higher temperatures increase the formation of ground level ozone, a pollutant that irritates lungs and results in more hospitalization and death.<sup>57–60</sup> Climate change can also worsen air quality by slowing air pollutant removal in regions experiencing drought, increasing air stagnation, and lengthening the time between rainfall events that remove pollutants from the air.<sup>57</sup> Air pollution and heat interact to worsen health outcomes.<sup>61</sup>

# Heat-Related Illness

Climate change is causing the U.S. to experience hotter (Indicator 1.1.1, Table 1)<sup>1</sup> and longer warm seasons, and more frequent, longer, and more intense heat waves.<sup>62</sup> 2021 was the sixth-warmest year on record,<sup>63</sup> and 2022 saw record-breaking heat waves across the U.S.<sup>64</sup> Average global temperatures are now 2°F (1.1°C) above pre-industrial levels,<sup>65</sup> and there is a 50% likelihood that the world will at least temporarily pass 2.7°F (1.5°C) within the next five years.<sup>66</sup> This 1.5°C threshold is the aspirational goal of the Paris Climate Agreement, but every fraction of a degree is predicted to be associated with more devastating impacts on physical and mental health.<sup>2</sup>

## EXTREME HEAT HARMS HEALTH IN MANY WAYS.

Everyone is at risk of dying from heat (Figure 1).<sup>67</sup> Heat is the leading cause of weather-related deaths in the U.S.,<sup>68</sup> yet official statistics often underestimate the true burden. Recent research aimed at providing a more complete picture estimated that there are 12,000 heat-related deaths each year in the U.S.<sup>69</sup> The economic cost of these premature heat-related deaths is significant (Indicator 4.1.2, Table 1).<sup>1</sup>



**Figure 1. Heat-Related Deaths by Age in the U.S. 2018 - 2020**  
A total of 3,066 heat-related deaths occurred in the U.S. from 2018 to 2020. These deaths include only those defined by one of three medical diagnosis codes that attribute death to an exposure to natural heat (ICD10 codes X30, P81.0 or T67), thus missing many other pathways. This figure presents the percentage of total deaths that occurred within each age range; it does not provide heat-related mortality rates by age group. As the age groups presented above are not uniform, the figure may visually under-represent mortality in the youngest age groups.<sup>67</sup>

Heat exposure causes widespread health harms<sup>70,71</sup> including: acute and chronic heart, lung, and kidney disease;<sup>71–73</sup> adverse mental health outcomes such as mood and anxiety disorders, schizophrenia, and increased suicide risk;<sup>74–76</sup> increased risk of preterm birth and stillbirth;<sup>76</sup> disrupted physical activity patterns;<sup>77</sup> worsened sleep;<sup>3</sup> heightened risk of seasonal allergies with complications for those with underlying lung conditions;<sup>78,79</sup> and increased emergency department visits.<sup>80</sup> Extreme heat also results in lost labor hours and consequently lost income (Indicators 1.1.4, 4.1.3, Table 1).<sup>1</sup>

Systemic social and economic inequities shape a person’s susceptibility, exposure, and adaptive capacity to extreme heat (Appendix Table A), and drive disparities in heat-related illness and mortality.

## SUSCEPTIBILITY TO HEAT-RELATED ILLNESS IS HEIGHTENED AMONG SENSITIVE POPULATIONS.

Children, pregnant people, older adults, and people living with illness are uniquely at risk from extreme heat (Appendix Table A). Young children and older adults are disproportionately harmed by warming temperatures (Indicators 1.1.2, 1.1.5, Table 1)<sup>1</sup> and older adults are disproportionately affected by heat-related morbidity and mortality (Figure 1). Extreme heat contributes to adverse physical and mental health impacts for children,<sup>38,81</sup> impairs children’s ability to learn in school,<sup>82</sup> and makes it harder for them to safely play outdoors, undermining their physical and mental health and development. Extreme heat exposure in pregnancy is associated with preterm birth, low birth weight, and stillbirth.<sup>83,84</sup>

## STRUCTURAL INEQUITIES LEAD TO HIGHER EXTREME HEAT EXPOSURE IN SOME COMMUNITIES.

While everyone is at risk for heat-related illness, greater exposure to extreme heat leads to higher risk for some people (Appendix Table A). Economically and racially discriminatory policies shape extreme heat exposure (Box 1). Systemic marginalization and inequitable community investment practices result in urban design patterns, such as less green space, that amplify heat in some communities. People living in communities of color are more exposed to extreme heat and therefore more heavily impacted by heat-related sickness and death.<sup>85</sup> Areas with the largest projected increases in heat-related mortality are 40% more likely to be home to Black and African American people.<sup>86</sup> Heat-related mortality is also higher for non-U.S. citizens.<sup>87</sup> Exposure to extreme heat is higher for outdoor workers,<sup>72,88</sup> people experiencing homelessness,<sup>89,90</sup> and people who are incarcerated.<sup>91</sup>

## ADAPTATION STRATEGIES CAN PREVENT HEAT-RELATED HARM BUT ARE NOT EQUITABLY AVAILABLE TO ALL.

Strategies exist at the individual, household, neighborhood, and city levels that can protect against extreme heat.<sup>92</sup> Yet there is inequitable access to effective, reliable, and affordable cooling strategies, including both community-level strategies that cool neighborhoods (e.g., greenspace) and adaptive responses to extreme heat events (e.g., cooling centers) (Appendix Table A).<sup>93,94</sup> For example, in Philadelphia, there is less tree cover in communities of color.<sup>95</sup> Resource constraints may increase exposure to extreme heat and the risk of heat-related illness (Box 3). For example, low-wealth households are less able to



access and afford health protective cooling (e.g., heat pumps, air conditioning).<sup>70,96,97</sup> More affordable cooling options, such as ventilation from fans or the outdoor wind, can be ineffective at very high temperatures.<sup>92,98</sup>

#### **EXTREME HEAT RISK FACTORS CAN INTERSECT, COMPOUNDING HARM.**

Many people and communities face multiple intersecting risks in which racial, economic, gender, environmental, and other social injustices overlap to deepen inequity. Climate threats further compound and amplify these risks. For example, due to the experience of chronic structural racism, maternal mortality rates are highest for Black and African American people in the U.S.<sup>99,100</sup> Economic and racial injustice lead to Black and African American communities facing greater susceptibility and exposure to extreme heat. These overlapping forms of injustice compound, such that the association between extreme heat exposure during pregnancy and preterm birth may be stronger for Black and African American people and those in low-wealth communities.<sup>101,102</sup>

### **Box 3. The Energy Equity Gap Burdens Communities of Color and Low-Wealth Communities**

The energy equity gap is a measure of differences in the threshold temperature at which households begin to use air conditioning (A/C). A/C is an energy-intensive cooling method that worsens climate change and contributes to warmer temperatures in urban communities (2019 U.S. Brief). However, A/C may also be necessary in extremely high temperatures and in the most impacted communities. As a result of financial constraints, many households may limit their use of electricity by not using or by deferring the use of A/C even under hot temperatures. This can increase the risk of heat-related illness. A recent study found a large energy equity gap such that low-wealth, and Black and African American households have higher temperature thresholds to begin using A/C compared to higher-income and white households.<sup>96</sup> Energy insecurity, or the inability to meet energy needs such as for cooling, is higher in Black and Hispanic households than white households.<sup>103,104</sup> Low-wealth households that depend on electricity-powered cooling may face a higher economic burden as the need for cooling increases with rising temperature. The energy equity gap and the disproportionate economic costs of cooling<sup>105</sup> may be further exacerbated by the rising costs of energy and the economic challenges of 2022.

Recent legislative efforts, such as the Inflation Reduction Act, seek to reduce energy costs and reduce reliance on high-emission cooling strategies through funding for home electrification and energy efficiency retrofits in low-income and affordable housing.<sup>106</sup> There are also sustainable and low-energy strategies to reduce dependence on A/C and reduce energy poverty such as through urban greening and other community design strategies that cool neighborhoods (Figure 3).



# Infectious Disease

Early evidence suggests that climate change may be linked to increases in the incidence of nearly 60% of infectious and pathogenic diseases worldwide, and there could be more than 1,000 different pathways by which climate change can increase the incidence of human infectious diseases.<sup>107</sup>

## WATER-BORNE DISEASE THREATS ARE INCREASING.

Warmer waters, in addition to other factors, create conditions favorable for the transmission of some infectious diseases. *Vibrio* spp. are a genus of bacteria that can cause different illnesses, including some with gastrointestinal symptoms and necrotizing fasciitis. Increasing *Vibrio* spp. habitat suitability is linked to warming water temperatures and changes in precipitation patterns.<sup>108,109</sup> The environmental suitability\* of *Vibrio* spp. has been increasing in U.S. coastal waters (Indicator 1.3, Table 1).<sup>1</sup>

The rising threat of heavy flooding events increases the risk of stormwater overflow into sewer water systems, particularly combined sanitary and storm sewer systems,<sup>110</sup> contaminating drinking and recreational

waters with dangerous levels of harmful bacteria.<sup>111–113</sup> This can lead to increased exposure to pathogens like Norovirus, *E. coli*, Salmonella, and Shigella<sup>108,114</sup> and can result in higher rates of gastrointestinal illness. This has been observed in emergency department visits after flooding events in the U.S. (Critical Insight Box on Sea Level Rise and Health).<sup>115,116</sup>

## EXPANSION OF VECTOR-BORNE DISEASES.

Climate change is contributing to disease-transmitting ticks and mosquitoes being able to live and thrive in new parts of the U.S. for a greater portion of the year.<sup>2,4</sup> This has already contributed to increased vector-borne disease in the U.S., including Lyme disease<sup>117</sup> and West Nile.<sup>118</sup> In addition, the length of the season in which conditions are suitable for transmission of dengue, a vector-borne disease not currently common in most areas of the U.S., is increasing along with its contagiousness (as measured through the basic reproductive number,  $R_0$ ) (Indicator 1.3, Table 1).<sup>1</sup> Overall, children and pregnant people can be more susceptible to vector-borne diseases and resulting health complications.<sup>38,119</sup>

# Mental Health Impacts

Climate change is harming mental health and well-being.<sup>2,120</sup> Climate change impacts, including disasters, heat, and economic losses, are associated with increased risk of depression, stress, post-traumatic stress disorder (PTSD), anxiety, grief, substance abuse, disempowerment, and hopelessness.<sup>121</sup> Susceptibility to the mental health impacts of climate change is higher for communities with close ties to the land, including people living in rural and agricultural areas and Indigenous

communities, and for children and young people.<sup>4,122</sup> For additional susceptibility factors, see Appendix Table A. Systemic stressors, such as economic insecurity and discrimination, can exacerbate climate change threats to mental health and hinder equitable access to protective services and resources. There are individual, community, health care, public health, and policy solutions that can respond to and reduce the mental health impacts of climate change (Figure 2).<sup>123–125</sup>

\* Habitat “suitability” is the likelihood that a species, such as bacteria, can live in an environment in a given location based on factors it needs to survive and thrive.

# THE COMPOUNDING EFFECTS OF CLIMATE CHANGE ON MENTAL HEALTH AND WELL-BEING



## 1 Climate Change Threats

Climate change impacts—like worsening heat, extreme weather, and poor air quality—affect everyone.

## 2 Mental Health and Well-being Impacts

Climate change is associated with depression, stress, anxiety, grief, substance abuse, disempowerment, hopelessness, PTSD (post-traumatic stress disorder) and other impacts.

## 3 Systemic Stressors

Systemic racism and gender, economic, and environmental injustice compound with climate change to put some communities at greater risk of mental health harm.

## 4 Susceptible Groups

Communities that are most impacted include: older adults, people experiencing homelessness, pregnant people, low-wealth communities, Indigenous communities, some communities of color, people living with disabilities, and people living with pre-existing illness, gender diverse and LGBTQ persons.

## 5 Children and Youth

Climate change is creating new risks and worries for children and adolescents, increasing anxiety around what their future will look like and whether they have the power to shape it.

## 6 Protective Factors

Some communities have access to resources that protect them from the stress of climate change, such as safe housing, adequate nutrition and sleep, access to nature and a sense of belonging.

## 7 Barriers to Resilience

Communities harmed by systemic injustice do not have the same access to buoying economic and social resources.

## 8 Solutions to Build Resilience

There are many things that can be done in our schools, communities, and policy choices to foster mental health and well-being. Examples include: accessible, affordable mental health care; equitable access to nature, safe housing and economic resources; opportunities for community and civic engagement; and strong community preparedness and disaster response services.

Figure 2. Compounding Effects of Climate Change on Mental Health and Well-Being. <sup>74,81,85,90,126–148</sup>

# Policy Recommendations to Advance Health and Equity in the U.S. Climate Change Response

---

The U.S. is at a turning point on climate change, and there are reasons for optimism. The 2022 Inflation Reduction Act (IRA) opened the door to nearly \$370 billion in federal funding for cleaner, healthier energy and transportation systems; sustainable agriculture and forests; community-led resilience initiatives; and programs that address air and water pollution.<sup>106</sup> If fully implemented, the IRA is projected to reduce U.S. GHG emissions by around 40% below 2005 levels by 2030<sup>149,150</sup> and benefit health by reducing air pollution.<sup>149</sup> The 2021 Infrastructure Investment and Jobs Act has the potential to contribute to GHG emissions reductions, and the 2022 CHIPS and Science Act will invest in clean energy technology research and development. Cities and states around the country are also passing new laws and scaling up investments in climate change action (Focus on Regions).

It remains to be seen how much these investments will impact health

and environmental targets. Many U.S. policies remain inconsistent with health and equity goals, such as the IRA's expansion of oil and gas leasing on public lands and the substantial state and federal subsidies for fossil fuels. The fossil fuel industry continues to influence climate policy and hinder climate action.<sup>151,152</sup> In its 2022 ruling on *West Virginia v. Environmental Protection Agency (EPA)*, the U.S. Supreme Court limited the EPA's ability to take a system-wide approach to regulating carbon dioxide emissions from power plants.<sup>153</sup>

To keep temperature rise within livable bounds and protect against catastrophic health impacts, it is vital to reduce emissions now. This Brief outlines five policy recommendations to protect health and improve health equity in our national response to climate change. These strategies will reduce air pollution, minimize climate change-related health threats, and improve community safety and resilience.



## Achieve a zero-emission energy sector and prioritize air quality improvements in the most impacted communities.

---

The U.S. must rapidly implement policies to meet the goal of limiting global warming to 1.5°C, which requires an estimated 57% to 63% reduction in its GHG emissions by 2030.<sup>154</sup> Cutting emissions in the energy sector, which accounts for a quarter of U.S. GHG emissions,<sup>155</sup> is critical. One study finds that the elimination of PM<sub>2.5</sub> emissions from U.S. energy-related sources would prevent over 50,000 premature deaths each year and provide savings of more than \$600 billion annually from avoided illness and death.<sup>32</sup>

The IRA includes billions of dollars to expand wind and solar energy and help U.S. households and communities transition to clean energy.<sup>106</sup> Greater investments by all levels of government will also be needed in clean energy development, storage, and transmission. This is essential to meet the U.S. commitment to cut GHG emissions in half by 2030, reach 100% clean electricity by 2035, and achieve net-zero emissions by 2050.<sup>156</sup> The cost of renewable energy has fallen, making clean energy

competitive with conventional fossil fuel options.<sup>157</sup>

Policy implementation can prioritize health and equity by focusing the clean energy transition in the most impacted communities. State, tribal, local, and territorial governments can expand equitable access to clean and healthy energy by setting 100% clean energy standards and legislating interim clean electricity targets; targeting clean energy infrastructure and investments in disproportionately affected communities; making subsidies for clean energy available to low-wealth, rural, and communities of color; adopting strong building electrification codes to accelerate implementation of home electrification and energy efficiency retrofits; and investing in renewable energy microgrids and other forms of community energy. The health care sector also has a substantial role to play in decarbonization (Critical Insight Box on Health Care Sector Role in Emissions Reductions).

## 2

## Accelerate the transition to a zero-emission transportation system that equitably benefits health.

The transportation sector is the largest contributor to GHG emissions in the U.S., accounting for around 27% of U.S. emissions in 2020.<sup>155</sup> In 2019, electricity represented only 0.1% of total fuel use for road travel. Although this was a 24% increase in electricity use in transportation from the prior year, fossil fuel use in road transport fell by just 0.8% in 2019 (Indicator 3.4, Table 1).<sup>1</sup>

Transportation-related air pollution disproportionately burdens communities of color and low-wealth communities.<sup>30</sup> These communities also bear a disproportionate burden of pedestrian and bicycle fatalities;<sup>158</sup> depend more heavily on public transit systems;<sup>159,160</sup> and benefit less from electric vehicle tax credits<sup>161,162</sup> and investments in charging infrastructure.<sup>163,164</sup>

The U.S. is making historic investments to incentivize the manufacture, purchase, and use of electric vehicles; improve community walkability and road safety; and address the harmful impacts of traffic and transportation infrastructure on community life and livelihood (community severance).<sup>106</sup> However, the IRA does not include sought-after provisions such as tax incentives for electric bicycles, subsidies for public transit riders, or funding for public transportation system operating budgets and fleet electrification.<sup>165</sup>

States can prioritize health equity in transportation by increasing investment in zero-emission public transit systems and active transportation infrastructure, like sidewalks and bike lanes, and by improving traffic safety. This will make it more affordable, convenient, and safe to use public and active transportation – improving air quality, increasing physical activity, and expanding access to essential services.<sup>159,166,167</sup>

Additional strategies to maximize health in the transition to zero-emission transportation include: increasing state incentives for electric vehicles to accelerate access in communities most affected by air pollution; implementing more stringent fuel efficiency and pollution standards to reduce health-harming transportation emissions, such as through adoption of California’s clean vehicle standards;<sup>168</sup> requiring stronger state and local transportation emissions reduction targets and enhanced emissions tracking; and ensuring rural communities have access to clean and reliable transportation.

### Box 4. Partnering with Communities is Critical to Maximize Health Equity in Climate Policy Development and Implementation.

Without an intentional focus on equity, climate change policies can create new risks, harm health, and deepen health inequities.<sup>151,169</sup> Policies must be developed and executed in meaningful collaboration with communities to avoid harmful outcomes (e.g., inequitable distribution of air pollution; displacement and gentrification) and ensure equitable access to and benefits from mitigation and adaptation.<sup>94,170</sup> Communities of color, Indigenous communities, and communities directly impacted by policy decisions must be engaged, in addition to the health community, in all stages of policy development and implementation. Policymakers should additionally integrate traditional knowledge and lived experience in the development of climate solutions.

## 3

## End the development of all new fossil fuel infrastructure and phase out fossil fuel subsidies as rapidly as possible, while ensuring a just transition.

The U.S. is the world’s leading producer of oil<sup>171</sup> and methane gas.<sup>172</sup> Current levels of fossil fuel production are inconsistent with global climate goals and must rapidly decline.<sup>173–176</sup>

Policymakers at all levels should end subsidies to fossil fuel companies –conservatively estimated at around \$20 billion annually in the U.S.<sup>177</sup> These subsidies profit the fossil fuel industry,<sup>178</sup> enable more fossil fuel

exploration and development,<sup>179</sup> lock in reliance on polluting energy, and hinder investments in clean energy.<sup>180</sup> The IRA, by opening public lands and waters for oil and gas leases and increasing subsidies for carbon capture technologies, also risks extending fossil fuel dependence.

Fossil fuel infrastructure is disproportionately placed in Black and

African American, Indigenous, other communities of color, and low-wealth communities,<sup>21</sup> driving disproportionate adverse health impacts (Case Study on Health Impacts of Pollution from Oil and Gas Production).<sup>181–184</sup> Ending new fossil fuel leases, infrastructure projects, and exports will achieve a safer climate future and will directly and immediately improve air quality and protect health. Stronger emission standards, improved emissions monitoring, and reduced emissions of methane and other harmful pollutants from oil and gas production can better protect the health of communities living near fossil fuel infrastructure.

This must be accompanied by investments to support workers and communities in the just and equitable transition to renewable energy.<sup>185,186</sup> This can occur through support for the people and commu-

nities who will be economically impacted by the energy transition and those who live near fossil fuel infrastructure, for example through targeted workforce development, and requirements for local hiring, prevailing wages, and union jobs in clean energy development projects.

Decarbonization efforts must prioritize actual emission reductions today over achieving theoretical future negative emissions through carbon capture and storage/sequestration or carbon dioxide removal technologies. These technologies are costly, remain under-developed and unproven at scale, and can extend the use of fossil fuels.<sup>151</sup> If implemented without attention to health, these approaches may result in additional health harms and miss opportunities to maximize near-term, local improvements in air quality (Critical Insight Box on Health and Equity Considerations for Carbon Capture and Storage).

## 4 Expand investments in adaptation to build healthy, equitable, and resilient communities.

As temperatures rise, adaptation efforts that build community and health systems resilient to climate change are increasingly important (Box 4). Policies can mitigate the health risks of climate hazards<sup>187,188</sup> by expanding green infrastructure, tree cover, and cool roofs and pavement;<sup>92,189,190</sup> designing neighborhoods to reduce traffic congestion and increase active transport;<sup>158,191,192</sup> expanding regenerative agricultural practices (Critical Insight Box on Climate Change and the U.S. Food System);<sup>193</sup> strengthening the resilience of public infrastructure including schools,<sup>194</sup> community energy systems,<sup>195,196</sup> and health systems;<sup>70</sup> and building social cohesion (Figure 3).<sup>197</sup>

These strategies have multiple health benefits. For instance, more green space cools urban areas, reduces air and water pollution, assists with flood control, provides space for recreation, improves mental health, increases physical activity, and reduces all-cause mortal-

ity.<sup>132,198–201</sup> In a study of 50 urban centers in the U.S., just half were classified as moderately green or above in 2021 (**Indicator 2.2.3**, Table 1).<sup>1</sup> State and federal investments in adaptation should prioritize the health and well-being of communities most susceptible to climate risks by investing directly in the most impacted communities.

Housing, transportation, energy, agriculture, and other agencies throughout the U.S. government are engaged in a whole of government approach to climate change. Public health agencies must work in coordination with these agencies – and with impacted communities – to maximize the health equity benefits of these efforts. Public health entities lack the levels of funding needed to address climate change.<sup>202</sup> Expanding funding for climate change and health will enable health partners to implement community climate resilience programs and participate actively in climate policy implementation.

## 5 Scale up U.S. contributions to global climate finance to support global health equity.

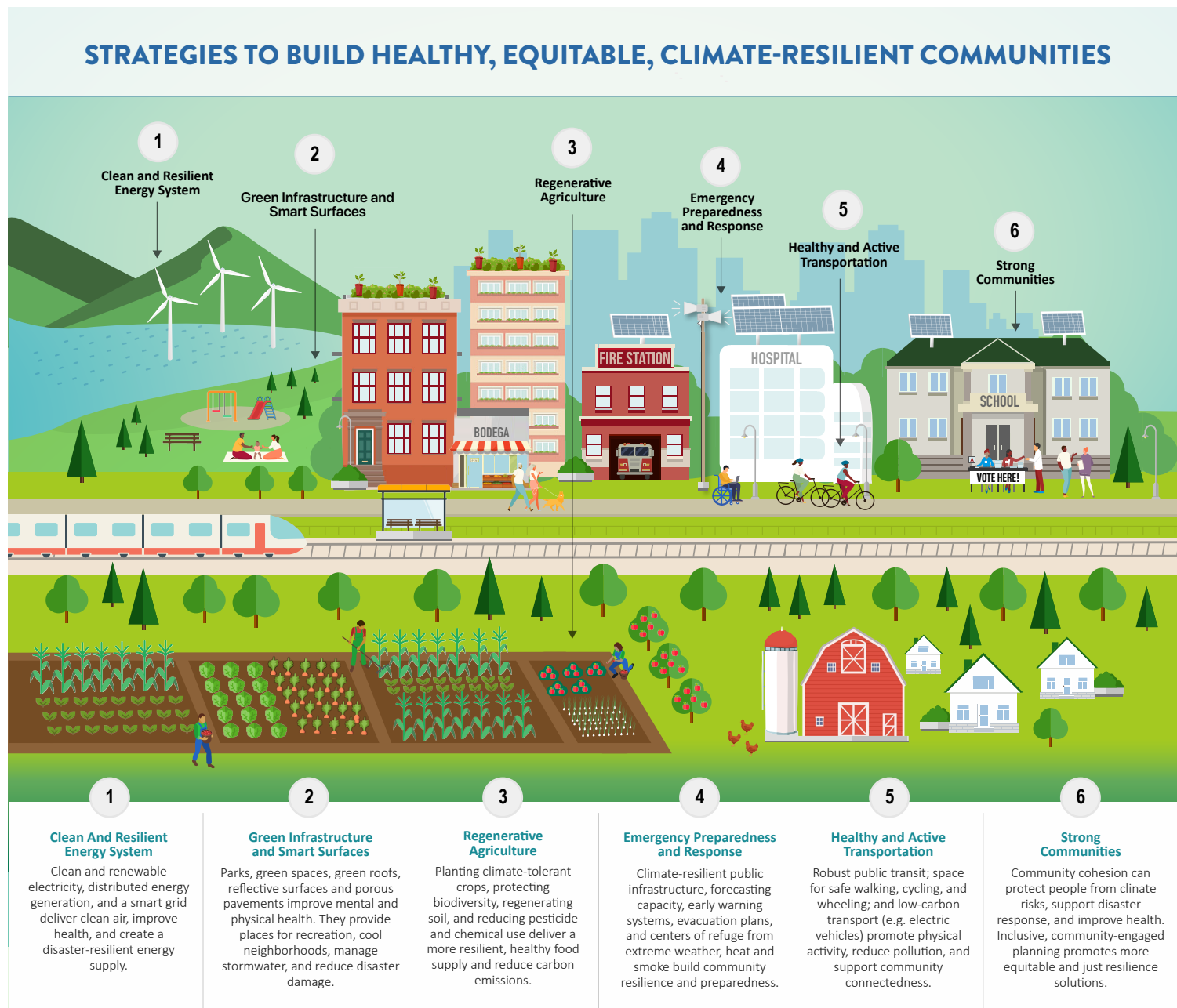
Achieving the Paris Agreement targets will benefit health in the U.S. and globally,<sup>226</sup> yet is only feasible with rapid emissions reductions in all high-emitting countries. Scaled-up investment in global climate action is essential to protect health and achieve global climate goals.<sup>151</sup> The U.S. is historically the world's biggest contributor to cumulative GHG emissions,<sup>227</sup> and in 2019 was the second-greatest emitter of CO<sub>2</sub> (**Indicator 4.2.5**, Table 1).<sup>1</sup>

The U.S. must meet its commitment to support decarbonization, adaptation, and a just transition at home and in the countries most impacted by climate change. In 2020, high-income countries provided around US\$ 83 billion of climate finance to low- and middle-income countries.<sup>228</sup> This is less than the US\$ 100 billion commitment made in the Paris Agreement, a commitment that already falls significantly short of the need. The U.S. contributes proportionally less global climate finance than other high-income countries.<sup>229</sup>



President Biden has committed to significantly increase U.S. contributions to global mitigation and adaptation, such as through the President’s Emergency Plan for Adaptation and Resilience.<sup>230</sup> Congress must act to fulfill and expand these pledges.

International climate investments made by the U.S. can promote health and equity by supporting programs that reduce health-harming air pollution in the most impacted communities, mitigate and respond to climate change-related health threats, build climate-resilient health systems, and support the health response to climate-related disasters.



**Figure 3. Strategies to Build Healthy, Equitable, Climate-Resilient Communities.**<sup>152,192,193,197,200,203–225</sup>

## Conclusion

Climate change is already harming the health of people across the U.S., and rapidly transitioning to a zero-emission economy is essential to protect health and reduce existing inequities. The coming years present an opportunity to shape historic climate investments. If implemented with care, climate change policy can benefit health today and ensure a

healthier and more equitable future for all people in the U.S., especially those who are most harmed by climate-related hazards. It is incumbent that the health community be part of climate change policy development and implementation to ensure that these efforts promote health, equity, and a just transition.

# References

1. Romanello M, Di Napoli C, Drummond P, et al. The 2022 report of the Lancet Countdown on health and climate change: health at the mercy of fossil fuels. *Lancet* 2022; 399.
2. Pörtner H-O, Roberts DC, Tignor M, et al. Climate Change 2022: Impacts, Adaptation and Vulnerability. Cambridge, UK and New York, NY, USA: 2022 Intergovernmental Panel on Climate Change, 2022.
3. Minor K, Bjerre-Nielsen A, Jonasdottir SS, Lehmann S, Obradovich N. Rising temperatures erode human sleep globally. *One Earth* 2022; 5: 534–49.
4. USGCRP. Impacts, Risks, and Adaptation in the United States: Fourth National Climate Assessment, Volume II. Washington, DC, USA: U.S. Global Change Research Program, 2018.
5. National Centers for Environmental Information (NCEI). Climate at a Glance: National Time Series, Minimum Temperature. 2022; published online Sept. <https://www.ncei.noaa.gov/access/monitoring/climate-at-a-glance/national/rankings/110/tmin/202207>.
6. National Centers for Environmental Information (NCEI). U.S. Drought Monitor Update for July 12, 2022. 2022; published online July 14. <http://www.ncei.noaa.gov/news/us-drought-monitor-update-july-12-2022>.
7. Williams AP, Cook BI, Smerdon JE. Rapid intensification of the emerging southwestern North American megadrought in 2020–2021. *Nat Clim Chang* 2022; 12: 232–4.
8. Goss M, Swain DL, Abatzoglou JT, et al. Climate change is increasing the likelihood of extreme autumn wildfire conditions across California. *Environ Res Lett* 2020; 15: 094016.
9. Pfleiderer P, Nath S, Schleussner C-F. Extreme Atlantic hurricane seasons made twice as likely by ocean warming. *Weather Clim Dynam* 2022; 3: 471–82.
10. Keellings D, Hernández Ayala JJ. Extreme rainfall associated with Hurricane Maria over Puerto Rico and its connections to climate variability and change. *Geophysical Research Letters* 2019; 46: 2964–73.
11. Wang S-Y, Zhao L, Yoon J-H, Klotzbach P, Gillies RR. Quantitative attribution of climate effects on Hurricane Harvey's extreme rainfall in Texas. *Environ Res Lett* 2018; 13: 054014.
12. Walsh JE, Thoman RL, Bhatt US, et al. The high latitude marine heat wave of 2016 and its impacts on Alaska. *Bulletin of the American Meteorological Society* 2018; 99: 539–43.
13. Patricola CM, Wehner MF. Anthropogenic influences on major tropical cyclone events. *Nature* 2018; 563: 339–46.
14. Kessler SR, Simon TR, Zwald ML, et al. Vital signs: Changes in firearm homicide and suicide rates — United States, 2019–2020. *MMWR Morb Mortal Wkly Rep* 2022; 71: 656–63.
15. Bauchner H, Rivara FP, Bonow RO, et al. Death by gun violence—A public health crisis. *JAMA* 2017; 318: 1763–4.
16. Bailey ZD, Krieger N, Agénor M, Graves J, Linos N, Bassett MT. Structural racism and health inequities in the USA: Evidence and interventions. *The Lancet* 2017; 389: 1453–63.
17. Braveman PA, Arkin E, Proctor D, Kauh T, Holm N. Systemic and structural racism: definitions, examples, health damages, and approaches to dismantling. *Health Affairs* 2022; 41: 171–8.
18. Lancet Countdown, 2019: 2019 Lancet Countdown on Health and Climate Change Policy Brief for the United States of America. Salas RN, Knappenberger P, Hess JJ. London, United Kingdom: Lancet Countdown U.S. Policy Brief.
19. Bailey ZD, Feldman JM, Bassett MT. How structural racism works — racist policies as a root cause of U.S. racial health inequities. *New England Journal of Medicine* 2021; 384: 768–73.
20. Swope CB, Hernández D, Cushing LJ. The Relationship of Historical Redlining with Present-Day Neighborhood Environmental and Health Outcomes: A Scoping Review and Conceptual Model. *J Urban Health* 2022; published online Aug 1. DOI:10.1007/s11524-022-00665-z.
21. Gonzalez DJX, Nardone A, Nguyen AV, Morello-Frosch R, Casey JA. Historic redlining and the siting of oil and gas wells in the United States. *J Expo Sci Environ Epidemiol* 2022; 1–8.
22. Lane HM, Morello-Frosch R, Marshall JD, Apte JS. Historical redlining is associated with present-day air pollution disparities in U.S. cities. *Environ Sci Technol Lett* 2022; 9: 345–50.
23. Locke DH, Hall B, Grove JM, et al. Residential housing segregation and urban tree canopy in 37 US Cities. *npj Urban Sustain* 2021; 1: 1–9.
24. Hoffman JS, Shandas V, Pendleton N. The effects of historical housing policies on resident exposure to intra-urban heat: A study of 108 US urban areas. *Climate* 2020; 8: 12.
25. Lee EK, Donley G, Ciesielski TH, et al. Health outcomes in redlined versus non-redlined neighborhoods: A systematic review and meta-analysis. *Social Science & Medicine* 2022; 294: 114696.
26. Mujahid MS, Gao X, Tabb LP, Morris C, Lewis TT. Historical redlining and cardiovascular health: The multi-ethnic study of atherosclerosis. *Proceedings of the National Academy of Sciences* 2021; 118: e2110986118.
27. American Lung Association. State of the Air 2022: Tracking Air Pollution and Championing Clean Air. Chicago, Illinois, USA, 2022.
28. Liu C, Chen R, Sera F, et al. Ambient particulate air pollution and daily mortality in 652 cities. *New England Journal of Medicine* 2019; 381: 705–15.
29. Shi L, Rosenberg A, Wang Y, et al. Low-concentration air pollution and mortality in American older adults: A national cohort analysis (2001–2017). *Environ Sci Technol* 2022; 56: 7194–202.
30. Tessum CW, Paoletta DA, Chambliss SE, Apte JS, Hill JD, Marshall JD. PM<sub>2.5</sub> pollutants disproportionately and systemically affect people of color in the United States. *Science Advances* 2021; 7: eabf4491.
31. Buonocore JJ, Luckow P, Norris G, et al. Health and climate benefits of different energy-efficiency and renewable energy choices. *Nature Clim Change* 2016; 6: 100–5.
32. Mailloux NA, Abel DW, Holloway T, Patz JA. Nationwide and regional pm<sub>2.5</sub>-related air quality health benefits from the removal of energy-related emissions in the United States. *GeoHealth* 2022; 6: e2022GH000603.
33. Carley S, Konisky DM. The justice and equity implications of the clean energy transition. *Nat Energy* 2020; 5: 569–77.
34. Wang T, Jiang Z, Zhao B, et al. Health co-benefits of achieving sustainable net-zero greenhouse gas emissions in California. *Nat Sustain* 2020; 3: 597–605.
35. Keswani A, Akselrod H, Anenberg SC. Health and clinical impacts of air pollution and linkages with climate change. *NEJM Evidence* 2022; 1: EVIDra2200068.
36. Boing AF, deSouza P, Boing AC, Kim R, Subramanian SV. Air Pollution, socioeconomic status, and age-specific mortality risk in the United States. *JAMA Network Open* 2022; 5: e2213540.
37. Brumberg HL, Carr KJ, Bole A, et al. Ambient air pollution: Health hazards to children. *Pediatrics* 2021; 147: e2021051484.
38. Perera F, Nadeau K. Climate change, fossil-fuel pollution, and children's health. *New England Journal of Medicine* 2022; 386: 2303–14.
39. Vohra K, Vodonos A, Schwartz J, Marais EA, Sulprizio MP, Mickley LJ. Global mortality from outdoor fine particle pollution generated by fossil fuel combustion: Results from GEOS-Chem. *Environmental Research* 2021; 195: 110754.
40. Kaufman JD, Elkind MSV, Bhatnagar A, et al. Guidance to reduce the cardiovascular burden of ambient air pollutants: A policy statement from the American Heart Association. *Circulation* 2020; 142: e432–47.
41. Brook RD, Franklin B, Cascio W, et al. Air pollution and cardiovascular disease. *Circulation* 2004; 109: 2655–71.
42. Thurston GD, Balmes JR, Garcia E, et al. Outdoor air pollution and new-onset airway disease. An official American Thoracic Society workshop report. *Annals ATS* 2020; 17: 387–98.
43. Barlow P. Regulation 28: Report to Prevent Future Deaths (1). 2021; published online April. <https://www.judiciary.uk/wp-content/uploads/2021/04/Ella-Kissi-Debrah-2021-0113-1.pdf>.
44. Williams C. Death Certificate Amendments. 2022 <https://le.utah.gov/~2022/bills/static/HB0109.html>.
45. Brauer M, Casadei B, Harrington RA, Kovacs R, Sliwa K, null null. Taking a stand against air pollution—the impact on cardiovascular disease. *Circulation* 2021; 143: e800–4.
46. United States Environmental Protection Agency. Our Nation's Air: Trends Through 2021. 2022 <https://gispub.epa.gov/air/trendsreport/2022/#home>.



47. Bravo MA, Warren JL, Leong MC, *et al.* Where is air quality improving, and who benefits? A study of PM<sub>2.5</sub> and ozone over 15 years. *American Journal of Epidemiology* 2022; 191: 1258–69.
48. Jbaily A, Zhou X, Liu J, *et al.* Air pollution exposure disparities across US population and income groups. *Nature* 2022; 601: 228–33.
49. Daouda M, Henneman L, Goldsmith J, Kioumourtoglou M-A, Casey JA. Racial/ethnic disparities in nationwide PM<sub>2.5</sub> concentrations: Perils of assuming a linear relationship. *Environmental Health Perspectives*; 130: 077701.
50. Liu J, Clark LP, Bechle MJ, *et al.* Disparities in air pollution exposure in the United States by race/ethnicity and income, 1990–2010. *Environmental Health Perspectives*; 129: 127005.
51. Tessum CW, Apte JS, Goodkind AL, *et al.* Inequity in consumption of goods and services adds to racial–ethnic disparities in air pollution exposure. *Proceedings of the National Academy of Sciences* 2019; 116: 6001–6.
52. Burke M, Driscoll A, Heft-Neal S, Xue J, Burney J, Wara M. The changing risk and burden of wildfire in the United States. *Proceedings of the National Academy of Sciences* 2021; 118: e2011048118.
53. Achakulwisut P, Anenberg SC, Neumann JE, *et al.* Effects of increasing aridity on ambient dust and public health in the U.S. Southwest under Climate Change. *GeoHealth* 2019; 3: 127–44.
54. Gorris ME, Treseder KK, Zender CS, Randerson JT. Expansion of coccidioidomycosis endemic regions in the United States in response to climate Change. *GeoHealth* 2019; 3: 308–27.
55. Anderegg WRL, Abatzoglou JT, Anderegg LDL, Bielory L, Kinney PL, Ziska L. Anthropogenic climate change is worsening North American pollen seasons. *Proceedings of the National Academy of Sciences* 2021; 118: e2013284118.
56. Puvvula J, Poole JA, Gonzalez S, *et al.* Joint association between ambient air pollutant mixture and pediatric asthma exacerbations. *Environmental Epidemiology* 2022; 6: e225.
57. Fiore AM, Naik V, Leibensperger EM. Air quality and climate connections. *Journal of the Air & Waste Management Association* 2015; 65: 645–85.
58. Szopa S, Navik V, Adhikary B, *et al.* 2021: Short-Lived Climate Forcers. In Climate Change 2021: The Physical Science Basis. Contribution of Working Group I to the Sixth Assessment Report of the Intergovernmental Panel on Climate Change. Cambridge University Press, Cambridge, United Kingdom and New York, NY, USA.
59. Rajagopalan S, Al-Kindi SG, Brook RD. Air pollution and cardiovascular disease: JACC state-of-the-art review. *Journal of the American College of Cardiology* 2018; 72: 2054–70.
60. United States Environmental Protection Agency. Integrated Science Assessment (ISA) for Ozone and Related Photochemical Oxidants (Final Report, Apr 2020). Washington, DC, USA, 2020 <https://cfpub.epa.gov/ncea/isa/recordisplay.cfm?deid=348522>.
61. Hu X, Han W, Wang Y, *et al.* Does air pollution modify temperature-related mortality? A systematic review and meta-analysis. *Environmental Research* 2022; 210: 112898.
62. Environmental Protection Agency. Climate Change Indicators: Heat Waves. 2021; published online Feb 4. <https://www.epa.gov/climate-indicators/climate-change-indicators-heat-waves>.
63. National Centers for Environmental Information (NCEI). State of the Climate: Global Climate Report for Annual 2021. 2022 <https://www.ncei.noaa.gov/access/monitoring/monthly-report/global/202113>.
64. NASA Earth Observatory. A July of Extremes. 2022; published online Aug 2. <https://earthobservatory.nasa.gov/images/150152/a-july-of-extremes>.
65. IPCC, 2021: Summary for Policymakers. In: Climate Change 2021: The Physical Science Basis. Contribution of Working Group I to the Sixth Assessment Report of the Intergovernmental Panel on Climate Change. Cambridge, United Kingdom and New York, NY, USA: Cambridge University Press, 2021: 3–32.
66. World Meteorological Organization Lead Centre. Annual-to-Decadal Climate Prediction. 2022. <https://hadleyserver.metoffice.gov.uk/wmolc/>.
67. US Department of Health and Human Services, Centers for Disease Control and Prevention. QuickStats: Percentage distribution of heat-related deaths, by age group — national vital statistics system, United States, 2018–2020. *MMWR Morb Mortal Wkly Rep* 2022; 71. DOI:10.15585/mmwr.mm7124a6.
68. National Weather Service. Weather Related Fatality and Injury Statistics. 2021. <https://www.weather.gov/hazstat/>.
69. Shindell D, Zhang Y, Scott M, Ru M, Stark K, Ebi KL. The effects of heat exposure on human mortality throughout the United States. *GeoHealth* 2020; 4: e2019GH000234.
70. Patel L, Conlon KC, Sorensen C, *et al.* Climate change and extreme heat events: How health systems should prepare. *NEJM Catalyst*; 3: CAT.21.0454.
71. Ebi KL, Capon A, Berry P, *et al.* Hot weather and heat extremes: Health risks. *The Lancet* 2021; 398: 698–708.
72. Shi DS, Weaver VM, Hodgson MJ, Tustin AW. Hospitalised heat-related acute kidney injury in indoor and outdoor workers in the USA. *Occup Environ Med* 2022; 79: 184–91.
73. Cheng J, Xu Z, Bambrick H, *et al.* Cardiorespiratory effects of heatwaves: A systematic review and meta-analysis of global epidemiological evidence. *Environmental Research* 2019; 177: 108610.
74. Belova A, Gould CA, Munson K, *et al.* Projecting the suicide burden of climate change in the United States. *GeoHealth* 2022; 6: e2021GH000580.
75. Nori-Sarma A, Sun S, Sun Y, *et al.* Association between ambient heat and risk of emergency department visits for mental health among US adults, 2010 to 2019. *JAMA Psychiatry* 2022; 79: 341–9.
76. Obradovich N, Migliorini R, Paulus MP, Rahwan I. Empirical evidence of mental health risks posed by climate change. *Proc Natl Acad Sci U S A* 2018; 115: 10953–8.
77. Obradovich N, Fowler JH. Climate change may alter human physical activity patterns. *Nat Hum Behav* 2017; 1: 1–7.
78. Zhang Y, Steiner AL. Projected climate-driven changes in pollen emission season length and magnitude over the continental United States. *Nat Commun* 2022; 13: 1234.
79. Idroes NS, Lodge CJ, Erbas B, Douglass JA, Bui DS, Dharmage SC. A review of the respiratory health burden attributable to short-term exposure to pollen. *International Journal of Environmental Research and Public Health* 2022; 19: 7541.
80. Clement S, Mezzacapo M. The Vermont Climate Assessment 2021. Burlington, VT, USA: Gund Institute for Environment at the University of Vermont doi:10.18125/kowgvg.
81. Vergunst F, Berry HL. Climate change and children's mental health: A developmental perspective. *Clinical Psychological Science* 2022; 10: 767–85.
82. Park RJ, Behrer AP, Goodman J. Learning is inhibited by heat exposure, both internationally and within the United States. *Nat Hum Behav* 2021; 5: 19–27.
83. Bekkar B, Pacheco S, Basu R, DeNicola N. Association of air pollution and heat exposure with preterm birth, low birth weight, and stillbirth in the US: A Systematic Review. *JAMA Network Open* 2020; 3: e208243.
84. Chersich MF, Pham MD, Areal A, *et al.* Associations between high temperatures in pregnancy and risk of preterm birth, low birth weight, and stillbirths: Systematic review and meta-analysis. *BMJ* 2020; 371: m3811.
85. Berberian AG, Gonzalez DJX, Cushing LJ. Racial disparities in climate change-related health effects in the United States. *Curr Envir Health Rpt* 2022; 9: 451–64.
86. Environmental Protection Agency. Climate Change and Social Vulnerability in the United States: A Focus on Six Impacts. U.S. Environmental Protection Agency, EPA 430-R-21-003, 2021 [https://www.epa.gov/system/files/documents/2021-09/climate-vulnerability\\_september-2021\\_508.pdf](https://www.epa.gov/system/files/documents/2021-09/climate-vulnerability_september-2021_508.pdf).
87. Taylor EV, Vaidyanathan A, Flanders WD, Murphy M, Spencer M, Noe RS. Differences in heat-related mortality by citizenship status: United States, 2005–2014. *Am J Public Health* 2018; 108: S131–6.
88. Karthick S, Kermanshachi S, Pamidimukkala A. Impact Analysis of Heat on Physical and Mental Health of Construction Workforce. 2022. DOI:10.1061/9780784484340.027.
89. Schwarz L, Castillo EM, Chan TC, *et al.* Heat waves and emergency department visits among the homeless, San Diego, 2012–2019. *Am J Public Health* 2022; 112: 98–106.
90. Kidd SA, Greco S, McKenzie K. Global climate implications for homelessness: A scoping review. *J Urban Health* 2021; 98: 385–93.
91. Skarha J, Peterson M, Rich JD, Dosa D. An overlooked crisis: Extreme temperature exposures in incarceration settings. *Am J Public Health* 2020; 110: S41–2.
92. Jay O, Capon A, Berry P, *et al.* Reducing the health effects of hot weather and heat extremes: From personal cooling strategies to green cities. *The Lancet* 2021; 398: 709–24.
93. Adams Q, Spangler K, Chan E, *et al.* Are cooling centers optimally placed to serve vulnerable populations? An analysis of 77 US Cities. *IEEE Conference Abstracts* 2021; published online Aug 23. DOI:10.1289/isee.2021.P-655.
94. Mallen E. Extreme heat exposure: Access and barriers to cooling centers — Maricopa and Yuma Counties, Arizona, 2010–2020. *MMWR Morb Mortal Wkly Rep* 2022; 71. DOI:10.15585/mmwr.mm7124a1.

95. Foster A, Dunham IM, Bukowska A. An environmental justice analysis of urban tree canopy distribution and change. *Journal of Urban Affairs* 2022; 0: 1–16.
96. Cong S, Nock D, Qiu YL, Xing B. Unveiling hidden energy poverty using the energy equity gap. *Nat Commun* 2022; 13: 2456.
97. Salas RN, Knappenberger P, Hess JJ. The 2021 Lancet Countdown on Health and Climate Change Policy Brief for the United States of America. *Lancet* 2021.
98. Morris NB, English T, Hospers L, Capon A, Jay O. The effects of electric fan use under differing resting heat index conditions: A clinical trial. *Ann Intern Med* 2019; 171: 675–7.
99. Dagher RK, Linares DE. A critical review on the complex interplay between social determinants of health and maternal and infant mortality. *Children* 2022; 9: 394.
100. MacDorman MF, Thoma M, Declercq E, Howell EA. Racial and ethnic disparities in maternal mortality in the United States using enhanced vital records, 2016–2017. *Am J Public Health* 2021; 111: 1673–81.
101. Cushing L, Morello-Frosch R, Hubbard A. Extreme heat and its association with social disparities in the risk of spontaneous preterm birth. *Paediatr Perinat Epidemiol* 2022; 36: 13–22.
102. Qu Y, Zhang W, Ryan I, et al. Ambient extreme heat exposure in summer and transitional months and emergency department visits and hospital admissions due to pregnancy complications. *Science of The Total Environment* 2021; 777: 146134.
103. Graff M, Carley S, Konisky DM, Memmott T. Which households are energy insecure? An empirical analysis of race, housing conditions, and energy burdens in the United States. *Energy Research & Social Science* 2021; 79: 102144.
104. Memmott T, Carley S, Graff M, Konisky DM. Sociodemographic disparities in energy insecurity among low-income households before and during the COVID-19 pandemic. *Nat Energy* 2021; 6: 186–93.
105. Reames TG, Daley DM, Pierce JC. Exploring the nexus of energy burden, social capital, and environmental quality in shaping health in US Counties. *International Journal of Environmental Research and Public Health* 2021; 18: 620.
106. Yarmuth J. Inflation Reduction Act of 2022. 2022 <https://www.congress.gov/bill/117th-congress/house-bill/5376/text>.
107. Mora C, McKenzie T, Gaw IM, et al. Over half of known human pathogenic diseases can be aggravated by climate change. *Nat Clim Chang* 2022; 12: 869–75.
108. Fuller MG, Cavanaugh N, Green S, Duderstadt K. Climate change and state of the science for children's health and environmental health equity. *Journal of Pediatric Health Care* 2022; 36: 20–6.
109. Sheahan M, Gould CA, Neumann JE, et al. Examining the relationship between climate change and vibriosis in the United States: Projected health and economic impacts for the 21st century. *Environmental Health Perspectives*; 130: 087007.
110. Environmental Protection Agency O. Combined Sewer Overflows (CSOs). 2015; published online Oct 13. <https://www.epa.gov/npdes/combined-sewer-overflows-csos>.
111. Wade TJ, Lin CJ, Jagai JS, Hilborn ED. Flooding and emergency room visits for gastrointestinal illness in massachusetts: A case-crossover study. *PLOS ONE* 2014; 9: e110474.
112. Tavakol-Davani H, Goharian E, Hansen CH, Tavakol-Davani H, Apul D, Burian SJ. How does climate change affect combined sewer overflow in a system benefiting from rainwater harvesting systems? *Sustainable Cities and Society* 2016; 27: 430–8.
113. Patz JA, Vavrus SJ, Uejio CK, McLellan SL. Climate change and waterborne disease risk in the Great Lakes Region of the U.S. *American Journal of Preventive Medicine* 2008; 35: 451–8.
114. Walker J. The influence of climate change on waterborne disease and Legionella: A review. *Perspect Public Health* 2018; 138: 282–6.
115. Quist AJL, Fliss MD, Wade TJ, Delamater PL, Richardson DB, Engel LS. Hurricane flooding and acute gastrointestinal illness in North Carolina. *Sci Total Environ* 2022; 809: 151108.
116. Ramesh B, Jagger MA, Zaitchik B, et al. Emergency department visits associated with satellite observed flooding during and following Hurricane Harvey. *J Expo Sci Environ Epidemiol* 2021; 31: 832–41.
117. Environmental Protection Agency. Climate Change Indicators: Lyme Disease. 2022. <https://www.epa.gov/climate-indicators/climate-change-indicators-lyme-disease>.
118. Environmental Protection Agency. Climate Change Indicators: West Nile Virus. 2022. <https://www.epa.gov/climate-indicators/climate-change-indicators-west-nile-virus>.
119. Gamble JL, Balbus J, Berger M, et al. Ch. 9: Populations of Concern. In: The Impacts of Climate Change on Human Health in the United States: A Scientific Assessment. Washington, DC: U.S. Global Change Research Program, 2016: 247–86.
120. Harper SL, Cunsolo A, Clayton S. Including mental health as part of climate change impacts and adaptation assessment: A critical advance in IPCC AR6. *PLOS Climate* 2022; 1: e0000033.
121. Dodgen D, Donato D, Kelly N, et al. Ch. 8: Mental Health and Wellbeing. In: The Impacts of Climate Change on Human Health in the United States: A Scientific Assessment. Washington, DC: U.S. Global Change Research Program, 2016: 247–86.
122. Hickman C, Marks E, Pihkala P, et al. Climate anxiety in children and young people and their beliefs about government responses to climate change: A global survey. *The Lancet Planetary Health* 2021; 5: e863–73.
123. Ma T, Moore J, Cleary A. Climate change impacts on the mental health and wellbeing of young people: A scoping review of risk and protective factors. *Social Science & Medicine* 2022; 301: 114888.
124. Charlson F, Ali S, Benmarhnia T, et al. Climate change and mental health: A scoping review. *International Journal of Environmental Research and Public Health* 2021; 18: 4486.
125. Hrabok M, Delorme A, Agyapong VIO. Threats to mental health and well-being associated with climate change. *Journal of Anxiety Disorders* 2020; 76: 102295.
126. Alexander AC, Ali J, McDevitt-Murphy ME, et al. Racial differences in posttraumatic stress disorder vulnerability following Hurricane Katrina among a sample of adult cigarette smokers from New Orleans. *J Racial and Ethnic Health Disparities* 2017; 4: 94–103.
127. Adepoju OE, Han D, Chae M, et al. Health disparities and climate change: The intersection of three disaster events on vulnerable communities in Houston, Texas. *Int J Environ Res Public Health* 2021; 19: 35.
128. Aylward B, Cunsolo A, Vriezen R, Harper SL. Climate change is impacting mental health in North America: A systematic scoping review of the hazards, exposures, vulnerabilities, risks and responses. *International Review of Psychiatry* 2022; 34: 34–50.
129. Cianconi P, Betrò S, Janiri L. The impact of climate change on mental health: A systematic descriptive review. *Front Psychiatry* 2020; 11: 74.
130. Ebi KL, Vanos J, Baldwin JW, et al. Extreme weather and climate change: Population health and health system implications. *Annual Review of Public Health* 2021; 42: 293–315.
131. Flores AB, Collins TW, Grineski SE, Chakraborty J. Disparities in health effects and access to health care among Houston area residents after Hurricane Harvey. *Public Health Rep* 2020; 135: 511–23.
132. Fong KC, Hart JE, James P. A review of epidemiologic studies on greenness and health: Updated literature through 2017. *Curr Envir Health Rpt* 2018; 5: 77–87.
133. Garfin DR, Thompson RR, Holman EA, Wong-Parodi G, Silver RC. Association between repeated exposure to hurricanes and mental health in a representative sample of Florida residents. *JAMA Network Open* 2022; 5: e2217251.
134. Gislason MK, Kennedy AM, Witham SM. The interplay between social and ecological determinants of mental health for children and youth in the climate crisis. *Int J Environ Res Public Health* 2021; 18: 4573.
135. Grabow M, Bryan T, Checovich M, et al. Mindfulness and climate change action: A feasibility study. *Sustainability* 2018; 10: 1508.
136. James P, Hart JE, Banay RF, Laden F. Exposure to greenness and mortality in a nationwide prospective cohort study of women. *Environ Health Perspect* 2016; 124: 1344–52.
137. Kidd SA, Hajat S, Bezgrebelna M, McKenzie K. The climate change–homelessness nexus. *The Lancet* 2021; 397: 1693–4.
138. Levy BS, Sidel VW, Patz JA. Climate change and collective violence. *Annu Rev Public Health* 2017; 38: 241–57.
139. Mason LR, Sharma BB, Walters JE, Ekenga CC. Mental health and weather extremes in a South-eastern U.S. City: Exploring group differences by race. *Int J Environ Res Public Health* 2020; 17: 3411.
140. Morganstein JC, Ursano RJ. Ecological disasters and mental health: Causes, consequences, and interventions. *Frontiers in Psychiatry* 2020; 11. <https://www.frontiersin.org/articles/10.3389/fpsy.2020.00001>.
141. Nelson MC, Ingram SE, Dugmore AJ, et al. Climate challenges, vulnerabilities, and food security. *Proc Natl Acad Sci U S A* 2016; 113: 298–303.

142. Palinkas LA, O'Donnell ML, Lau W, Wong M. Strategies for delivering mental health services in response to global climate change: A narrative review. *International Journal of Environmental Research and Public Health* 2020; 17: 8562.
143. Schwartz SEO, Benoit L, Clayton S, Parnes MF, Swenson L, Lowe SR. Climate change anxiety and mental health: Environmental activism as buffer. *Curr Psychol* 2022; 1–14.
144. Schwartz RM, Gillezeau CN, Liu B, Lieberman-Cribbin W, Taioli E. Longitudinal impact of Hurricane Sandy exposure on mental health symptoms. *Int J Environ Res Public Health* 2017; 14: 957.
145. Solmi M, Radua J, Olivola M, et al. Age at onset of mental disorders worldwide: Large-scale meta-analysis of 192 epidemiological studies. *Mol Psychiatry* 2022; 27: 281–95.
146. Clayton S, Manning C, Speiser M, Hill AN. Mental health and our changing climate: 2021 edition. Washington, DC: American Psychological Association; ecoAmerica, 2021 <https://ecoamerica.org/wp-content/uploads/2021/11/mental-health-climate-change-2021-ea-apa.pdf>.
147. Policy Statement: Addressing the Impacts of Climate Change on Mental Health and Well-Being. American Public Health Association, 2019 <https://apha.org/Policies-and-Advocacy/Public-Health-Policy-Statements/Policy-Database/2020/01/13/Addressing-the-Impacts-of-Climate-Change-on-Mental-Health-and-Well-Being>.
148. Resource Document on Mental Health and Climate Change. 2017. [https://psychiatry.org/File%20Library/Psychiatrists/Directories/Library-and-Archive/resource\\_documents/2017-Resource-Document-Mental-Health-Climate-Change.pdf](https://psychiatry.org/File%20Library/Psychiatrists/Directories/Library-and-Archive/resource_documents/2017-Resource-Document-Mental-Health-Climate-Change.pdf).
149. Mahajan M, Ashmoore O, Rissman J, Orvis R, Gopal A. Modeling The Inflation Reduction Act Using The Energy Policy Simulator. San Francisco, CA, USA: Energy Innovation Policy and Technology LLC, 2022.
150. Jenkins JD, Mayfield EN, Farbes J, et al. Preliminary Report: The Climate and Energy Impacts of the Inflation Reduction Act of 2022. Princeton, NJ, USA: REPEAT Project, 2022.
151. Pörtner H-O, Roberts DC, Poloczanska E, et al. IPCC, 2022: Summary for policymakers. In: Climate change 2022: Impacts, adaptation, and vulnerability. Contribution of Working Group II to the Sixth Assessment Report of the Intergovernmental Panel on Climate Change. Cambridge University Press, 2022.
152. Stoddard I, Anderson K, Capstick S, et al. Three decades of climate mitigation: why haven't we bent the global emissions curve? *Annual Review of Environment and Resources* 2021; 46: 653–89.
153. West Virginia et al. v. Environmental Protection Agency. 2022 [https://www.supremecourt.gov/opinions/21pdf/20-1530\\_n758.pdf](https://www.supremecourt.gov/opinions/21pdf/20-1530_n758.pdf).
154. de Vivero G, Stockwell C. Climate Action Tracker: To show climate leadership, US 2030 target should be at least 57–63%. The Climate Action Tracker; Climate Analytics; NewClimate Institute, 2021 [https://climateactiontracker.org/documents/846/2021\\_03\\_CAT\\_1.5C-consistent\\_US\\_NDC.pdf](https://climateactiontracker.org/documents/846/2021_03_CAT_1.5C-consistent_US_NDC.pdf).
155. Environmental Protection Agency. Inventory of U.S. Greenhouse Gas Emissions and Sinks: 1990–2020. U.S. Environmental Protection Agency, EPA 430-R-22-003, 2022 <https://www.epa.gov/system/files/documents/2022-04/us-ghg-inventory-2022-main-text.pdf>.
156. The Long-Term Strategy of the United States: Pathways to Net-Zero Greenhouse Gas Emissions by 2050. Washington, DC, USA: United States Department of State and the United States Executive Office of the President, 2021.
157. Levelized Costs of New Generation Resources in the Annual Energy Outlook 2022. U.S. Energy Information Administration, 2022 [https://www.eia.gov/outlooks/aeo/pdf/electricity\\_generation.pdf](https://www.eia.gov/outlooks/aeo/pdf/electricity_generation.pdf).
158. Raifman MA, Choma EF. Disparities in activity and traffic fatalities by race/ethnicity. *American Journal of Preventive Medicine* 2022; 63: 160–7.
159. Parker MEG, Li M, Bouzaghrane MA, et al. Public transit use in the United States in the era of COVID-19: Transit riders' travel behavior in the COVID-19 impact and recovery period. *Transport Policy* 2021; 111: 53–62.
160. Anderson M. Who relies on public transit in the U.S. Pew Research Center. 2016; published online April 7. <https://www.pewresearch.org/fact-tank/2016/04/07/who-relies-on-public-transit-in-the-u-s/>.
161. Borenstein S, Davis LW. The distributional effects of US clean energy tax credits. *Tax Policy and the Economy* 2016; 30: 191–234.
162. Guo S, Kontou E. Disparities and equity issues in electric vehicles rebate allocation. *Energy Policy* 2021; 154: 112291.
163. Carlton GJ, Sultana S. Electric vehicle charging station accessibility and land use clustering: A case study of the Chicago region. *Journal of Urban Mobility* 2022; 2: 100019.
164. Hsu C-W, Fingerma K. Public electric vehicle charger access disparities across race and income in California. *Transport Policy* 2021; 100: 59–67.
165. Senate Democratic Leadership. Inflation Reduction Act of 2022. 2022. <https://www.democrats.senate.gov/inflation-reduction-act-of-2022>.
166. Maizlish N, Rudolph L, Jiang C. Health benefits of strategies for carbon mitigation in US transportation, 2017–2050. *Am J Public Health* 2022; 112: 426–33.
167. Public Transportation In The US: A Driver Of Health And Equity. Health Affairs Health Policy Brief, 2021 doi:10.1377/hpb20210630.810356.
168. Advanced Clean Cars Program. California Air Resources Board. 2022. <https://ww2.arb.ca.gov/our-work/programs/advanced-clean-cars-program>.
169. Shi L, Moser S. Transformative climate adaptation in the United States: Trends and prospects. *Science* 2021; 372. DOI:10.1126/science.abc8054.
170. Jennings V, Reid CE, Fuller CH. Green infrastructure can limit but not solve air pollution injustice. *Nat Commun* 2021; 12: 4681.
171. Frequently Asked Questions (FAQs). U.S. Energy Information Administration (EIA). 2022; published online May 10. <https://www.eia.gov/tools/faqs/faq.php>.
172. Key World Energy Statistics 2021 – Supply. International Energy Agency. <https://www.iea.org/reports/key-world-energy-statistics-2021/supply>.
173. SEI, IISD, ODI, E3G, and UNEP. The Production Gap Report 2021. 2021 [https://productiongap.org/wp-content/uploads/2021/11/PGR2021\\_web\\_rev.pdf](https://productiongap.org/wp-content/uploads/2021/11/PGR2021_web_rev.pdf).
174. International Energy Agency. Coal 2021: Analysis and Forecast to 2024. 2021 <https://iea.blob.core.windows.net/assets/f1d724d4-a753-4336-9f6e-64679fa23bbf/Coal2021.pdf>.
175. Welsby D, Price J, Pye S, Ekins P. Unextractable fossil fuels in a 1.5 °C world. *Nature* 2021; 597: 230–4.
176. Global Registry of Fossil Fuels. Global Registry of Fossil Fuel Emissions and Reserves. <https://fossilfuelregistry.org/>.
177. Bertrand S. Fact Sheet | Proposals to Reduce Fossil Fuel Subsidies (2021). Environmental and Energy Study Institute, 2021 <https://www.eesi.org/papers/view/fact-sheet-proposals-to-reduce-fossil-fuel-subsidies-2021>.
178. Kotchen MJ. The producer benefits of implicit fossil fuel subsidies in the United States. *Proceedings of the National Academy of Sciences* 2021; 118: e2011969118.
179. Achakulwisut P, Erickson P, Koplow D. Effect of subsidies and regulatory exemptions on 2020–2030 oil and gas production and profits in the United States. *Environ Res Lett* 2021; 16: 084023.
180. Erickson P, van Asselt H, Koplow D, et al. Why fossil fuel producer subsidies matter. *Nature* 2020; 578: E1–4.
181. Johnston JE, Chau K, Franklin M, Cushing L. Environmental justice dimensions of oil and gas flaring in South Texas: Disproportionate exposure among Hispanic communities. *Environ Sci Technol* 2020; 54: 6289–98.
182. Lee J, Sorensen C, Lemery J, Workman CF, Linstadt H, Bazilian MD. Managing upstream oil and gas emissions: A public health oriented approach. *Journal of Environmental Management* 2022; 310: 114766.
183. Black KJ, Boslett AJ, Hill EL, Ma L, McCoy SJ. Economic, environmental, and health impacts of the fracking boom. *Annual Review of Resource Economics* 2021; 13: 311–34.
184. Hendryx M, Zullig KJ, Luo J. Impacts of coal use on health. *Annual Review of Public Health* 2020; 41: 397–415.
185. Muttitt G, Kartha S. Equity, climate justice and fossil fuel extraction: Principles for a managed phase out. *Climate Policy* 2020; 20: 1024–42.
186. Koski J, Kartha S, Erickson P. Principles for aligning U.S. fossil fuel extraction with climate limits. Seattle, WA, USA: Stockholm Environment Institute, 2019.
187. Sharifi A, Pathak M, Joshi C, He B-J. A systematic review of the health co-benefits of urban climate change adaptation. *Sustainable Cities and Society* 2021; 74: 103190.
188. Negev M, Zea-Reyes L, Caputo L, Weinmayr G, Potter C, de Nazelle A. Barriers and enablers for integrating public health cobenefits in urban climate policy. *Annu Rev Public Health* 2022; 43: 255–70.

189. Ko J, Schlaerth H, Bruce A, Sanders K, Ban-Weiss G. Measuring the impacts of a real-world neighborhood-scale cool pavement deployment on albedo and temperatures in Los Angeles. *Environ Res Lett* 2022; 17: 044027.
190. Sinha P, Coville RC, Hirabayashi S, Lim B, Endreny TA, Nowak DJ. Variation in estimates of heat-related mortality reduction due to tree cover in U.S. cities. *Journal of Environmental Management* 2022; 301: 113751.
191. Filigrana P, Levy JI, Gauthier J, Batterman S, Adar SD. Health benefits from cleaner vehicles and increased active transportation in Seattle, Washington. *J Expo Sci Environ Epidemiol* 2022; 32: 538–44.
192. Tran M, Brand C. Smart urban mobility for mitigating carbon emissions, reducing health impacts and avoiding environmental damage costs. *Environ Res Lett* 2021; 16: 114023.
193. Schulte LA, Dale BE, Bozzetto S, et al. Meeting global challenges with regenerative agriculture producing food and energy. *Nat Sustain* 2022; 5: 384–8.
194. Shortridge A, Walker VI W, White DD, Guardaro MM, Hondula DM, Vanos JK. HeatReady schools: A novel approach to enhance adaptive capacity to heat through school community experiences, risks, and perceptions. *Climate Risk Management* 2022; 36: 100437.
195. Ross E, Day M, Ivanova C, McLeod A, Lockshin J. Intersections of disadvantaged communities and renewable energy potential: Data set and analysis to inform equitable investment prioritization in the United States. *Renewable Energy Focus* 2022; 41: 1–14.
196. Anderson K, Farthing A, Elgqvist E, Warren A. Looking beyond bill savings to equity in renewable energy microgrid deployment. *Renewable Energy Focus* 2022; 41: 15–32.
197. Klinenberg E, Araos M, Koslov L. Sociology and the climate crisis. *Annual Review of Sociology* 2020; 46: 649–69.
198. Diener A, Mudu P. How can vegetation protect us from air pollution? A critical review on green spaces' mitigation abilities for air-borne particles from a public health perspective- with implications for urban planning. *Science of The Total Environment* 2021; 796: 148605.
199. Jimenez MP, DeVille NV, Elliott EG, et al. Associations between nature exposure and health: A review of the evidence. *International Journal of Environmental Research and Public Health* 2021; 18: 4790.
200. Wong NH, Tan CL, Kolokotsa DD, Takebayashi H. Greenery as a mitigation and adaptation strategy to urban heat. *Nat Rev Earth Environ* 2021; 2: 166–81.
201. Rojas-Rueda D, Nieuwenhuijsen MJ, Gascon M, Perez-Leon D, Mudu P. Green spaces and mortality: A systematic review and meta-analysis of cohort studies. *Lancet Planet Health* 2019; 3: e469–77.
202. Climate and Health Capacity Survey. Association of State and Territorial Health Officials, 2022 <https://www.astho.org/globalassets/report/astho-climate-survey.pdf>.
203. Nik VM, Perera ATD, Chen D. Towards climate resilient urban energy systems: A review. *National Science Review* 2021; 8: nwaa134.
204. Kakran S, Chanana S. Smart operations of smart grids integrated with distributed generation: A review. *Renewable and Sustainable Energy Reviews* 2018; 81: 524–35.
205. Novick KA, Metzger S, Anderegg WRL, et al. Informing nature-based climate solutions for the United States with the best-available science. *Global Change Biology* 2022; 28: 3778–94.
206. Evans DL, Falagán N, Hardman CA, et al. Ecosystem service delivery by urban agriculture and green infrastructure – a systematic review. *Ecosystem Services* 2022; 54: 101405.
207. World Bank. A Catalogue of Nature-Based Solutions for Urban Resilience. Washington, DC: World Bank, 2021 <https://openknowledge.worldbank.org/handle/10986/36507>.
208. Sadeghi M, Chaston T, Hanigan I, et al. The health benefits of greening strategies to cool urban environments – A heat health impact method. *Building and Environment* 2022; 207: 108546.
209. Reyes-Riveros R, Altamirano A, De La Barrera F, Rozas-Vásquez D, Vieli L, Meli P. Linking public urban green spaces and human well-being: A systematic review. *Urban Forestry & Urban Greening* 2021; 61: 127105.
210. Shafique M, Kim R, Rafiq M. Green roof benefits, opportunities and challenges – A review. *Renewable and Sustainable Energy Reviews* 2018; 90: 757–73.
211. Aidun H. Smart Surfaces, Smart Cities: Reducing Heat and Promoting Equity in Urban Areas. New York, NY, USA: Columbia Law School: Sabin Center for Climate Change Law, 2021 <https://climate.law.columbia.edu/content/smart-surfaces-smart-cities-reducing-heat-and-promoting-equity-urban-areas>.
212. Jarrell R, Kats G. Cooling Cities, Slowing Climate Change and Enhancing Equity: Costs and Benefits of Smart Surfaces Adoption for Baltimore. Smart Solutions Coalition [https://static1.squarespace.com/static/5b104d0b365f02ddb7b29576/t/6329dcea7ec0c202e825ebc/1663687919882/Baltimore+Draft+Document9.20.22\\_Reduced.pdf](https://static1.squarespace.com/static/5b104d0b365f02ddb7b29576/t/6329dcea7ec0c202e825ebc/1663687919882/Baltimore+Draft+Document9.20.22_Reduced.pdf).
213. Steiner A, Aguilar G, Bomba K, et al. Actions to transform food systems under climate change. Wageningen, The Netherlands: CGIAR Research Program on Climate Change, Agriculture and Food Security (CCAFS), 2020 <https://ccafs.cgiar.org/resources/publications/actions-transform-food-systems-under-climate-change>.
214. Smith P, Calvin K, Nkem J, et al. Which practices co-deliver food security, climate change mitigation and adaptation, and combat land degradation and desertification? *Global Change Biology* 2020; 26: 1532–75.
215. Davidson K, Briggs J, Nolan E, Bush J, Håkansson I, Moloney S. The making of a climate emergency response: Examining the attributes of climate emergency plans. *Urban Climate* 2020; 33: 100666.
216. Duarte CM, Ferreira JC, Fortes J. Risk modelling in urban coastal areas to support adaptation to climate change and extreme weather events: Early warning, emergency planning and risk management systems. *coas* 2020; 95: 785–9.
217. Raikes J, Smith TF, Jacobson C, Baldwin C. Pre-disaster planning and preparedness for floods and droughts: A systematic review. *International Journal of Disaster Risk Reduction* 2019; 38: 101207.
218. Khan Y, O'Sullivan T, Brown A, et al. Public health emergency preparedness: A framework to promote resilience. *BMC Public Health* 2018; 18: 1344.
219. Guenther R, Balbus J. Primary Protection: Enhancing Health Care Resilience for a Changing Climate. Department of Health and Human Services, 2014 <https://toolkit.climate.gov/topics/human-health/building-climate-resilience-health-sector>.
220. Raifman M, Lambert KF, Levy JI, Kinney PL. Mortality implications of increased active mobility for a proposed regional transportation emission cap-and-invest program. *J Urban Health* 2021; 98: 315–27.
221. Minet L, Wang A, Hatzopoulou M. Health and climate incentives for the deployment of cleaner on-road vehicle technologies. *Environ Sci Technol* 2021; 55: 6602–12.
222. Glazener A, Sanchez K, Ramani T, et al. Fourteen pathways between urban transportation and health: A conceptual model and literature review. *Journal of Transport & Health* 2021; 21: 101070.
223. Nieuwenhuijsen M, Khreis H. Advances in Transportation and Health: Tools, Technologies, Policies, and Developments, 1st edn. Elsevier, 2020 <https://www2.arb.ca.gov/our-work/programs/advanced-clean-cars-program>.
224. Chu EK, Cannon CE. Equity, inclusion, and justice as criteria for decision-making on climate adaptation in cities. *Current Opinion in Environmental Sustainability* 2021; 51: 85–94.
225. Meerow S, Newell JP. Urban resilience for whom, what, when, where, and why? *Urban Geography* 2019; 40: 309–29.
226. Hamilton I, Kennard H, McGushin A, et al. The public health implications of the Paris Agreement: A modelling study. *The Lancet Planetary Health* 2021; 5: e74–83.
227. Callahan CW, Mankin JS. National attribution of historical climate damages. *Climatic Change* 2022; 172: 40.
228. Aggregate Trends of Climate Finance Provided and Mobilised by Developed Countries in 2013–2020. Organisation for Economic Co-operation and Development, 2022 <https://www.oecd.org/climate-change/finance-usd-100-billion-goal/aggregate-trends-of-climate-finance-provided-and-mobilised-by-developed-countries-in-2013-2020.pdf>.
229. Bos J, Thwaites J. A Breakdown of Developed Countries' Climate Finance Contributions Towards the \$100 Billion Goal. Washington, DC, USA: Word Resources Institute, 2021 [https://files.wri.org/d8/s3fs-public/2021-10/breakdown-developed-countries-public-climate-finance-contributions-towards-100-billion.pdf?VersionId=0luvOD5zVLLxfRpWad\\_DyFC3Qh4sjd0](https://files.wri.org/d8/s3fs-public/2021-10/breakdown-developed-countries-public-climate-finance-contributions-towards-100-billion.pdf?VersionId=0luvOD5zVLLxfRpWad_DyFC3Qh4sjd0).
230. President's Emergency Plan for Adaptation and Resilience (PREPARE). Washington, DC, USA. <https://www.whitehouse.gov/wp-content/uploads/2021/10/Full-PREPARE-Plan.pdf>.

# Acknowledgements

U.S. Policy Brief Authors: Naomi S. Beyeler, MPH, MCP\*; Natasha K. DeJarnett, PhD, MPH, BCES\*; Paige K. Lester, MA; Jeremy J. Hess, MD, MPH; Renee N. Salas, MD, MPH, MS.

*\*Signifies co-lead authors in alphabetical order*

**Additional Team Acknowledgements:** *Support, Logistics, & Review:* Luke Testa; Kelly Phouyaphone, MPH; *Infographic Design:* Figure 2- Huck Strategies; Figure 3- Paige K. Lester, MA and Danielle Crockett, BFA; *Appendix, Additional Materials, and Website Design:* Huck Strategies; *Appendix Spanish Translation and Copy Editing:* Juan Aguilera MD, PhD, MPH; Gabriela Haymes; *Copy Editing:* Caroline Anitha Devadason, MPH; Carissa Novak, MScGH; Laura E. Peterson, BSN, SM. Thank you to the Climate and Health Foundation for their generous support.

**Review on Behalf of the Lancet Countdown (alphabetical):** Anthony Costello, FmedSci; Frances MacGuire, PhD, MPH; Marina Romanello, PhD; Maria Walawender, MSPH.

**Review on Behalf of the American Public Health Association (alphabetical):** Gillian Capper, MPH; Katherine Catalano, MS; Evelyn Maldonado; Mary Stortstrom.

**Science and Technical Advisors (alphabetical):** *These science and technical advisors provided technical and review assistance but are not responsible for the content of the report, and this report does not represent the views of their respective federal institutions.* Caitlin A. Gould, DrPH(c), MPPA; Rhonda J. Moore, PhD; Ambarish Vaidyanathan, PhD.

**U.S. Brief Working Group Reviewers of Brief and Appendix (alphabetical):** Ploy Achakulwisut, PhD; Susan Anenberg, PhD; Mona Arora, PhD, MSPH; Madeleine Bartzak, MPH, RN; Jesse E. Bell, PhD; Aaron Bernstein, MD, MPH; Laura Bozzi, PhD; Robert Byron, MD, MPH; Linda D. Cameron, PhD; Gillian Capper, MPH; Amy Collins, MD; Cara Cook, MS, RN, AHN-BC; Tim Cronin; Shelbi Davis, MPH; Michael A. Diefenbach, PhD; Kathleen Dolan, MPH; Caleb Dresser, MD, MPH; Kristie L. Ebi, PhD, MPH; Matthew J. Eckelman, PhD; Donald Edmondson, PhD, MPH; Luis E. Escobar, DVM, MS, PhD; Howard Frumkin, MD, DrPH, MPH; Meghana Gadgil, MD, MPH, FACP; Julia M. Gohlke, PhD; Ilyssa O. Gordon, MD, PhD; Chelsea Gridley-Smith, PhD; Yun Hang, PhD, MS; Adrienne L. Hollis, PhD, JD; Emily Blair Katzin; Philip Landrigan, MD, MSc; Rachel Lookadoo, JD; Melissa Lott, PhD, MS; Edward Maibach, MPH, PhD; Ezra Markowitz, PhD; Leyla Erk McCurdy, MPhil; Anna Miller, MPH; Amruta Nori-Sarma, PhD, MPH; Nick Obradovich, PhD; Lisa Patel, MD, MS; Jonathan Patz, MD, MPH; Ellen Peters, PhD; Rebecca Philipsborn, MD, MPA; Stephen Posner, PhD; Liz Purchia; Heidi Honegger Rogers, DNP, FNP-C, APHN-BC; Caitlin Rublee, MD, MPH; Linda Rudolph, MD, MPH; Mona Sarfaty, MD, MPH; Liz Scott; Emily Senay, MD, MPH; Jodi D. Sherman, MD; Cecilia Sorensen, MD; Sarah Spengeman, PhD; Keri K. Stephens, PhD; Vishnu Laalitha Surapaneni, MD, MPH; J. Jason West, PhD; Skye Wheeler; Kristi E. White, PhD, ABPP; D'Ann L. Williams, DrPH, MS; Carol Ziegler, DNP, NP-C, APHN-BC; Lewis H. Ziska, PhD.

U.S. Policy Brief Infographic Authors (traditional academic authorship or alphabetical):

**Figure 2: The Compounding Effects of Climate Change on Mental Health and Wellness**— Katherine Catalano, MS; Naomi S. Beyeler, MPH, MCP; Shelbi Davis, MPH; Natasha K. DeJarnett, PhD, MPH, BCES; Paige K. Lester, MA; Rhonda J. Moore, PhD; Nick Obradovich, PhD; Heidi Honegger Rogers, DNP, FNP-C, APHN-BC; Luke Testa.

**Figure 3: Strategies to Build Healthy, Equitable, Climate-Resilient Communities** — Paige K. Lester, MA; Naomi S. Beyeler, MPH, MCP; Katherine Catalano, MS; Michael A. Diefenbach, PhD; Kathleen Dolan, MPH; Howard Frumkin, MD, DrPH, MPH; Rachel Lookadoo, JD; Linda Rudolph, MD, MPH; D'Ann L. Williams, DrPH, MS.

U.S. Policy Brief Appendix Authors (traditional academic authorship or alphabetical):

**Health and Climate Impacts of Methane Gas in Buildings**- Laura Bozzi, PhD; Sarah Spengeman, PhD.

**Health Impacts of Pollution Along the Oil and Gas Lifecycle** - Ploy Achakulwisut, PhD; Gillian Capper, MPH; Liz Scott.

**Health Care Sector Role in Emissions Reductions**- Madeleine Bartzak, MPH, RN; Amy Collins, MD; Ilyssa O. Gordon, MD, PhD; Emily Senay, MD, MPH.

**Health and Equity Considerations for Carbon Capture and Storage** - Linda Rudolph, MD, MPH; Naomi S. Beyeler, MPH, MCP; Emily Senay, MD, MPH; Vishnu Laalitha Surapaneni, MD, MPH.

**Climate Change and the U.S. Food System** - Lewis H. Ziska, PhD.

**Appendix Table A: Factors that Shape Climate Change Susceptibility, Exposure, and Adaptation**- Natasha DeJarnett, PhD, MPH, BCES.

**Appendix Table B: Key Fossil Fuel-Related Air Pollution and Health Linkages**- Natasha DeJarnett, PhD, MPH, BCES.

U.S. Policy Brief Additional Material Authors (traditional academic authorship or alphabetical):

**Focus on the Northeast**- Madeleine Bartzak, MPH, RN; Naomi S. Beyeler, MPH, MCP; Tim Cronin; Michael A. Diefenbach, PhD; Caleb Dresser, MD, MPH; Chelsea Gridley-Smith, PhD; Melissa Lott, PhD, MS; Mona Sarfaty, MD, MPH; Emily Senay, MD, MPH; D'Ann L. Williams, DrPH, MS.

**Focus on the Midwest**- Rachel Lookadoo, JD; Jesse E. Bell, PhD; Robert Byron, MD, MPH; Jonathan Patz, MD, MPH.

**Focus on the South**- Carol Ziegler, DNP, NP-C, APHN-BC; Naomi S. Beyeler, MPH, MCP.

**Focus on the West**- Naomi S. Beyeler, MPH, MCP; Robert Byron, MD, MPH; Lisa Patel, MD, MS; Heidi Honegger Rogers, DNP, FNP-C, APHN-BC; Linda Rudolph, MD, MPH.

## Organisations

### THE LANCET COUNTDOWN

The *Lancet* Countdown: Tracking Progress on Health and Climate Change exists to monitor the links between public health and climate change, and the transition from health threat to opportunity. We are a global collaboration of over 300 leading experts from academic institutions and UN agencies across the globe, bringing together climate scientists, engineers, energy specialists, economists, political scientists, public health professionals and doctors.

Each year our findings are published annually in medical journal The Lancet ahead of the UN climate change negotiations. Our data makes clear how climate change is affecting our health, the consequences of delayed action and the health benefits of a robust response.

### THE AMERICAN PUBLIC HEALTH ASSOCIATION

The American Public Health Association (APHA) champions the health of all people and all communities. It strengthens the public health profession, promotes best practices, and shares the latest public health research and information. The APHA is the only organization that influences federal policy, has a nearly 150-year perspective, and brings together members from all fields of public health. In 2018, APHA also launched the Center for Climate, Health and Equity. With a long-standing commitment to climate as a health issue, APHA's Center applies principles of health equity to help shape climate policy, engagement, and action to justly address the needs of all communities regardless of age, geography, race, income, gender and more. APHA is the leading voice on the connection between climate and public health. Learn more at [www.apha.org/climate](http://www.apha.org/climate).

### RECOMMENDED CITATION

Lancet Countdown, 2022: 2022 Lancet Countdown on Health and Climate Change Policy Brief for the United States of America. Beyeler NS\*, DeJarnett NK\*, Lester PK, Hess JJ, Salas RN. Lancet Countdown U.S. Policy Brief, London, United Kingdom, 20 pp.